



FOR VISUALIZATION PURPOSES ONLY

12.15.2023

NEW AG AND HORTICULTURE BUILDING  
DPW22462\_CWIAGH  
COLLEGE OF WESTERN IDAHO AG AND HORTICULTURE

CONSTRUCTION DOCUMENTS

**OWNER**

Idaho Division of Public Works  
502 North 4th Street  
Boise, ID 83720  
208.332.1900

**OWNER'S REPRESENTATIVE**

Core Construction  
777 North 4th St. #101  
Boise, ID 83702  
702.794.0550  
Contact: Josh Turley

**ARCHITECT/ MEP ENGINEER**

Cushing Terrell  
800 West Main Street, Suite 800  
Boise, ID 83702  
208.577.5675  
Contact: Josh Shiverick

**GENERAL CONTRACTOR**

Engineered Structures Inc.  
3330 East Louise Drive #300  
Meridian, ID 83642  
208.362.3040  
Contact: Cory Wiltshire

**CIVIL ENGL/LANDSCAPE ARCH**

The Land Group  
462 E. Shore Drive #100  
Eagle, ID 83616  
208.939.4041  
Contact: Matthew T. Adams

**STRUCTURAL ENGINEER**

Axiom, PLLC  
121 N. 9th St. #401  
Boise, ID 83702  
208.639.4520  
Contact: Brad Geyer

**PROJECT ADDRESS**

CHERRY LANE  
NAMPA, IDAHO 83687

**VICINITY MAP:** *Locator*



**SHEET INDEX**

**0 SERIES SHEETS - OVERALL PROJECT**

GENERAL  
G0-001 COVER SHEET  
G0-101 ACCESSIBILITY DIAGRAMS AND DETAILS

CIVIL  
C0-000 COVER AND NOTES  
C0-100 SITE OVERVIEW  
C0-101 EXISTING CONDITIONS & DEMOLITION PLAN - AREA A  
C0-102 EXISTING CONDITIONS & DEMOLITION PLAN - AREA B  
C0-103 EXISTING CONDITIONS & DEMOLITION PLAN - AREA C  
C0-104 EXISTING CONDITIONS & DEMOLITION PLAN - AREA D  
C0-105 EXISTING CONDITIONS & DEMOLITION PLAN - AREA E  
C0-201 SITE PLAN - AREA A  
C0-202 SITE PLAN - AREA B  
C0-203 SITE PLAN - AREA C  
C0-204 SITE PLAN - AREA D  
C0-205 SITE PLAN - AREA E  
C0-211 LAYOUT PLAN - AREA A  
C0-212 LAYOUT PLAN - AREA B  
C0-213 LAYOUT PLAN - AREA C  
C0-214 LAYOUT PLAN - AREA D  
C0-215 LAYOUT PLAN - AREA E  
C0-250 SITE DETAILS  
C0-251 SITE DETAILS  
C0-301 CHERRY LANE - STA 2+40 - STA 14+50  
C0-302 CHERRY LANE - STA 14+60 - STA 20+60  
C0-303 STREET B - STA 2+00 TO 7+00  
C0-304 STREET B - STA 7+00 TO 13+00  
C0-305 STREET B - STA 13+00 TO 16+68.36  
C0-350 LIGHT DUTY BRIDGE PLAN  
C0-360 ROADWAY SECTIONS  
C0-401 GRADING & DRAINAGE PLAN - AREA 1  
C0-402 GRADING & DRAINAGE PLAN - AREA 2  
C0-403 GRADING & DRAINAGE PLAN - AREA 3  
C0-404 GRADING & DRAINAGE PLAN - AREA 4  
C0-405 GRADING & DRAINAGE PLAN - AREA 5  
C0-406 GRADING & DRAINAGE ENLARGEMENTS  
C0-407 GRADING & DRAINAGE ENLARGEMENTS  
C0-450 DRAINAGE DETAILS  
C0-503 UTILITY PLAN - AREA 3  
C0-504 UTILITY PLAN - AREA 4  
C0-505 UTILITY PLAN - AREA 5  
C0-550 SEWER PLAN - STA 15+60 - 21+80  
C0-551 SEWER PLAN - STA 21+60 - 27+40  
C0-552 SEWER PLAN - STA 27+20 - 32+40  
C0-560 UTILITY DETAILS  
C0-600 GIRR PLAN - STA 9+60 - 15+20  
C0-601 GIRR PLAN - STA 15+60 - 20+40  
C0-602 GIRR PLAN - STA 19+60 - 23+80

**1 SERIES SHEETS - ACADEMIC BUILDING**

GENERAL  
G1-100 CODE PLANS  
G1-200 ASSEMBLIES, ABBREVIATIONS  
G1-300 COMCHECK  
STRUCTURAL  
S1-100 CLASSROOM FOUNDATION PLAN  
S1-110 CLASSROOM FRAMING PLANS  
S1-111 GANTRY FRAMING PLANS

ARCHITECTURAL  
A1-100 OVERALL FLOOR PLAN  
A1-101 FLOOR PLAN - AREA A  
A1-102 FLOOR PLAN - AREA B & C  
A1-111 ROOF PLAN - AREA A  
A1-112 ROOF PLAN - AREA B & C  
A1-201 EXTERIOR ELEVATIONS  
A1-202 EXTERIOR ELEVATIONS  
A1-301 BUILDING SECTIONS  
A1-302 BUILDING SECTIONS  
A1-311 WALL SECTIONS  
A1-312 WALL SECTIONS  
A1-321 SECTION DETAILS & ROOF DETAILS  
A1-322 SECTION DETAILS & ROOF DETAILS  
A1-501 FINISH PLAN - AREA A  
A1-502 FINISH PLAN - AREA B  
A1-601 DOOR AND WINDOW SCHEDULES AND DETAILS  
A1-602 DOOR AND WINDOW DETAILS  
A1-701 ENLARGED PLANS / INTERIOR ELEVATIONS  
A1-801 INTERIOR ELEVATIONS / CASEWORK DETAILS  
A1-802 INTERIOR ELEVATIONS / CASEWORK DETAILS  
A1-901 REFLECTED CEILING PLAN AND DETAILS - AREA A  
A1-902 REFLECTED CEILING PLAN AND DETAILS - AREA B & C

PLUMBING  
P1-100 OVERALL DWV PLAN  
P1-101 DWV PLANS - AREA A  
P1-102 DWV PLANS - AREA B  
P1-201 PLUMBING PLANS - AREA A  
P1-202 PLUMBING PLANS - AREA B  
P1-301 MECHANICAL ATTIC PLANS  
P1-302 ENLARGED PLUMBING PLANS

MECHANICAL  
M1-101 HVAC PLAN - AREA A  
M1-102 HVAC PLAN - AREA B  
M1-201 REFRIGERANT PIPING PLAN - AREA A  
M1-202 REFRIGERANT PIPING PLAN - AREA B  
M1-301 MECHANICAL ATTIC PLANS  
M1-502 ISOMETRIC HVAC PLAN - AREA A  
M1-503 ISOMETRIC HVAC PLAN - AREA B

ELECTRICAL  
E1-001 ELECTRICAL LEGENDS  
E1-002 ONE-LINE DIAGRAM  
E1-003 PANEL SCHEDULES  
E1-004 LIGHTING SCHEDULES  
E1-005 ELECTRICAL DETAILS  
E1-100 ELECTRICAL SITE PLAN  
E1-101 ELECTRICAL SITE PLAN  
E1-201 LIGHTING PLANS - AREA A  
E1-202 LIGHTING PLANS - AREA B  
E1-301 POWER PLAN - AREA A  
E1-302 POWER PLAN - AREA B  
E1-303 MECHANICAL POWER PLAN - AREA A  
E1-304 MECHANICAL POWER PLAN - AREA B  
E1-401 SPECIAL SYSTEMS PLAN - AREA A  
E1-402 SPECIAL SYSTEMS PLAN - AREA B

ARCHITECTURAL  
A30-100 ARCHITECTURAL SITE PLAN  
A30-101 ARCHITECTURAL SITE PLAN DETAILS

PLUMBING  
P0-001 PLUMBING SCHEDULES AND LEGENDS  
P0-401 DETAILS

**2 SERIES SHEETS - SHOP BUILDING**

GENERAL  
G2-100 CODE PLAN  
G2-200 ASSEMBLIES  
G2-300 COMCHECK  
STRUCTURAL  
S2-100 SHOP FOUNDATION PLAN

ARCHITECTURAL  
A2-101 FLOOR PLAN & PLAN DETAILS  
A2-111 ROOF PLAN  
A2-201 EXTERIOR ELEVATIONS  
A2-301 BUILDING SECTIONS AND WALL SECTIONS  
A2-302 SECTION DETAILS  
A2-501 FINISH PLANS, SCHEDULES & DETAILS  
A2-601 DOOR AND WINDOW SCHEDULES AND DETAILS  
A2-701 ENLARGED PLANS / INTERIOR ELEVATIONS  
A2-901 REFLECTED CEILING PLAN AND DETAILS

PLUMBING  
P2-101 DWV PLANS  
P2-201 PLUMBING PLANS

MECHANICAL  
M2-101 HVAC PLAN

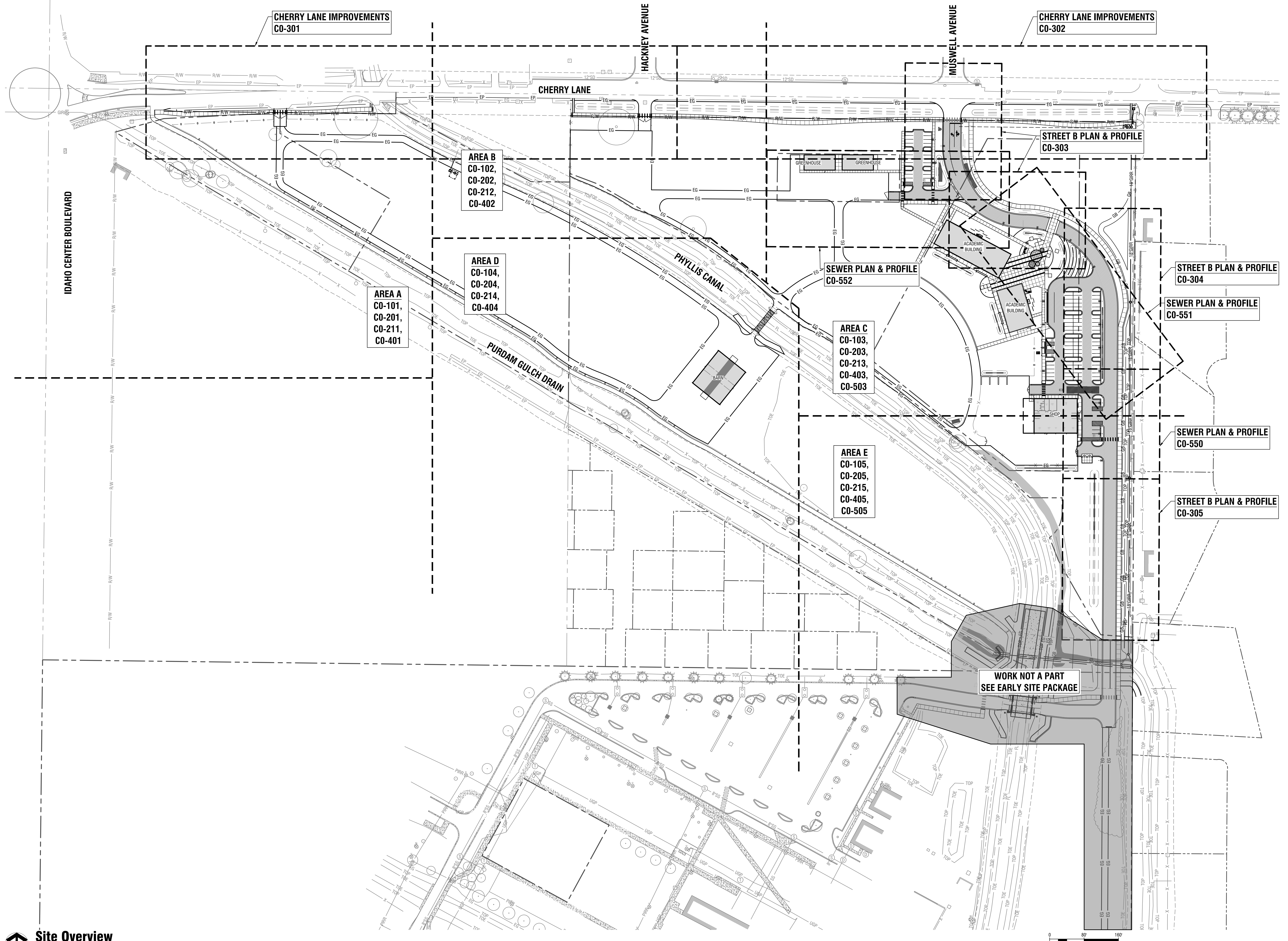
ELECTRICAL  
E2-001 ELECTRICAL LEGENDS  
E2-002 ONE-LINE DIAGRAM AND ELECTRICAL SCHEDULES  
E2-100 ELECTRICAL SITE PLAN  
E2-201 LIGHTING PLAN  
E2-301 POWER PLAN  
E2-401 SPECIAL SYSTEMS PLAN

**3 SERIES SHEETS - BARN**

GENERAL  
G3-100 CODE PLAN  
G3-200 ASSEMBLIES  
STRUCTURAL  
S3-100 BARN FOUNDATION PLAN  
ARCHITECTURAL  
A3-100 SLAB PLAN  
A3-101 FLOOR PLAN & PLAN DETAILS  
A3-111 ROOF PLAN  
A3-201 EXTERIOR ELEVATIONS  
A3-301 BUILDING SECTIONS, WALL SECTIONS, SECTION DETAILS & ROOF DETAILS  
A3-601 DOOR AND WINDOW SCHEDULES AND DETAILS  
A3-901 REFLECTED CEILING PLAN AND DETAILS  
PLUMBING  
P3-201 PLUMBING PLAN  
ELECTRICAL  
E3-001 ELECTRICAL LEGENDS  
E3-002 ONE-LINE DIAGRAM AND ELECTRICAL SCHEDULES  
E3-100 ELECTRICAL SITE PLAN  
E3-201 LIGHTING PLAN  
E3-301 POWER & SPECIAL SYSTEMS PLAN

**4 SERIES SHEETS - GREENHOUSES**

S4-100 GREENHOUSE FOUNDATION PLAN



IDAHO CENTER BOULEVARD

CHERRY LANE IMPROVEMENTS  
CO-301

CHERRY LANE IMPROVEMENTS  
CO-302

AREA B  
CO-102,  
CO-202,  
CO-212,  
CO-402

AREA D  
CO-104,  
CO-204,  
CO-214,  
CO-404

AREA A  
CO-101,  
CO-201,  
CO-211,  
CO-401

SEWER PLAN & PROFILE  
CO-552

AREA C  
CO-103,  
CO-203,  
CO-213,  
CO-403,  
CO-503

AREA E  
CO-105,  
CO-205,  
CO-215,  
CO-405,  
CO-505

STREET B PLAN & PROFILE  
CO-303

STREET B PLAN & PROFILE  
CO-304

SEWER PLAN & PROFILE  
CO-551

SEWER PLAN & PROFILE  
CO-550

STREET B PLAN & PROFILE  
CO-305

WORK NOT A PART  
SEE EARLY SITE PACKAGE

GENERAL NOTES - SITE

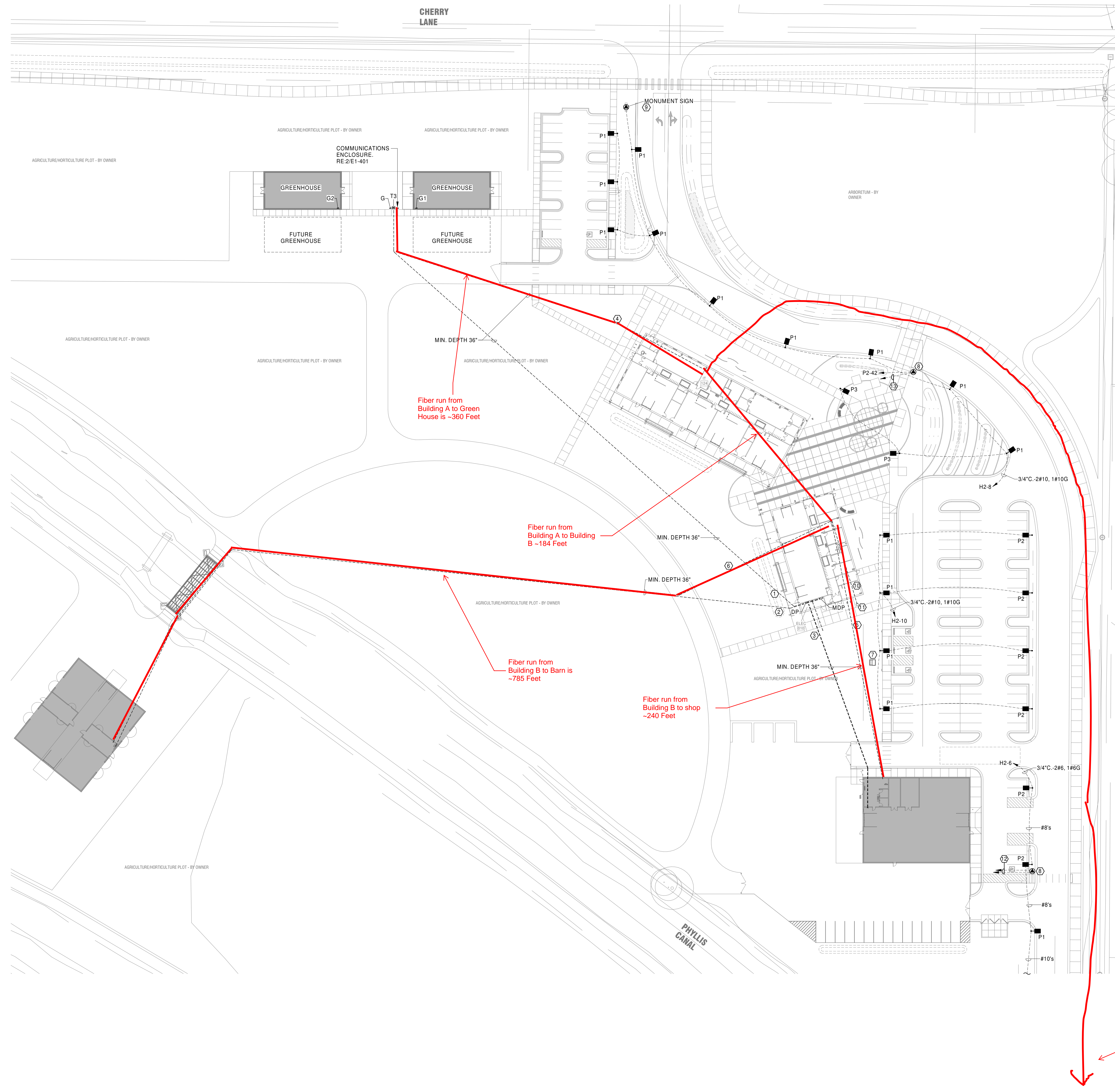
- A. COMPLY WITH LATEST ADOPTED NEC AND APPLICABLE CODES/STANDARDS.
- B. SHARED NEUTRALS ARE NOT ALLOWED FOR SINGLE PHASE BRANCH CIRCUITS.
- C. ALL SITE CONDUITS TO BE 3/4" MINIMUM.
- D. ALL SITE CONDUITS TO BE FURNISHED WITH PULLCORDS.
- E. ALL SITE CONDUCTORS TO BE #10 CU MINIMUM.

KEYNOTES

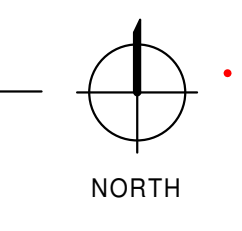
1. CONDUIT FOR GREENHOUSE POWER STUBBED OUT 20'-0" FROM BUILDING FOR EXTENSION IN SEPARATE BUILDING PERMIT. COMPLETE ROUTING SHOWN FOR INFORMATIONAL PURPOSES ONLY. SEE ONE-LINE DIAGRAM FOR ADDITIONAL INFORMATION.
2. CONDUIT FOR BARN POWER STUBBED OUT 20'-0" FROM BUILDING FOR EXTENSION IN SEPARATE BUILDING PERMIT. COMPLETE ROUTING SHOWN FOR INFORMATIONAL PURPOSES ONLY. SEE ONE-LINE DIAGRAM FOR ADDITIONAL INFORMATION.
3. CONDUIT FOR SHOP POWER STUBBED OUT 20'-0" FROM BUILDING FOR EXTENSION IN SEPARATE BUILDING PERMIT. COMPLETE ROUTING SHOWN FOR INFORMATIONAL PURPOSES ONLY. SEE ONE-LINE DIAGRAM FOR ADDITIONAL INFORMATION.
4. 2" COMMUNICATION CONDUIT FOR GREENHOUSE STUBBED OUT 20'-0" FROM BUILDING FOR EXTENSION IN SEPARATE BUILDING PERMIT. COMPLETE ROUTING SHOWN FOR INFORMATIONAL PURPOSES ONLY. SEE FIBER OPTIC RISER DIAGRAM FOR ADDITIONAL INFORMATION.
5. 2" COMMUNICATION CONDUIT FOR SHOP STUBBED OUT 20'-0" FROM BUILDING FOR EXTENSION IN SEPARATE BUILDING PERMIT. COMPLETE ROUTING SHOWN FOR INFORMATIONAL PURPOSES ONLY. SEE FIBER OPTIC RISER DIAGRAM FOR ADDITIONAL INFORMATION.
6. 2" COMMUNICATION CONDUIT FOR BARN STUBBED OUT 20'-0" FROM BUILDING FOR EXTENSION IN SEPARATE BUILDING PERMIT. COMPLETE ROUTING SHOWN FOR INFORMATIONAL PURPOSES ONLY. SEE FIBER OPTIC RISER DIAGRAM FOR ADDITIONAL INFORMATION.
7. UTILITY TRANSFORMER.
8. EMERGENCY PHONE TOWER, TALKPHONE ETP-MTR OR APPROVED EQUAL, COORDINATE SPECIFICATION WITH OWNER PRIOR TO ORDERING. PROVIDE CONCRETE FOUNDATION PER INSTALLATION INSTRUCTIONS.
9. PROVIDE ACUITY BRANDS (SBOR 10 NA G2) FIXTURE MOUNTED SENSOR FOR MONUMENT SIGN CONTROL. CONNECT PER MANUFACTURERS INSTALLATION DIAGRAM.
10. 2" COMMUNICATION SERVICE CONDUIT. SEE FIBER OPTIC RISER DIAGRAM FOR ADDITIONAL INFORMATION.
11. 24"x24"x24" POLYMER QUARTZITE PULLBOX WITH LID FOR COMMUNICATION SERVICE.
12. 3/4"C-2#10, 1#10G TO SPARE 20A-1P BREAKER IN PANEL 'S' AND 3/4" EMPTY CONDUIT TO 'TTB' IN SHOP BUILDING.
13. 3/4" EMPTY CONDUIT TO 'TTB' IN IT 124.

#10 & 11 - Pull box and conduit terminates in Bldg A and not Bldg B.

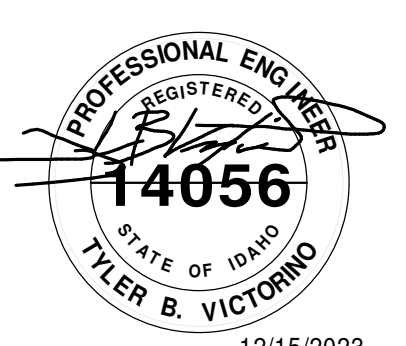
#13 - 3 - OSP Copper cables to ePhone location.



1 ELECTRICAL SITE PLAN  
E1-100 1" = 40'-0"



NEW AG AND HORTICULTURE BUILDING  
DPW22462\_CWIAGH  
COLLEGE OF WESTERN IDAHO AG AND HORTICULTURE



12/15/2023  
© 2023 | ALL RIGHTS RESERVED  
CONSTRUCTION DOCUMENTS  
12.15.2023  
PROJ.# DPW22462\_CWIAGH  
DESIGNED BY | BURFEND  
DRAWN BY | BURFEND  
REVIEWED BY | VICTORINO  
REVISIONS

GENERAL NOTES - SITE

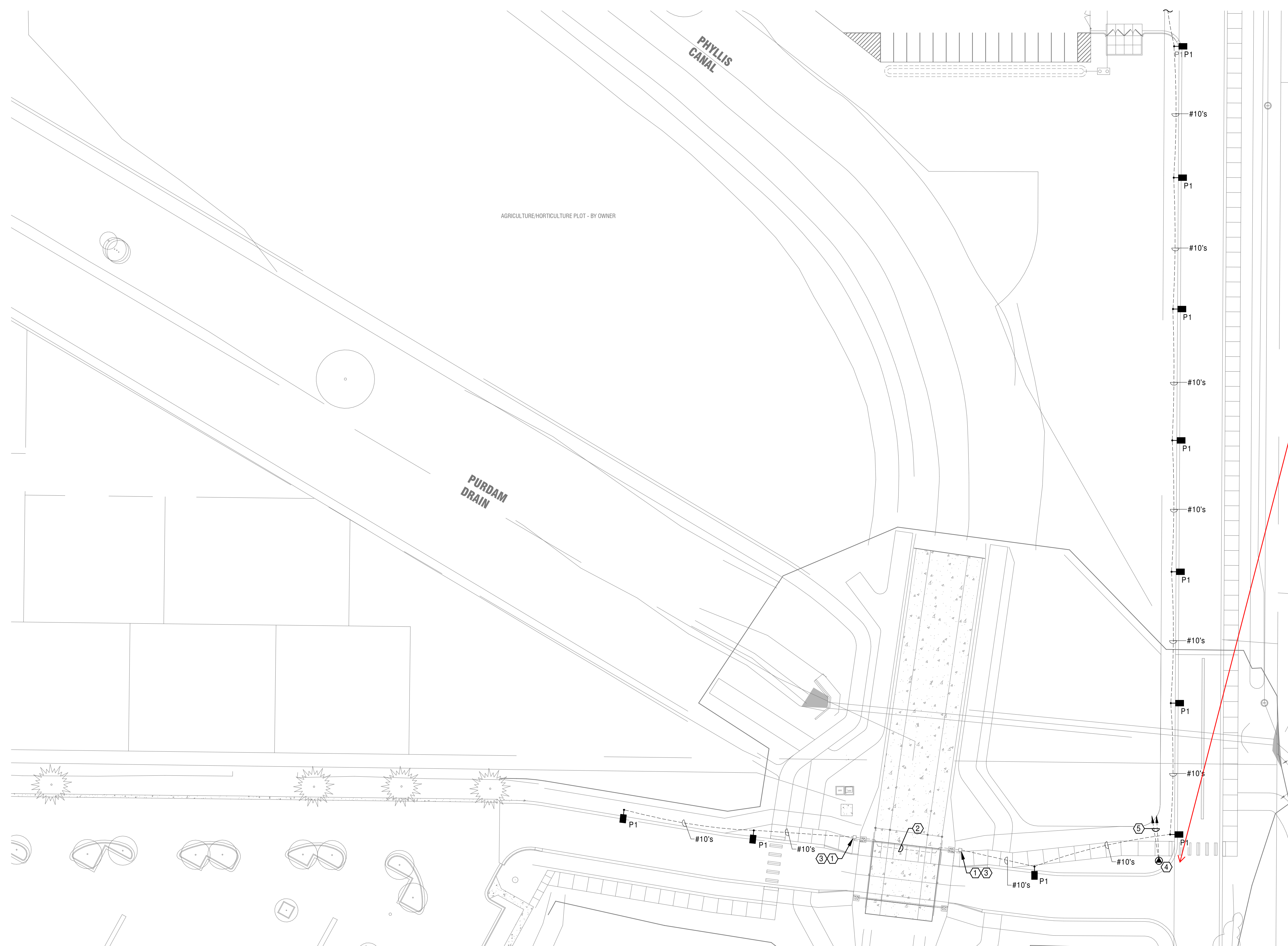
- A. COMPLY WITH LATEST ADOPTED NEC AND APPLICABLE CODES/STANDARDS.
- B. SHARED NEUTRALS ARE NOT ALLOWED FOR SINGLE PHASE BRANCH CIRCUITS.
- C. ALL SITE CONDUITS TO BE 3/4" MINIMUM.
- D. ALL SITE CONDUITS TO BE FURNISHED WITH PULLCORDS.
- E. ALL SITE CONDUCTORS TO BE #10 CU MINIMUM.

KEYNOTES

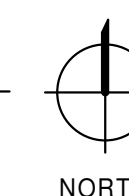
- 1. EXISTING PULLBOX, INSTALLED IN EARLY SITE PACKAGE.
- 2. EXISTING (1)3/4" AND (2)4" CONDUITS, INSTALLED IN EARLY SITE PACKAGE.
- 3. CONNECT TO EXISTING LIGHT FIXTURES INSTALLED IN EARLY SITE PACKAGE.
- 4. EMERGENCY PHONE TOWER, TALKPHONE ETP-MT/R OR APPROVED EQUAL COORDINATE SPECIFICATION WITH OWNER PRIOR TO ORDERING. PROVIDE CONCRETE FOUNDATION PER INSTALLATION INSTRUCTIONS.
- 5. 3/4"C-2#10, 1#10G TO SPARE 20A-1P BREAKER IN PANEL 'S' AND 3/4" EMPTY CONDUIT TO 'TTB' IN SHOP BUILDING.

#4 and #5 - 12 Strang  
Fiber pulled back to  
Shop Telco for  
emergency Phone -  
850 feet

The emergency  
phone may not be in  
place for the fiber to  
connect, so it will  
have to be coiled and  
connected at a later  
date.



1 ELECTRICAL SITE PLAN  
E1-101 1" = 40'-0"



NEW AG AND HORTICULTURE BUILDING  
 DPW22462\_CWIAGH  
**COLLEGE OF WESTERN IDAHO AG AND HORTICULTURE**



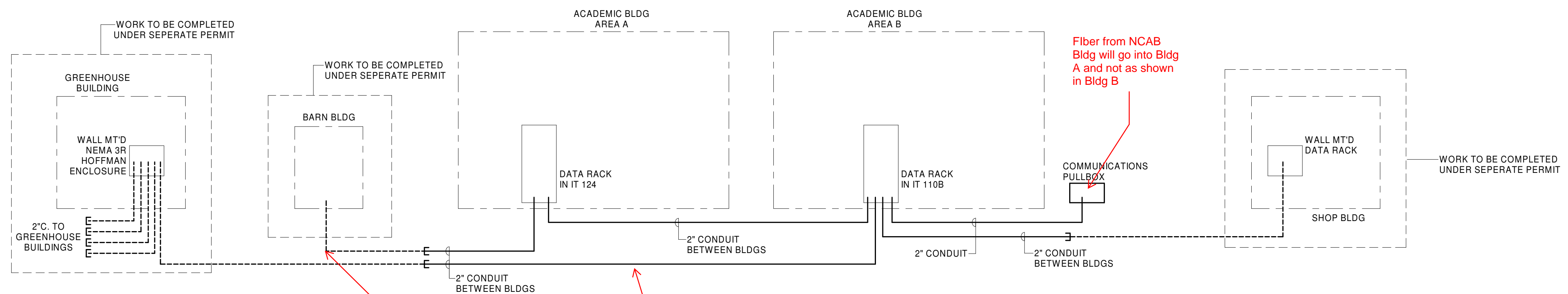
© 2023 | ALL RIGHTS RESERVED

CONSTRUCTION DOCUMENTS

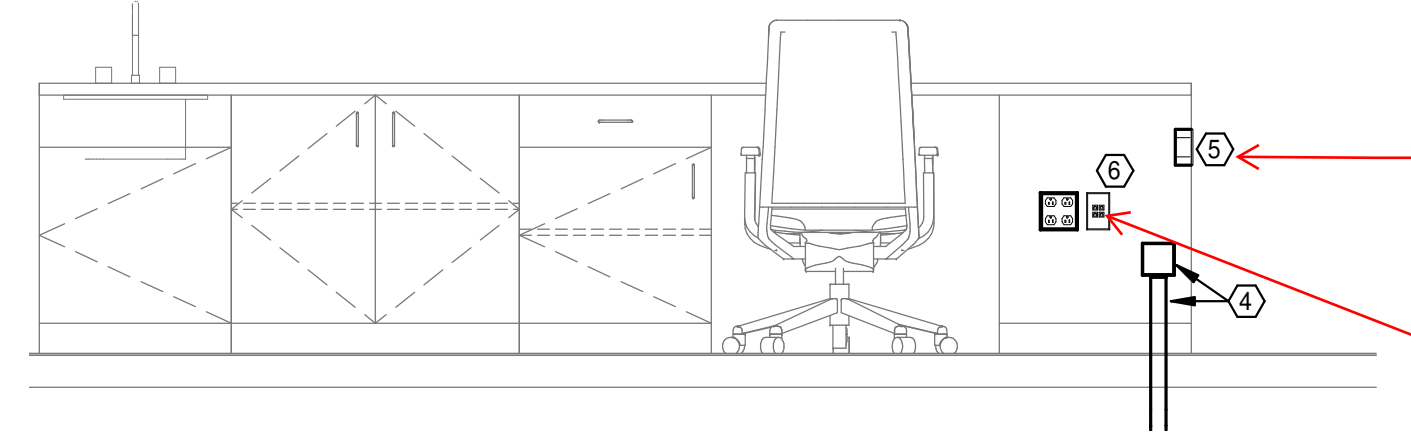
12.15.2023  
 PROJ# | DPW22462\_CWIAGH  
 DESIGNED BY | BURFEND  
 DRAWN BY | BURFEND  
 REVIEWED BY | VICTORINO  
 REVISIONS

ELECTRICAL SITE PLAN

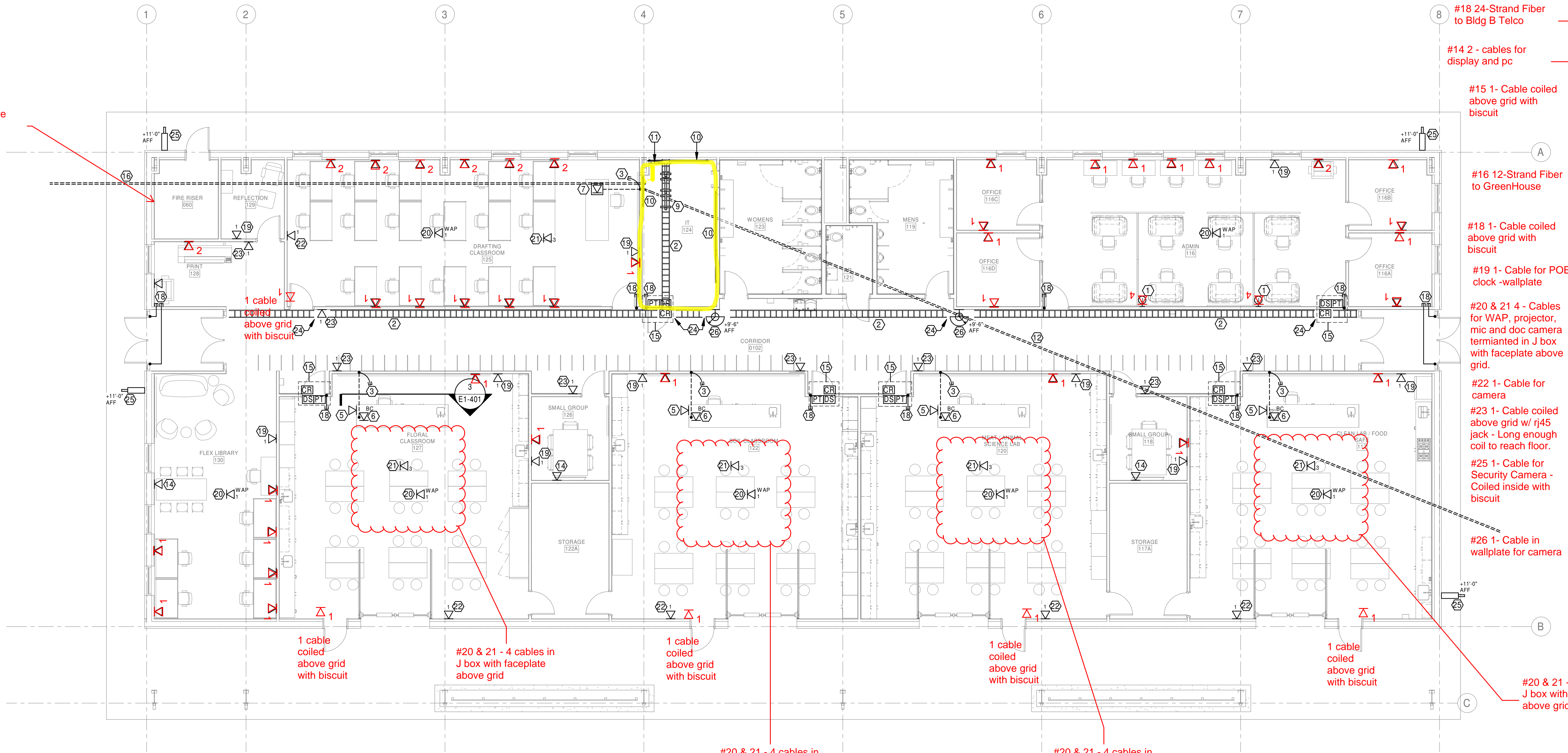
E1-101



2 FIBER OPTIC RISER DIAGRAM  
E1-401 NOT TO SCALE



3 CLASSROOM TEACHER'S DESK SECTION  
E1-401 1/2" = 1'-0"



1 SPECIAL SYSTEMS PLAN - AREA A  
E1-401 1/8" = 1'-0"

GENERAL NOTES - SYSTEMS

- A. COMPLY WITH LATEST ADOPTED NEC, NFPA 72 AND LATEST ADOPTED IBC/IFC.
- B. COORDINATE WALL MOUNTED DEVICE LOCATIONS WITH ARCHITECTURAL ELEVATIONS PRIOR TO ROUGH-IN.
- C. SEAL ALL PENETRATIONS OF RATED WALLS PER SPECIFICATIONS. SEE ARCHITECTURAL DRAWINGS FOR WALL RATINGS.
- D. ALL DATA DEVICES SHALL HAVE A 4"SQ. 2-1/8" DEEP BOX, 1-GANG MUDRING WITH 1" CONDUIT STUBBED ABOVE ACCESSIBLE CEILING SPACE, UNLESS NOTED OTHERWISE. ALL CONDUITS SHALL HAVE INSULATED THROAT BUSHINGS.
- E. PROVIDE PULLCORDS IN ALL DATA CONDUITS.
- F. ALL DATA CABLES, DEVICES AND COVER PLATES TO BE FURNISHED AND INSTALLED BY OWNER'S LOW VOLTAGE CONTRACTOR.
- G. ALL DATA DEVICES TO HAVE 2 CAT 6 CABLES PER DEVICE UNLESS NOTED OTHERWISE.
- H. PROVIDE AND INSTALL SOUND ISOLATION PADS FOR ALL JUNCTION BOXES LOCATED IN ACOUSTIC WALLS. REFER TO DETAILS ON ARCHITECTURAL DRAWINGS FOR REQUIREMENTS AND LOCATIONS.
- I. REFER TO DETAILS ON ARCHITECTURAL DRAWINGS FOR SEALING REQUIREMENTS FOR ACOUSTICS WALL AND FLOOR/CEILING PENETRATIONS.

G. All data locations will be a single cable unless otherwise noted.

FIRE ALARM SYSTEM IS A DELEGATED DESIGN SUBMITTAL BY THE FIRE ALARM CONTRACTOR.

KEYNOTES

- 1. PROVIDE A 4"SQ. 2-1/8" DEEP BOX, SINGLE-GANG MUDRING AND COVER PLATE WITH 1-1/2" CONDUIT STUBBED TO ACCESSIBLE CEILING SPACE, CONDUIT SHALL HAVE INSULATED THROAT BUSHINGS AND PULLCORD.
- 2. 12"X4" WIRE BASKET CABLE TRAY, BOTTOM MOUNTED AT 10" AFF. PROVIDE ALL HARDWARE FOR WALL MOUNTING AND CEILING SUPPORT TRAPEZE FOR SECTIONS NOT ON WALL.
- 3. 1-1/2" CONDUIT STUBBED ABOVE ACCESSIBLE CEILING WITH PULLCORD AND INSULATED THROAT BUSHINGS.
- 4. 4"SQ. X 2-1/8" D. JUNCTION BOX WITH 1-1/2" CONDUIT TO ABOVE ACCESSIBLE CEILING. JUNCTION BOX MOUNTED IN CASEWORK FOR DATA CABLING. SEE DETAIL 3.
- 5. DATA JACK, MOUNTED HORIZONTALLY IN SIDE OF CASEWORK AT +28" AFF.
- 6. DATA JACK, MOUNTED IN LAB TEACHER'S DESK. SEE DETAIL 3.
- 7. FLOOR BOX. SEE E1-301 FOR ADDITIONAL INFORMATION.
- 8. TV BOX AT +72" AFF. SEE E1-301 FOR ADDITIONAL INFORMATION. PROVIDE 1" CONDUIT WITH PULLCORD AND INSULATED THROAT BUSHINGS TO ABOVE ACCESSIBLE CEILING SPACE.
- 9. DATA RACKS AND EQUIPMENT, PROVIDED AND INSTALLED BY OWNER'S LOW VOLTAGE CONTRACTOR.
- 10. PROVIDE 8H X 3/4" FIRE-RATED PLYWOOD TELECOM BACKBOARD. SEE SPECIFICATIONS FOR ADDITIONAL INFORMATION.
- 11. TELECOMMUNICATIONS GROUND BAR. SEE SPECIFICATIONS FOR ADDITIONAL INFORMATION. PROVIDE #6CU GROUND IN 1/2" C. TO MAIN SERVICE GROUND BAR. COORDINATE LOCATION WITH OWNER'S LOW VOLTAGE CONTRACTOR.
- 12. 2" CONDUIT WITH FIBER OPTIC CABLE BETWEEN BUILDINGS FOR FIBER INTERCONNECTION. ROUTE CONDUIT TO DATA RACK IN AREA 'B' IT ROOM. SEE RISER DETAIL 2/E1-401 FOR ADDITIONAL INFORMATION.
- 13. NOTE NOT USED.
- 14. TV BOX AT +72" AFF AND JUNCTION BOX AT +18" AFF BELOW WITH 1" CONDUIT CONNECTING BOTH. SEE E1-301 FOR ADDITIONAL INFORMATION. PROVIDE 1" CONDUIT WITH PULLCORD AND INSULATED THROAT BUSHINGS TO ABOVE ACCESSIBLE CEILING SPACE.
- 15. ACCESS CONTROL EQUIPMENT PROVIDED AND INSTALLED BY OTHERS. ELECTRICAL TO PROVIDE AND INSTALL CONDUIT AND JUNCTION BOXES. COORDINATE CONDUIT AND JUNCTION BOX LOCATIONS WITH ACCESS CONTROL INSTALLER PRIOR TO ROUGH-IN.
- 16. 2" CONDUIT WITH FIBER OPTIC CABLE BETWEEN BUILDINGS FOR FIBER INTERCONNECTION STUBBED OUT 20'-0" FROM ACADEMIC BUILDING. ROUTE CONDUIT TO NEMA 3R HOFFMAN ENCLOSURE AT GREENHOUSE BUILDING. SEE RISER DETAIL 2/E1-401 FOR ADDITIONAL INFORMATION.
- 17. NOTE NOT USED.
- 18. 3/4" EMPTY CONDUIT WITH INSULATED THROAT BUSHINGS FROM CENTER HINGE TO ABOVE ACCESSIBLE CEILING SPACE FOR ACCESS CONTROL WIRING.
- 19. POE CLOCK AT +96" AFF. EQUIPMENT AND CABLING BY OTHERS.
- 20. WIRELESS ACCESS POINT, ABOVE CEILING, EQUIPMENT AND CABLING BY OTHERS.
- 21. CEILING PROJECTOR LOCATION, EQUIPMENT AND CABLING BY OTHERS LOCATED ABOVE CEILING.
- 22. CAMERA LOCATION AT +92" AFF. EQUIPMENT AND CABLING BY OTHERS.
- 23. ROOM SCHEDULER AT +42" AFF. PROVIDE 2-GANG JUNCTION BOX WITH 1/2" EMPTY CONDUIT WITH INSULATED THROAT BUSHINGS TO ABOVE ACCESSIBLE CEILING SPACE.
- 24. THIS PORTION OF CABLE TRAY NOT SHOWN FOR CLARITY.
- 25. EXTERIOR CAMERA, PROVIDED AND INSTALLED BY OTHERS. PROVIDE WP JUNCTION BOX AND 1/2" C. INTO BUILDING TO ABOVE ACCESSIBLE CEILING SPACE. COORDINATE LOCATION, HEIGHT AND ROUGH-IN REQUIREMENTS WITH OWNER PRIOR TO ROUGH-IN.
- 26. INTERIOR CAMERA, PROVIDED AND INSTALLED BY OTHERS. PROVIDE JUNCTION BOX AND 1/2" C. TO ABOVE ACCESSIBLE CEILING SPACE. COORDINATE LOCATION, HEIGHT AND ROUGH-IN REQUIREMENTS WITH OWNER PRIOR TO ROUGH-IN.

NEW AG AND HORTICULTURE BUILDING  
DPW22462\_CWIAGH  
COLLEGE OF WESTERN IDAHO AG AND HORTICULTURE



12/15/2023  
© 2023 | ALL RIGHTS RESERVED

CONSTRUCTION DOCUMENTS

12.15.2023  
PROJ.# | DPW22462\_CWIAGH  
DESIGNED BY | BURFEND  
DRAWN BY | BURFEND  
REVIEWED BY | VICTORINO  
REVISIONS

SPECIAL SYSTEMS PLAN - AREA A

E1-401

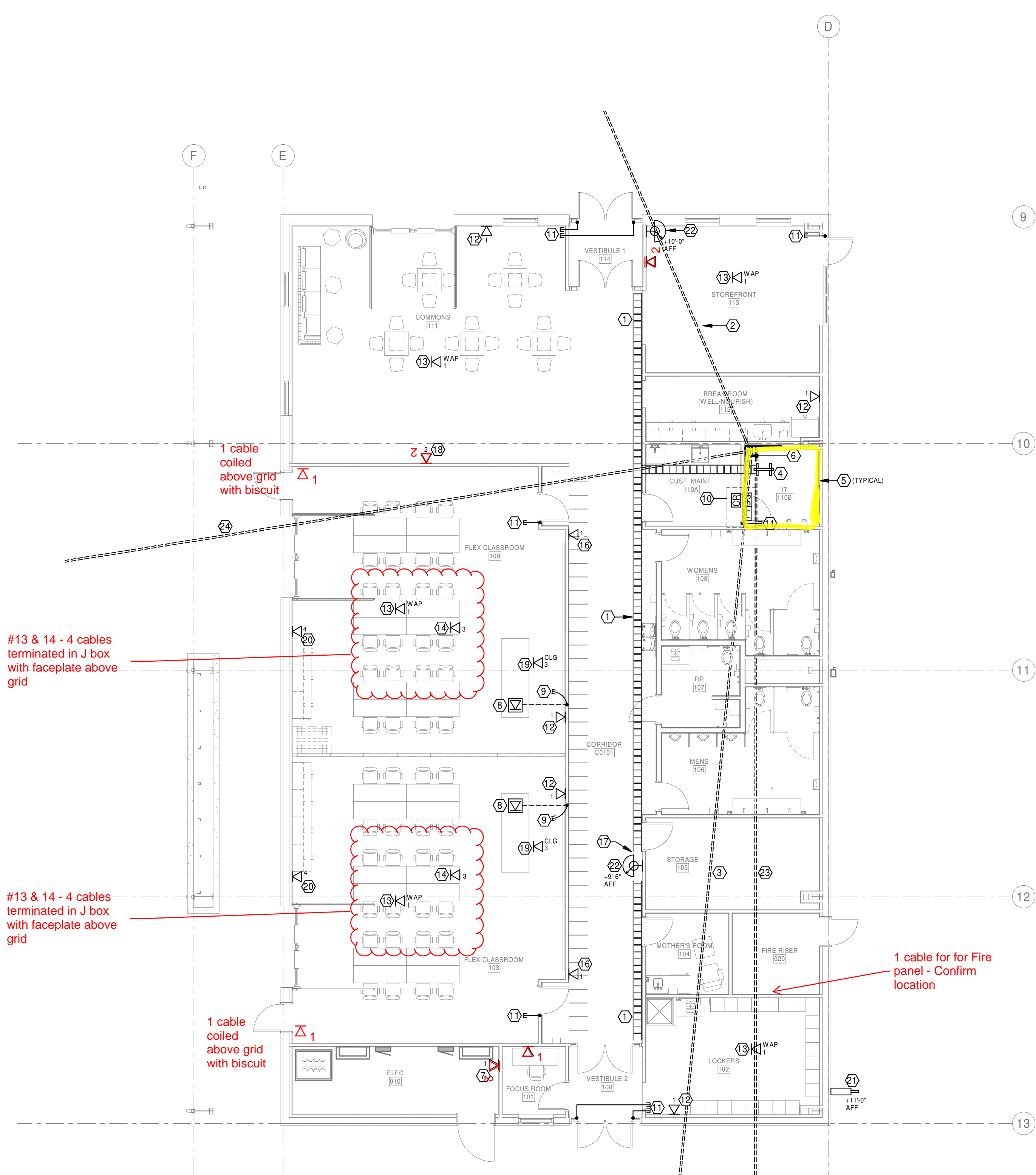
GENERAL NOTES - SYSTEMS

- A. COMPLY WITH LATEST ADOPTED NEC, NFPA 72 AND LATEST ADOPTED IBC/IFC.
- B. COORDINATE WALL MOUNTED DEVICE LOCATIONS WITH ARCHITECTURAL ELEVATIONS PRIOR TO ROUGH-IN.
- C. SEAL ALL PENETRATIONS OF RATED WALLS PER SPECIFICATIONS. SEE ARCHITECTURAL DRAWINGS FOR WALL RATINGS.
- D. ALL DATA DEVICES SHALL HAVE A 4" SQ. 2-1/8" DEEP BOX. 1-GANG MUDRING WITH 1" CONDUIT STUBBED ABOVE ACCESSIBLE CEILING SPACE. UNLESS NOTED OTHERWISE. ALL CONDUITS SHALL HAVE INSULATED THROAT BUSHINGS.
- E. PROVIDE PULLCORDS IN ALL DATA CONDUITS.
- F. ALL DATA CABLES, DEVICES AND COVER PLATES TO BE FURNISHED AND INSTALLED BY OWNER'S LOW VOLTAGE CONTRACTOR.
- G. ALL DATA DEVICES TO HAVE 2 CAT 6 CABLES PER DEVICE UNLESS NOTED OTHERWISE.
- H. PROVIDE AND INSTALL SOUND ISOLATION PADS FOR ALL JUNCTION BOXES LOCATED IN ACOUSTIC WALLS. REFER TO DETAILS ON ARCHITECTURAL DRAWINGS FOR REQUIREMENTS AND LOCATIONS.
- I. REFER TO DETAILS ON ARCHITECTURAL DRAWINGS FOR SEALING REQUIREMENTS FOR ACOUSTIC WALL AND FLOOR/CEILING PENETRATIONS.

FIRE ALARM SYSTEM IS A DELEGATED DESIGN SUBMITTAL BY THE FIRE ALARM CONTRACTOR.

KEYNOTES

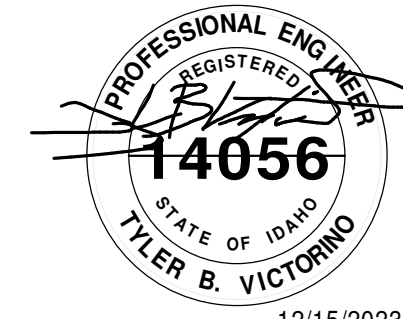
- 1. 12"x4" WIRE BASKET CABLE TRAY, BOTTOM MOUNTED AT 10'-0" AFF. PROVIDE ALL HARDWARE FOR WALL MOUNTING AND CEILING SUPPORT TRAPEZE FOR SECTIONS NOT ON WALL.
- 2. 2" CONDUIT WITH FIBER OPTIC CABLE BETWEEN BUILDINGS FOR FIBER INTERCONNECTION. ROUTE CONDUIT TO DATA RACK IN AREA 'B' IT ROOM. SEE RISER DETAIL 2/E1-401 FOR ADDITIONAL INFORMATION.
- 3. 2" CONDUIT WITH FIBER OPTIC CABLE BETWEEN BUILDINGS FOR FIBER INTERCONNECTION. ROUTE CONDUIT FROM DATA RACK IN AREA 'B' IT ROOM TO SHOP BUILDING. SEE RISER DETAIL 2/E1-401 & E1-100 FOR ADDITIONAL INFORMATION.
- 4. DATA RACKS AND EQUIPMENT, PROVIDED AND INSTALLED BY OWNER'S LOW VOLTAGE CONTRACTOR.
- 5. PROVIDE 4" x 8" x 3/4" FIRE-RATED PLYWOOD TELECOM BACKBOARD. SEE SPECIFICATIONS FOR ADDITIONAL INFORMATION.
- 6. TELECOMMUNICATIONS GROUND BAR. SEE SPECIFICATIONS FOR ADDITIONAL INFORMATION. PROVIDE #6CU GROUND IN 1/2". TO MAIN SERVICE GROUND BAR. COORDINATE LOCATION WITH OWNER'S LOW VOLTAGE CONTRACTOR.
- 7. DATA DEVICE FOR CONNECTION OF POWER METERING TO NETWORK. MOUNT AT 8'-0" AFF NEXT TO 'MDP'.
- 8. FLOOR BOX. SEE E1-302 FOR ADDITIONAL INFORMATION.
- 9. 1-1/2" STUBBED ABOVE ACCESSIBLE CEILING WITH PULLCORD AND INSULATED THROAT BUSHINGS.
- 10. ACCESS CONTROL EQUIPMENT PROVIDED AND INSTALLED BY OTHERS. ELECTRICAL TO PROVIDE AND INSTALL CONDUIT AND JUNCTION BOXES. COORDINATE CONDUIT AND JUNCTION BOX LOCATIONS WITH ACCESS CONTROL INSTALLER PRIOR TO ROUGH-IN.
- 11. 3/4" EMPTY CONDUIT WITH INSULATED THROAT BUSHINGS FROM CENTER HINGE TO ABOVE ACCESSIBLE CEILING SPACE FOR ACCESS CONTROL WIRING.
- 12. PoE CLOCK AT -96" AFF. EQUIPMENT AND CABLING BY OTHERS.
- 13. WIRELESS ACCESS POINT. ABOVE CEILING. EQUIPMENT AND CABLING BY OTHERS.
- 14. PROJECTOR LOCATION. EQUIPMENT AND CABLING BY OTHERS. LOCATED ABOVE CEILING.
- 15. CAMERA LOCATION AT +92" AFF. EQUIPMENT AND CABLING BY OTHERS.
- 16. ROOM SCHEDULER AT +42" AFF. PROVIDE 2-GANG JUNCTION BOX WITH 1/2" EMPTY CONDUIT WITH INSULATED THROAT BUSHINGS TO ABOVE ACCESSIBLE CEILING SPACE.
- 17. THIS PORTION OF CABLE TRAY NOT SHOWN FOR CLARITY.
- 18. TV BOX AT +72" AFF. SEE E1-302 FOR ADDITIONAL INFORMATION. PROVIDE 1" CONDUIT WITH PULLCORD AND INSULATED THROAT BUSHINGS TO ABOVE ACCESSIBLE CEILING SPACE.
- 19. DATA ROUGH-IN LOCATION FOR FRONT DISPLAY CEILING BOX.
- 20. DATA ROUGH-IN LOCATION FOR REAR DISPLAY WALL BOX. PROVIDE 2" EMPTY CONDUIT WITH INSULATED THROAT BUSHINGS TO ABOVE ACCESSIBLE CEILING SPACE. COORDINATE BOX LOCATION WITH OWNER'S LOW-VOLTAGE INSTALLER PRIOR TO ROUGH-IN.
- 21. EXTERIOR CAMERA. PROVIDED AND INSTALLED BY OTHERS. PROVIDE WP JUNCTION BOX AND 1/2" INTO BUILDING TO ABOVE ACCESSIBLE CEILING SPACE. COORDINATE LOCATION, HEIGHT AND ROUGH-IN REQUIREMENTS WITH OWNER PRIOR TO ROUGH-IN.
- 22. INTERIOR CAMERA. PROVIDED AND INSTALLED BY OTHERS. PROVIDE JUNCTION BOX AND 1/2" TO ABOVE ACCESSIBLE CEILING SPACE. COORDINATE LOCATION, HEIGHT AND ROUGH-IN REQUIREMENTS WITH OWNER PRIOR TO ROUGH-IN.
- 23. 2" COMMUNICATION CONDUIT TO COMMUNICATION PULLBOX. SEE E1-100 FOR ADDITIONAL INFORMATION.
- 24. 2" CONDUIT WITH PULLCORD BETWEEN BUILDINGS FOR FUTURE FIBER INTERCONNECTION STUBBED OUT 20'-0" FROM ACADEMIC BUILDING. ROUTE CONDUIT TO BARN BUILDING. SEE RISER DETAIL 2/E1-401 FOR ADDITIONAL INFORMATION.



1 SPECIAL SYSTEMS PLAN - AREA B  
E1-402 1/8" = 1'-0"



NEW AG AND HORTICULTURE BUILDING  
DPW22462\_CWIAGH  
COLLEGE OF WESTERN IDAHO AG AND HORTICULTURE



12/15/2023  
© 2023 | ALL RIGHTS RESERVED

CONSTRUCTION DOCUMENTS

12.15.2023  
PROJ# | DPW22462\_CWIAGH  
DESIGNED BY | BURFEND  
DRAWN BY | BURFEND  
REVIEWED BY | VICTORINO  
REVISIONS

SPECIAL SYSTEMS  
PLAN - AREA B

E1-402

GENERAL NOTES - SYSTEMS

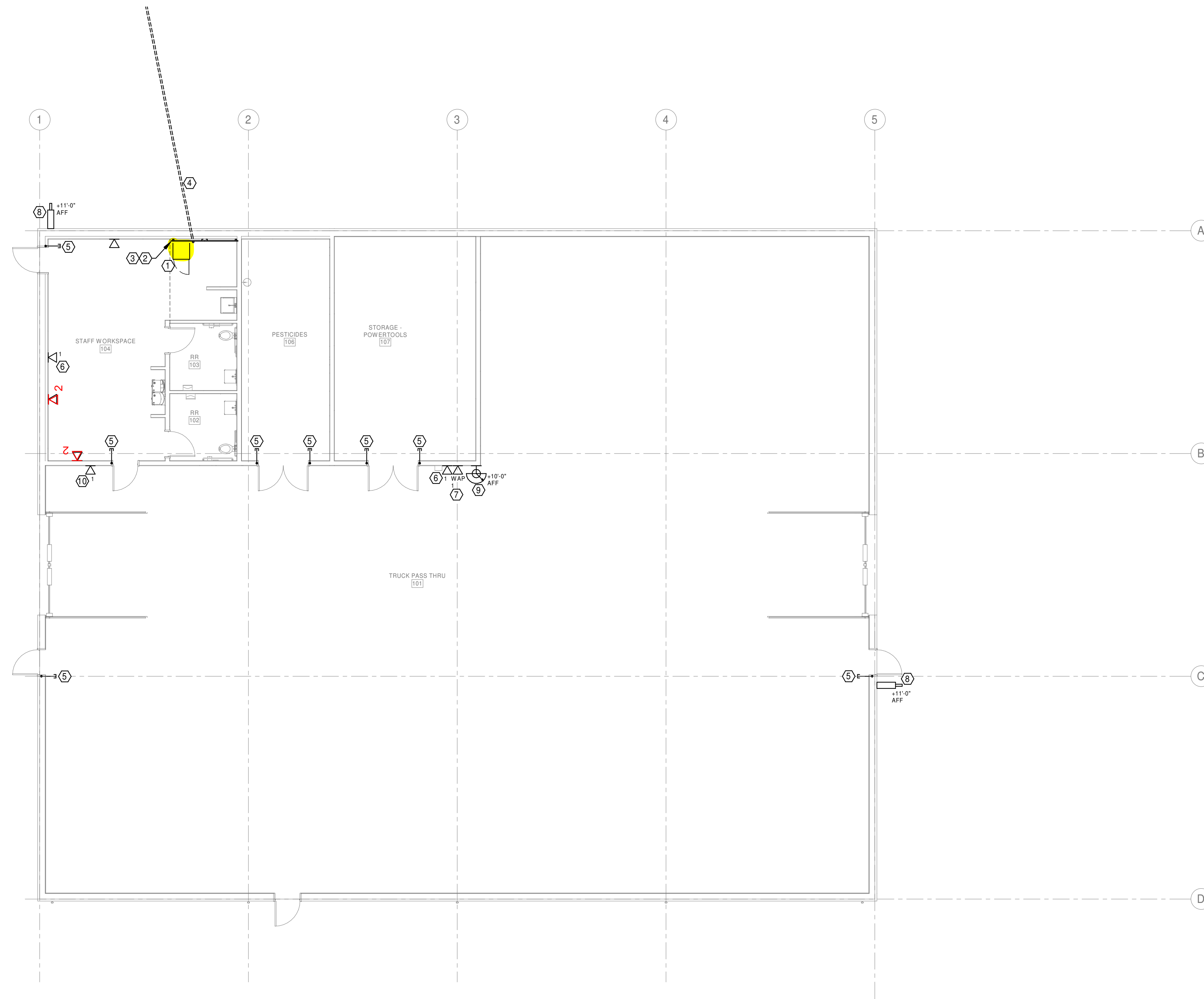
- A. COMPLY WITH LATEST ADOPTED NEC, NFPA 72 AND LATEST ADOPTED IBC/IFC.
- B. COORDINATE WALL MOUNTED DEVICE LOCATIONS WITH ARCHITECTURAL ELEVATIONS PRIOR TO ROUGH-IN.
- C. SEAL ALL PENETRATIONS OF RATED WALLS PER SPECIFICATIONS. SEE ARCHITECTURAL DRAWINGS FOR WALL RATINGS.
- D. ALL DATA DEVICES SHALL HAVE A 4"SQ. 2-1/8" DEEP BOX, 1-GANG MUDRING WITH 1" CONDUIT STUBBED ABOVE ACCESSIBLE CEILING SPACE, UNLESS NOTED OTHERWISE. ALL CONDUITS SHALL HAVE INSULATED THROAT BUSHINGS.
- E. PROVIDE PULLCORDS IN ALL DATA CONDUITS.
- F. ALL DATA CABLES, DEVICES AND COVER PLATES TO BE FURNISHED AND INSTALLED BY OWNER'S LOW VOLTAGE CONTRACTOR.
- G. ALL DATA DEVICES TO HAVE 2 CAT 6 CABLES PER DEVICE UNLESS NOTED OTHERWISE. CABLING FURNISHED AND INSTALLED BY OWNER'S LOW VOLTAGE CONTRACTOR.

G. All data locations will be a single cable unless otherwise noted.

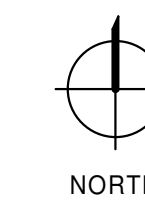
KEYNOTES

- #1 - Wall mount cabinet per spec
- #4 - 12 strand fiber back to Bldg B
- #5 1- Cable coiled above grid with biscuit
- #6 1- Cable for POE clock-wallplate
- #7 1- Cable for WAP with biscuit or wall plate
- #8 1- Cable for Security Camera - Coiled inside with biscuit
- #9 1- Cable in wallplate for camera
- #10 1-Cable terminated in wall plate

- 1. WALL MOUNTED DATA RACK AND EQUIPMENT, PROVIDED AND INSTALLED BY OWNER'S LOW VOLTAGE CONTRACTOR.
- 2. PROVIDE 8H x 34" FIRE-RATED PLYWOOD TELECOM BACKBOARD. SEE SPECIFICATIONS FOR ADDITIONAL INFORMATION.
- 3. TELECOMMUNICATIONS GROUND BAR. SEE SPECIFICATIONS FOR ADDITIONAL INFORMATION. PROVIDE #6CU GROUND IN 1/2"C. TO MAIN SERVICE GROUND BAR. COORDINATE LOCATION WITH OWNER'S LOW VOLTAGE CONTRACTOR.
- 4. CONDUIT WITH FIBER OPTIC CABLE BETWEEN BUILDINGS FOR FIBER INTERCONNECTION. ROUTE CONDUIT TO DATA RACK IN AREA 'B' IT ROOM. SEE RISER DETAIL 2/E1-401 FOR ADDITIONAL INFORMATION.
- 5. 3/4" EMPTY CONDUIT WITH INSULATED THROAT BUSHINGS FROM CENTER HINGE TO ABOVE ACCESSIBLE CEILING SPACE FOR ACCESS CONTROL WIRING.
- 6. POE CLOCK AT -8" AFF. EQUIPMENT AND CABLING BY OTHERS.
- 7. WIRELESS ACCESS POINT. AT +10'-0" AFF. EQUIPMENT AND CABLING BY OTHERS.
- 8. EXTERIOR CAMERA. PROVIDED AND INSTALLED BY OTHERS. PROVIDE WP JUNCTION BOX AND 1/2"C. INTO BUILDING. COORDINATE LOCATION, HEIGHT AND ROUGH-IN REQUIREMENTS WITH OWNER PRIOR TO ROUGH-IN.
- 9. INTERIOR CAMERA. PROVIDED AND INSTALLED BY OTHERS. PROVIDE JUNCTION BOX AND 1/2"C. TO ABOVE ACCESSIBLE CEILING SPACE. COORDINATE LOCATION, HEIGHT AND ROUGH-IN REQUIREMENTS WITH OWNER PRIOR TO ROUGH-IN.
- 10. DATA DEVICE FOR CONNECTION OF POWER METERING TO NETWORK. MOUNT AT 8'-0" AFF NEXT TO PANEL 'S'.



1 SPECIAL SYSTEMS PLAN  
E2-401 1/8" = 1'-0"



NEW AG AND HORTICULTURE BUILDING  
DPW22462\_CWIAGH  
COLLEGE OF WESTERN IDAHO AG AND HORTICULTURE



12/15/2023

© 2023 | ALL RIGHTS RESERVED

CONSTRUCTION DOCUMENTS

12.15.2023  
PROJ.# | DPW22462\_CWIAGH  
DESIGNED BY | BURFEND  
DRAWN BY | BURFEND  
REVIEWED BY | LAST NAME  
REVISIONS

SPECIAL SYSTEMS PLAN

E2-401

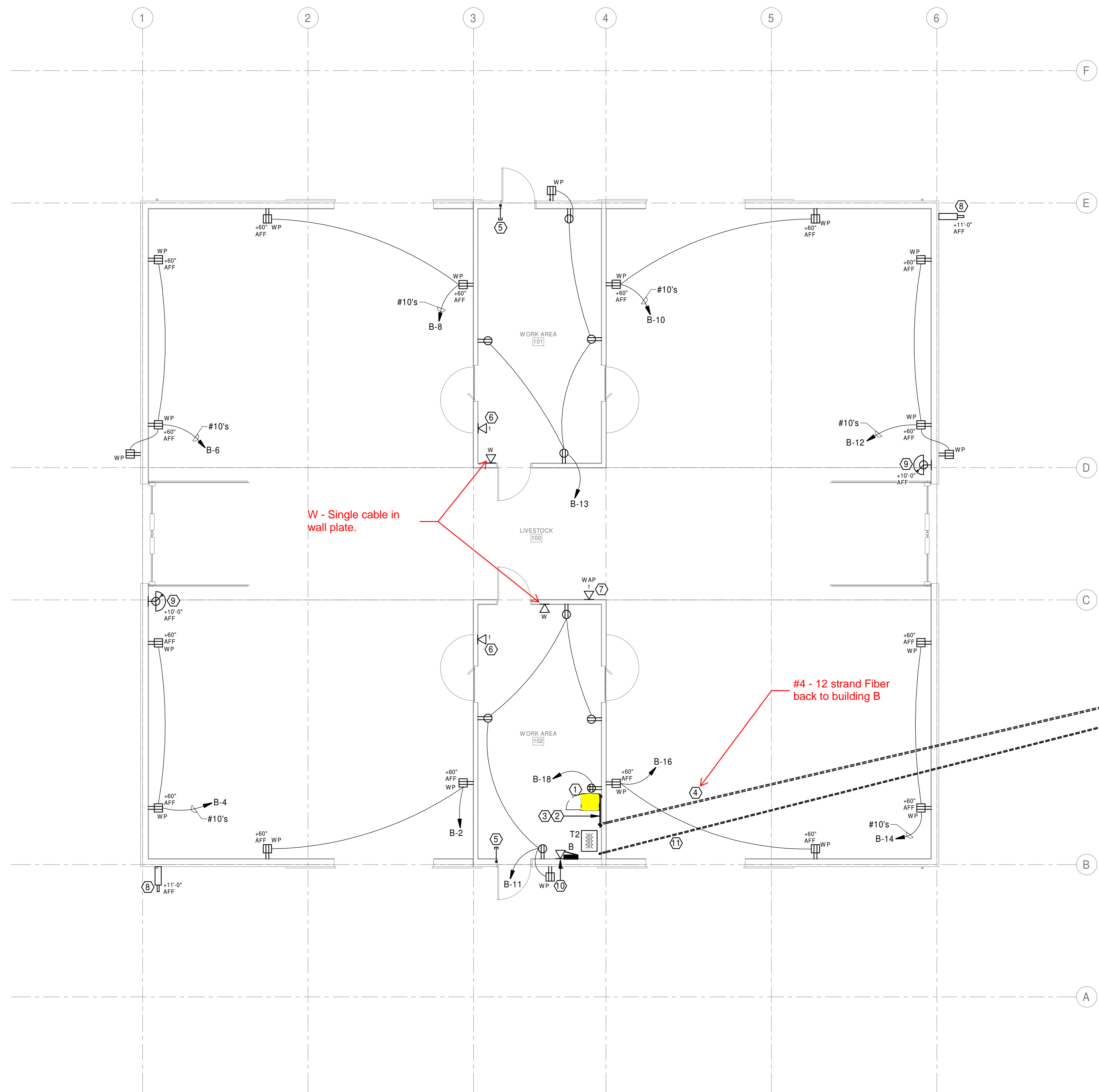
GENERAL NOTES - POWER

- A. COMPLY WITH LATEST ADOPTED NEC AND APPLICABLE CODES/STANDARDS.
- B. SHARED NEUTRALS ARE NOT ALLOWED FOR SINGLE PHASE BRANCH CIRCUITS.
- C. LABEL ALL COVER PLATES WITH PANEL AND CIRCUIT NUMBER ON FACE OF PLATE. SEE SPECIFICATIONS FOR ADDITIONAL INFORMATION.
- D. COORDINATE WALL MOUNTED DEVICE LOCATIONS WITH ARCHITECTURAL ELEVATIONS PRIOR TO ROUGH-IN.
- E. SEAL ALL PENETRATIONS OF RATED WALLS PER SPECIFICATIONS. SEE ARCHITECTURAL DRAWINGS FOR WALL RATINGS.
- F. THERMOSTATS, PROVIDED AND INSTALLED BY MECHANICAL. ELECTRICAL TO PROVIDE 1 BOX AT 44" AND 1/2" CONDUIT TO ACCESSIBLE CEILING SPACE OR STRUCTURE FOR DEVICE WIRING. REFER TO MECHANICAL DRAWINGS FOR LOCATIONS.

GENERAL NOTES - SYSTEMS

- A. COMPLY WITH LATEST ADOPTED NEC, NFPA 72 AND LATEST ADOPTED IBC/IFC.
- B. COORDINATE WALL MOUNTED DEVICE LOCATIONS WITH ARCHITECTURAL ELEVATIONS PRIOR TO ROUGH-IN.
- C. SEAL ALL PENETRATIONS OF RATED WALLS PER SPECIFICATIONS. SEE ARCHITECTURAL DRAWINGS FOR WALL RATINGS.
- D. ALL DATA DEVICES SHALL HAVE A 4" SQ., 2-1/8" DEEP BOX, 1-GANG MUDRING WITH 1" CONDUIT STUBBED ABOVE ACCESSIBLE CEILING SPACE, UNLESS NOTED OTHERWISE. ALL CONDUITS SHALL HAVE INSULATED THROAT BUSHINGS.
- E. PROVIDE PULLCORDS IN ALL DATA CONDUITS.
- F. ALL DATA CABLES, DEVICES AND COVER PLATES TO BE FURNISHED AND INSTALLED BY OWNER'S LOW VOLTAGE CONTRACTOR.
- G. ALL DATA DEVICES TO HAVE 2 CAT 6 CABLES PER DEVICE UNLESS NOTED OTHERWISE.

G - All locations to have single cable unless otherwise specified.



KEYNOTES

- #1 - Wall mount cabinet per specs
  - #2 & 3 - See CWI wiring specs
  - #4 - 12 strand Fiber back to building B
  - #5 - Single cable terminated with rj45
  - #6 & 7 - Single cable each terminated in j box
  - #8 - Single cable terminated with rj45
  - #9 - Single cable terminated with biscuit or mounted J box.
  - #10 - Single cable terminated in J box
1. WALL MOUNTED DATA RACK AND EQUIPMENT, PROVIDED AND INSTALLED BY OWNER'S LOW VOLTAGE CONTRACTOR.
  2. PROVIDE 8H x 3/4" FIRE-RATED PLYWOOD TELECOM BACKBOARD. SEE SPECIFICATIONS FOR ADDITIONAL INFORMATION.
  3. TELECOMMUNICATIONS GROUND BAR. SEE SPECIFICATIONS FOR ADDITIONAL INFORMATION. PROVIDE #6CU GROUND IN 1/2" TO MAIN SERVICE GROUND BAR. COORDINATE LOCATION WITH OWNER'S LOW VOLTAGE CONTRACTOR.
  4. 2" CONDUIT WITH FIBER OPTIC CABLE BETWEEN BUILDINGS FOR FIBER INTERCONNECTION. ROUTE CONDUIT TO DATA RACK IN AREA B' IT ROOM. SEE RISER DETAIL 2/E1-401 FOR ADDITIONAL INFORMATION.
  5. 3/4" EMPTY CONDUIT WITH INSULATED THROAT BUSHINGS FROM CENTER HINGE TO ABOVE ACCESSIBLE CEILING SPACE FOR ACCESS CONTROL WIRING.
  6. PoE CLOCK AT +96" AFF. EQUIPMENT AND CABLING BY OTHERS.
  7. WIRELESS ACCESS POINT, AT +10'-0" AFF. EQUIPMENT AND CABLING BY OTHERS.
  8. EXTERIOR CAMERA, PROVIDED AND INSTALLED BY OTHERS. PROVIDE WP JUNCTION BOX AND 1/2" INTO BUILDING. COORDINATE LOCATION, HEIGHT AND ROUGH-IN REQUIREMENTS WITH OWNER PRIOR TO ROUGH-IN.
  9. INTERIOR CAMERA, PROVIDED AND INSTALLED BY OTHERS. PROVIDE WP JUNCTION BOX AND 1/2" TO ABOVE ACCESSIBLE CEILING SPACE. COORDINATE LOCATION, HEIGHT AND ROUGH-IN REQUIREMENTS WITH OWNER PRIOR TO ROUGH-IN.
  10. DATA DEVICE FOR CONNECTION OF POWER METERING TO NETWORK. MOUNT AT 8'-0" AFF NEXT TO PANEL 'B'.
  11. PANEL FEEDER. SEE ONE-LINE DIAGRAM AND ELECTRICAL SITE PLAN FOR ADDITIONAL INFORMATION.

1 POWER & SPECIAL SYSTEMS PLAN  
E3-301 1/8" = 1'-0"



NEW AG AND HORTICULTURE BUILDING  
DPW22462\_CWIAIGH  
COLLEGE OF WESTERN IDAHO AG AND HORTICULTURE



12/15/2023  
© 2023 | ALL RIGHTS RESERVED

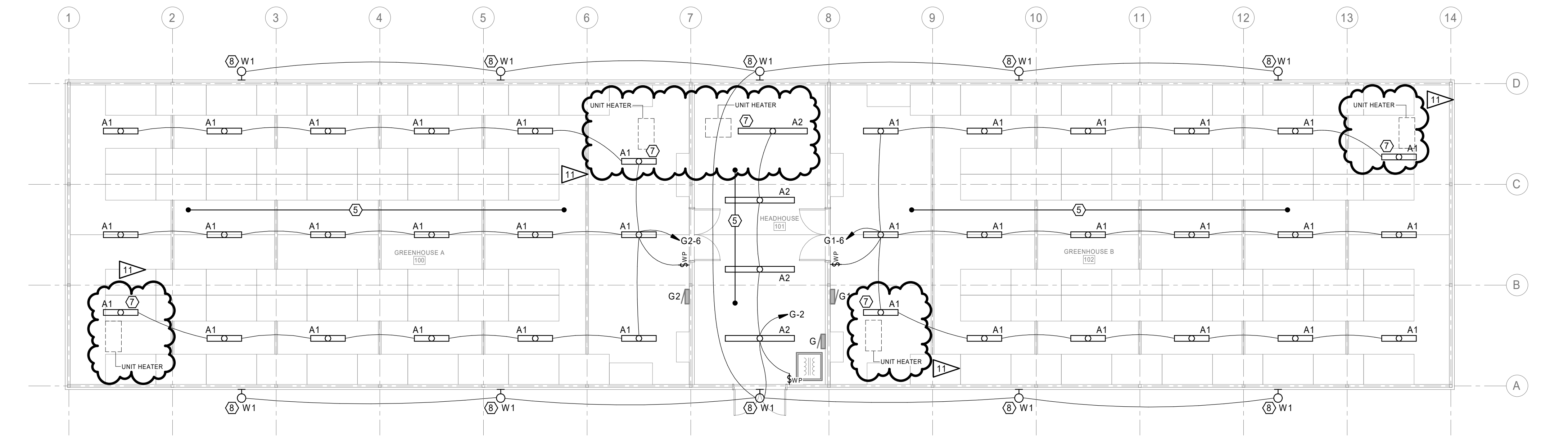
CONSTRUCTION DOCUMENTS

12.15.2023  
PROJ.# DPW22462\_CWIAIGH  
DESIGNED BY | BURFEND  
DRAWN BY | BURFEND  
REVIEWED BY | LAST NAME  
REVISIONS

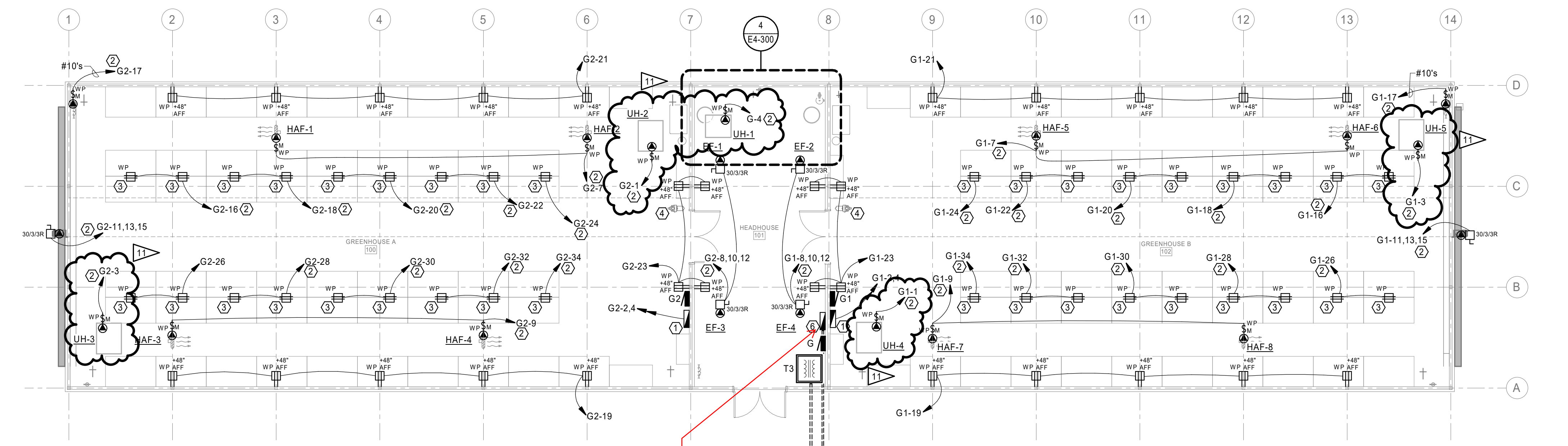
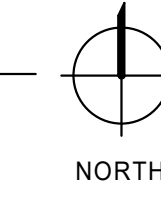
POWER & SPECIAL SYSTEMS PLAN

E3-301

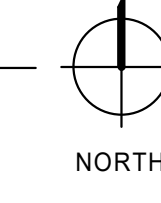




1 LIGHTING PLAN  
E4-300 1/8" = 1'-0"

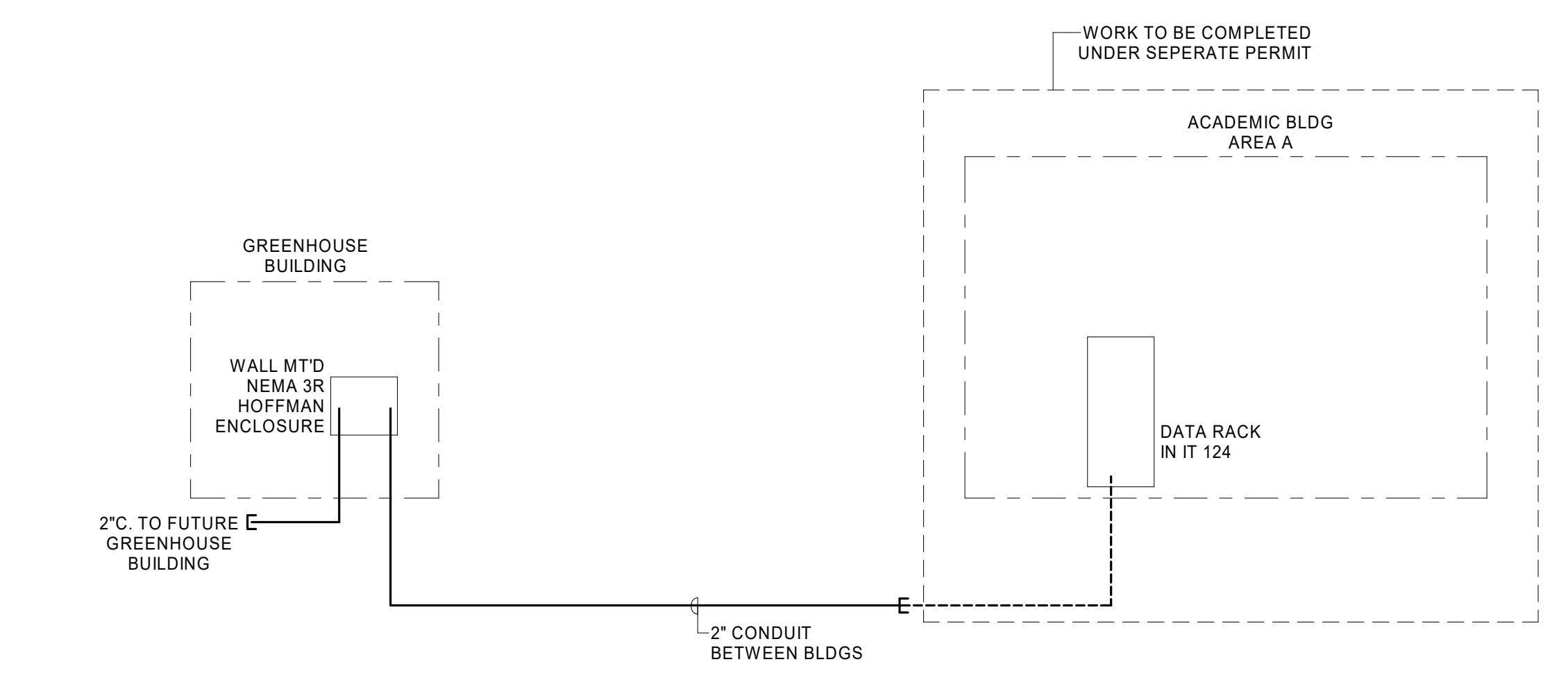


2 POWER PLAN  
E4-300 1/8" = 1'-0"

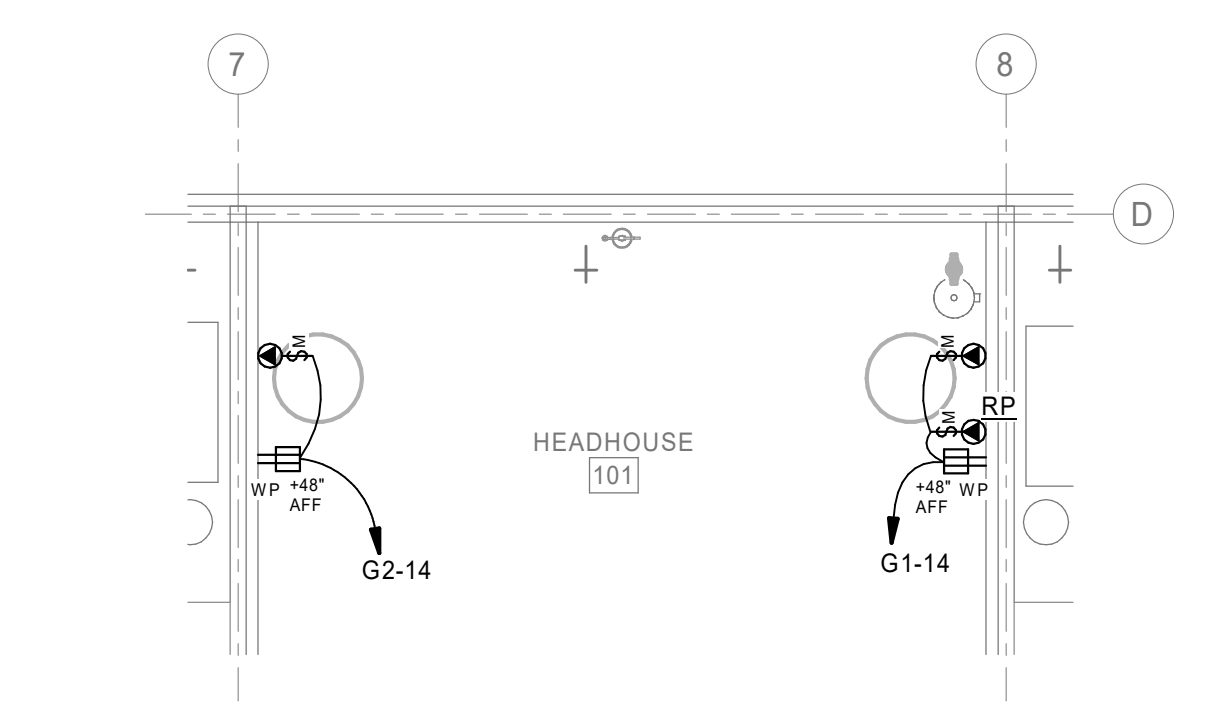


#6 Fiber from Bldg A terminates in NEMA box at this location. Fiber Tray to be mounted in NEMA box

6 copper cables w/ final location TBD for WAP, Cameras, Door control and Mechanical



3 PARTIAL FIBER OPTIC RISER DIAGRAM  
E4-300 NOT TO SCALE



4 POWER PLAN - WATER HEATERS  
E4-300 1/4" = 1'-0"

GENERAL NOTES - LIGHTING

- A. COMPLY WITH LATEST ADOPTED NEC AND APPLICABLE CODES/STANDARDS.
- B. SHARED NEUTRALS ARE NOT ALLOWED FOR SINGLE PHASE BRANCH CIRCUITS.
- C. LABEL ALL COVER PLATES WITH PANEL AND CIRCUIT NUMBER ON FACE OF PLATE. SEE SPECIFICATIONS FOR ADDITIONAL INFORMATION.
- D. COORDINATE WALL MOUNTED DEVICE AND FIXTURE LOCATIONS WITH ARCHITECTURAL ELEVATIONS PRIOR TO ROUGH-IN.
- E. SEAL ALL PENETRATIONS OF RATED WALLS PER SPECIFICATIONS. SEE ARCHITECTURAL DRAWINGS FOR WALL RATINGS.

GENERAL NOTES - POWER

- A. COMPLY WITH LATEST ADOPTED NEC AND APPLICABLE CODES/STANDARDS.
- B. SHARED NEUTRALS ARE NOT ALLOWED FOR SINGLE PHASE BRANCH CIRCUITS.
- C. LABEL ALL COVER PLATES WITH PANEL AND CIRCUIT NUMBER ON FACE OF PLATE. SEE SPECIFICATIONS FOR ADDITIONAL INFORMATION.
- D. COORDINATE WALL MOUNTED DEVICE LOCATIONS WITH ARCHITECTURAL ELEVATIONS PRIOR TO ROUGH-IN.
- E. SEAL ALL PENETRATIONS OF RATED WALLS PER SPECIFICATIONS. SEE ARCHITECTURAL DRAWINGS FOR WALL RATINGS.
- F. THERMOSTATS, PROVIDED AND INSTALLED BY MECHANICAL ELECTRICAL TO PROVIDE J-BOX AT +44" AND 1/2" CONDUIT TO ACCESSIBLE CEILING SPACE OR STRUCTURE FOR DEVICE WIRING. REFER TO MECHANICAL DRAWINGS FOR LOCATIONS.

KEYNOTES

- 1. LINK4 GROW CONTROLLER. PROVIDED BY OTHERS. INSTALLATION AND WIRING BY ELECTRICAL. COORDINATE WIRING WITH CONTROLLER WIRING DIAGRAM.
- 2. ROUTE CIRCUIT THRU LINK4 CONTROLLER. COORDINATE WITH CONTROLLER WIRING DIAGRAM.
- 3. RECEPTACLE FOR GROW LIGHTS. COORDINATE MOUNTING HEIGHT/LOCATION WITH GREENHOUSE INSTALLER. PROVIDE ADDITIONAL UNISTRUT FOR MOUNTING.
- 4. RIDGE VENT MOTOR. 24V DC. ROUTE WIRING IN CONDUIT THRU LINK4 GROW CONTROLLER. COORDINATE WITH CONTROLLER WIRING DIAGRAM.
- 5. COORDINATE MOUNTING HEIGHT WITH GREENHOUSE STRUCTURAL TRUSSES. PROVIDE ADDITIONAL UNISTRUT FOR MOUNTING.
- 6. WALL MOUNTED NEMA 3R HOFFMAN ENCLOSURE (24"X24"X8") FOR FIBER OPTIC CABLE. SEE DETAIL 3 FOR ADDITIONAL INFORMATION.
- 7. COORDINATE LIGHT FIXTURE MOUNTING LOCATION WITH UNIT HEATER.
- 8. COORDINATE LIGHT FIXTURE MOUNTING LOCATION WITH GREENHOUSE INSTALLER.

NEW AG AND HORTICULTURE BUILDING  
DPW22462\_CWIAGH  
COLLEGE OF WESTERN IDAHO AG AND HORTICULTURE



© 2023 | ALL RIGHTS RESERVED

CONSTRUCTION DOCUMENTS

12.15.2023  
PROJ.# | DPW22462\_CWIAGH  
DESIGNED BY | BURFEND  
DRAWN BY | BURFEND  
REVIEWED BY | VICTORINO

REVISIONS  
# 03.15.2024 ASB 06  
11 05.03.2024 ASB 11