

© 2023 | ALL RIGHTS RESERVED

CONSTRUCTION DOCUMENTS

December 15, 2023
PROJ.# | DPW22461_CWIHS
DESIGNED BY | DEESE
DRAWN BY | LAST NAME
REVIEWED BY | BAKER
REVISIONS



December 15, 2023
HEALTH SCIENCES BUILDING
DPW22461_CWIHS
COLLEGE OF WESTERN IDAHO HEALTH SCIENCES
CONSTRUCTION DOCUMENTS

CONTRACTOR
ESI INC
3330 EAST LOUISE DRIVE #300
MERIDIAN, IDAHO 83642
208.362.3040
CORY WILTSHIRE

ARCHITECT/ENGINEER
CUSHING TERRELL
800 W MAIN ST SUITE 800
BOISE ID 83702
208.336.4900
TRACY BAKER

CIVIL AND LANDSCAPE
THE LAND GROUP
462 E SHORE DRIVE #100
EAGLE ID 83616
208.939.4041
MATTHEW ADAMS

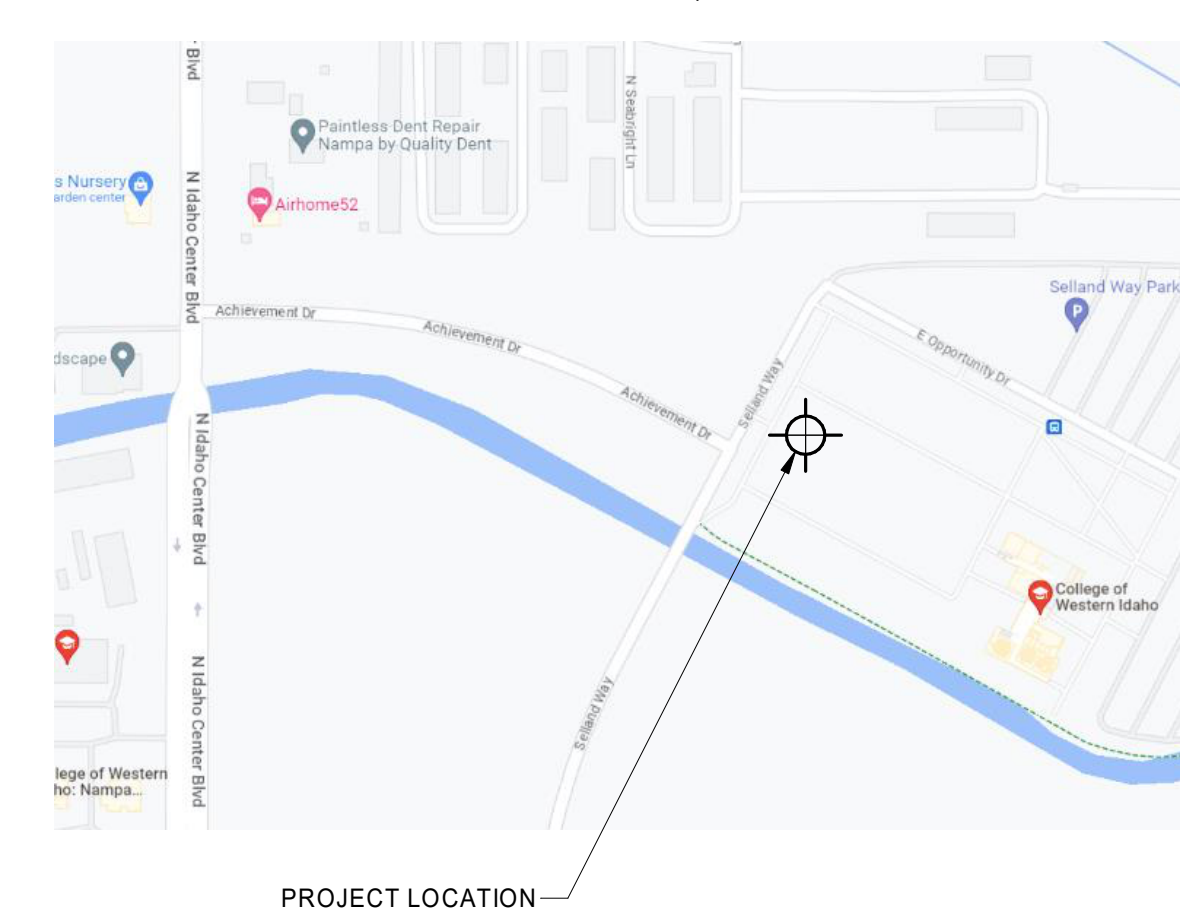
STRUCTURAL
AXIOM PLLC
121 N 9TH ST #401
BOISE ID 83702
208.639.4520
WILL SLAVEN

MECHANICAL / PLUMBING
CUSHING TERRELL
800 W MAIN ST SUITE 800
BOISE ID 83702
208.336.4900
LAURA RANKIN

ELECTRICAL
CUSHINGTERRELL
800 W MAIN ST SUITE 800
BOISE ID 83702
208.336.4900
DAVE BURFEIND

PROJECT ADDRESS
5500 East Opportunity Drive
Nampa, ID 83687

VICINITY MAP: *Locator*



SHEET INDEX

GENERAL
G001 COVER SHEET
G101 FIRST FLOOR CODE PLAN AND ANALYSIS
G102 SECOND FLOOR CODE PLAN
G103 THIRD FLOOR CODE PLAN
G200 ASSEMBLIES, UL RATING DETAIL
G201 UL FIRE RESISTANCE RATINGS
G202 UL FIRE RESISTANCE RATINGS
G203 UL FIRE RESISTANCE RATINGS

CIVIL
C0.00 COVER AND NOTES
C1.00 EXISTING CONDITIONS & DEMOLITION
C2.00 SITE PLAN
C2.10 LAYOUT PLAN
C2.50 SITE DETAILS
C4.00 GRADING PLAN
C4.50 GRADING DETAILS
C5.00 DRAINAGE AND UTILITY PLAN
C5.50 DRAINAGE AND UTILITY DETAILS

LANDSCAPE
L1.00 LANDSCAPE PLAN
L1.50 LANDSCAPE DETAILS
L2.00 IRRIGATION PLAN
L2.50 IRRIGATION DETAIL

STRUCTURAL
S001 STRUCTURAL COVER SHEET
S002 GENERAL NOTES
S003 GENERAL NOTES
S005 LOADING PLANS
S100 FOUNDATION DIMENSION PLAN
S101 FOUNDATION PLAN
S111 LEVEL 2 FRAMING PLAN
S112 LEVEL 3 FRAMING PLAN
S113 ROOF FRAMING PLAN
S201 BRACED FRAME ELEVATIONS
S202 BRACED FRAME ELEVATIONS
S251 BRACED FRAME DETAILS
S401 ENLARGED CANOPY PLANS
S402 ENLARGED ELEVATOR PLANS
S403 ENLARGED STAIR FRAMING PLANS
S404 GRAND STAIR DETAILS
S501 CONCRETE DETAILS
S502 CONCRETE DETAILS
S503 CONCRETE DETAILS
S531 STEEL DETAILS
S532 STEEL DETAILS
S533 STEEL DETAILS
S534 STEEL DETAILS
S601 CONCRETE SCHEDULES
S631 STEEL SCHEDULES
S700 OVERALL SECTIONS AND ELEVATIONS
S701 ELEVATIONS
S702 ELEVATIONS
S703 SECTIONS
S704 SECTIONS
S705 SECTIONS
S771 COLD FORMED DETAILS
S772 COLD FORMED DETAILS
S773 COLD FORMED DETAILS

ARCHITECTURAL
A5100 ARCHITECTURAL SITE PLAN & DETAILS
A101 FIRST FLOOR PLAN
A102 SECOND FLOOR PLAN
A103 THIRD FLOOR PLAN
A110 INTERIOR PLAN DETAILS
A120 ROOF PLAN
A121 ENLARGED CANOPY PLANS
A122 ENLARGED CANOPY PLANS
A131 ROOF DETAILS
A132 ROOF DETAILS
A133 CANOPY SECTIONS AND DETAILS
A201 EXTERIOR ELEVATIONS
A202 EXTERIOR ELEVATIONS
A301 BUILDING SECTIONS
A311 WALL SECTIONS
A312 WALL SECTIONS
A313 WALL SECTIONS
A314 WALL SECTIONS
A315 WALL SECTIONS
A316 WALL SECTIONS
A317 WALL SECTIONS
A321 EXTERIOR DETAILS
A322 EXTERIOR DETAILS
A323 EXTERIOR DETAILS
A324 EXTERIOR DETAILS
A401 ELEVATOR PLANS & SECTIONS
A402 NORTH STAIR PLANS & SECTIONS
A403 SOUTH STAIR PLANS & SECTIONS
A404 ELEVATOR AND STAIR DETAILS
A405 GRAND STAIR PLANS & SECTIONS
A406 GRAND STAIR DETAILS
A501 FIRST FLOOR FINISH PLAN
A502 SECOND FLOOR FINISH PLAN
A503 THIRD FLOOR FINISH PLAN
A504 FINISH MATERIAL LIST
A601 DOOR SCHEDULE
A602 WINDOW ELEVATIONS
A603 WINDOW ELEVATIONS
A701 ENLARGED PLANS / INTERIOR ELEVATIONS
A702 ENLARGED PLANS / INTERIOR ELEVATIONS
A703 ENLARGED PLANS / INTERIOR ELEVATIONS
A704 ENLARGED PLANS / INTERIOR ELEVATIONS
A705 ENLARGED PLANS / INTERIOR ELEVATIONS
A706 ENLARGED PLANS / INTERIOR ELEVATIONS
A707 ENLARGED PLANS / INTERIOR ELEVATIONS
A708 ENLARGED PLANS / INTERIOR ELEVATIONS
A801 INTERIOR ELEVATIONS / CASEWORK DETAILS
A802 INTERIOR ELEVATIONS / CASEWORK DETAILS
A803 INTERIOR ELEVATIONS / CASEWORK DETAILS
A804 INTERIOR ELEVATIONS
A805 INTERIOR ELEVATIONS
A901 FIRST FLOOR REFLECTED CEILING PLAN
A902 SECOND FLOOR REFLECTED CEILING PLAN
A903 THIRD FLOOR REFLECTED CEILING PLAN

MECHANICAL
M001 MECHANICAL LEGENDS, NOTES, ABBREVIATIONS
M002 MECHANICAL SCHEDULES
M003 MECHANICAL SCHEDULES
M004 MECHANICAL SCHEDULES
M101 FIRST FLOOR HVAC
M102 SECOND FLOOR HVAC
M103 THIRD FLOOR HVAC
M104 ROOF HVAC
M201 FIRST FLOOR HYDRONIC PIPING PLAN
M202 SECOND FLOOR HYDRONIC PIPING PLAN
M203 THIRD FLOOR HYDRONIC PIPING PLAN
M300 ENLARGED MECHANICAL ROOM PLAN
M400 HEATING WATER SYSTEM DIAGRAM
M402 MECHANICAL DETAILS
M403 MECHANICAL DETAILS
M404 MECHANICAL DETAILS
M409 HVAC DETAILS
M500 MECHANICAL SYSTEM CONTROLS
M501 MECHANICAL SYSTEM CONTROLS
M502 MECHANICAL SYSTEM CONTROLS

PLUMBING
P001 PLUMBING SCHEDULES AND LEGENDS
P100 DWV FOUNDATION FLOOR PLAN
P101 DWV FIRST FLOOR PLAN
P102 DWV SECOND FLOOR PLAN
P103 DWV THIRD FLOOR PLAN
P104 ROOF PLUMBING PLAN
P201 PLUMBING FIRST FLOOR PLAN
P202 PLUMBING SECOND FLOOR PLAN
P203 PLUMBING THIRD FLOOR PLAN
P301 ENLARGED DWV PLANS
P302 ENLARGED PLUMBING PLANS
P303 ENLARGED MECHANICAL 112 PLUMBING PLANS
P401 PLUMBING DETAILS
P402 PLUMBING DETAILS
P403 PLUMBING DETAILS

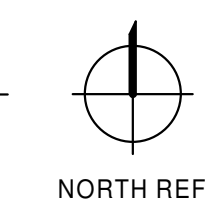
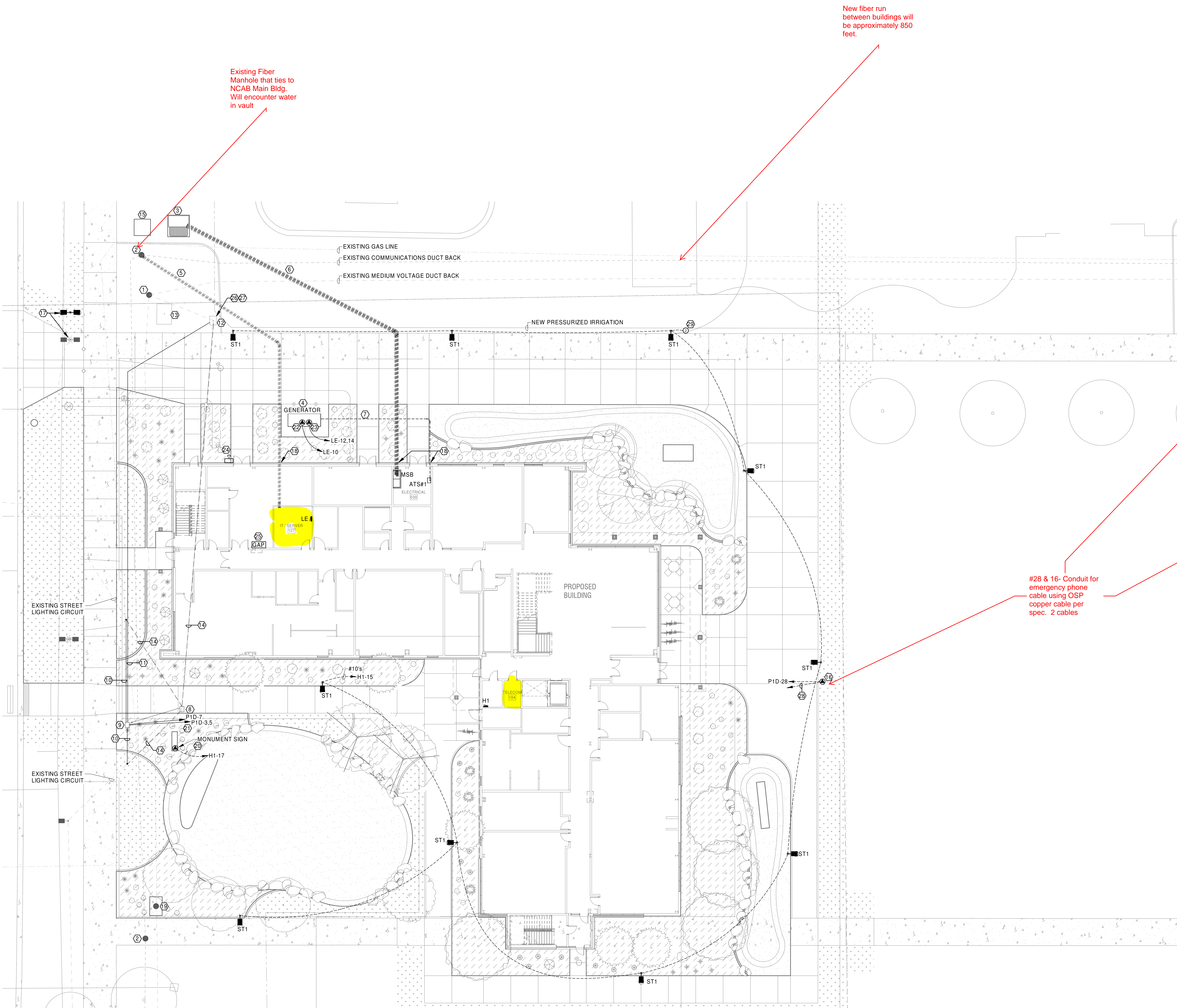
ELECTRICAL
E001 ELECTRICAL LEGENDS
E002 ONE-LINE DIAGRAM
E003 PANEL SCHEDULES
E004 PANEL SCHEDULES
E005 PANEL SCHEDULES
E006 LIGHTING SCHEDULES
E007 ELECTRICAL DETAILS
E100 ELECTRICAL SITE PLAN
E201 FIRST FLOOR LIGHTING PLAN
E202 SECOND FLOOR LIGHTING PLAN
E203 THIRD FLOOR LIGHTING PLAN
E301 FIRST FLOOR POWER PLAN
E302 SECOND FLOOR POWER PLAN
E303 THIRD FLOOR POWER PLAN
E304 ROOF POWER PLAN
E401 FIRST FLOOR SPECIAL SYSTEMS PLAN
E402 SECOND FLOOR SPECIAL SYSTEMS PLAN
E403 THIRD FLOOR SPECIAL SYSTEMS PLAN

GENERAL NOTES - SITE

- A. COMPLY WITH LATEST ADOPTED NEC AND APPLICABLE CODES/STANDARDS.
- B. SHARED NEUTRALS ARE NOT ALLOWED FOR SINGLE PHASE BRANCH CIRCUITS.
- C. ALL SITE CONDUITS TO BE 3/4" MINIMUM.
- D. ALL SITE CONDUITS TO BE FURNISHED WITH PULLCORDS.
- E. ALL SITE CONDUCTORS TO BE #10 CU MINIMUM.

KEYNOTES

1. EXISTING MEDIUM VOLTAGE POWER MANHOLE MH#13.
2. EXISTING FIBER/TELECOM MANHOLE.
3. NEW UTILITY TRANSFORMER, INSTALLED UNDER SEPERATE CONTRACT.
4. NEW NATURAL GAS GENERATOR. SEE ONE-LINE DIAGRAM AND SPECIFICATIONS FOR ADDITIONAL INFORMATION.
5. (2) 4" CONDUITS WITH COMMUNICATION BENDS. COORDINATE ROUTING AND DEPTH WITH EXISTING UNDERGROUND UTILITIES.
6. SECONDARY POWER FEEDER. SEE ONE-LINE DIAGRAM FOR ADDITIONAL INFORMATION. COORDINATE ROUTING AND DEPTH WITH EXISTING UNDERGROUND UTILITIES.
7. GENERATOR POWER FEEDER. SEE ONE-LINE DIAGRAM FOR ADDITIONAL INFORMATION. COORDINATE ROUTING AND DEPTH WITH EXISTING UNDERGROUND UTILITIES.
8. RELOCATE EXISTING STREET LIGHTING PULLBOX AS SHOWN.
9. RELOCATED STREET LIGHTING PULLBOX.
10. INTERCEPT EXISTING STREET LIGHTING CIRCUIT AND EXTEND TO NEW PULLBOX LOCATION.
11. NEW 2" CONDUIT AND CONDUCTORS FOR STREET LIGHTING CIRCUITS TO EXISTING PANELBOARD TO TEMPORARY POWER STREET LIGHTING DURING BUILDING CONSTRUCTION.
12. EXISTING STREET LIGHTING PANELBOARD ENCLOSURE. PANELBOARD TO BE REMOVED AND SALVAGED TO OWNER ONCE ALL CIRCUITS FROM PANELBOARD HAVE BEEN EXTENDED AND ENERGIZED.
13. EXISTING PAD MOUNT TRANSFORMER. TRANSFORMER TO BE REMOVED AND SALVAGED TO OWNER ONCE ALL CIRCUITS FROM PANELBOARD HAVE BEEN EXTENDED AND ENERGIZED.
14. EXISTING STREET LIGHTING CIRCUITS TO BE REMOVED AND RE-ROUTED/EXTENDED IN NEW CONDUIT (NOTES 10 & 11).
15. NEW MEDIUM VOLTAGE SWITCH, INSTALLED UNDER SEPERATE CONTRACT.
16. EMERGENCY PHONE TOWER, TALKPHONE ETP-MTR OR APPROVED EQUAL COORDINATE SPECIFICATION WITH OWNER PRIOR TO ORDERING. PROVIDE CONCRETE FOUNDATION PER INSTALLATION INSTRUCTIONS.
17. EXISTING STREET LIGHT POLE TO BE RELOCATED 10'-0". PROVIDE NEW POLE BASE AND RECONNECT TO EXISTING LIGHTING CIRCUIT. ROUTE CONDUITS BELOW STRUCTURAL FOOTINGS. COORDINATE WITH STRUCTURAL DRAWINGS FOR MINIMUM DEPTH BELOW FOOTINGS.
19. EXISTING MEDIUM VOLTAGE POWER MANHOLE MH#14. THIS MANHOLE WILL BE USED TO PROVIDE POWER FOR FUTURE BUILDING EXPANSION.
20. PROVIDE ACUITY BRANDS (SBOR 10 NA G2 FIXTURE MOUNTED SENSOR FOR MONUMENT SIGN CONTROL. CONNECT PER MANUFACTURERS INSTALLATION DIAGRAM.
21. NEW 2" CONDUIT AND EXTEND EXISTING CONDUCTORS FOR STREET AND BRIDGE LIGHTING CIRCUITS. ENERGIZE CIRCUITS ONCE PERMANENT BUILDING POWER HAS BEEN ESTABLISHED.
22. GENERATOR BATTERY CHARGER. COORDINATE WITH GENERATOR MANUFACTURER.
23. GENERATOR COOLANT HEATER. COORDINATE WITH GENERATOR MANUFACTURER.
24. GENERATOR EMERGENCY STOP BUTTON. COORDINATE WITH GENERATOR MANUFACTURER.
25. GENERATOR ANNUNCIATOR PANEL. COORDINATE EXACT LOCATION WITH OWNER PRIOR TO ROUGH-IN.
26. PROVIDE JUNCTION BOX FOR EXTENSION OF EXISTING CIRCUITS TO BUILDING.
27. PROVIDE CONDUIT AND CONDUCTORS FOR EXTENSION OF EXISTING IRRIGATION TIMECLOCK CIRCUIT TO PANEL LE-16.
28. 3/4" EMPTY CONDUIT TO TIE IN TELECOM 104.
29. PROVIDE JUNCTION BOX AND 3/4" CONDUIT FOR FUTURE EXTENSION.



GENERAL NOTES - SYSTEMS

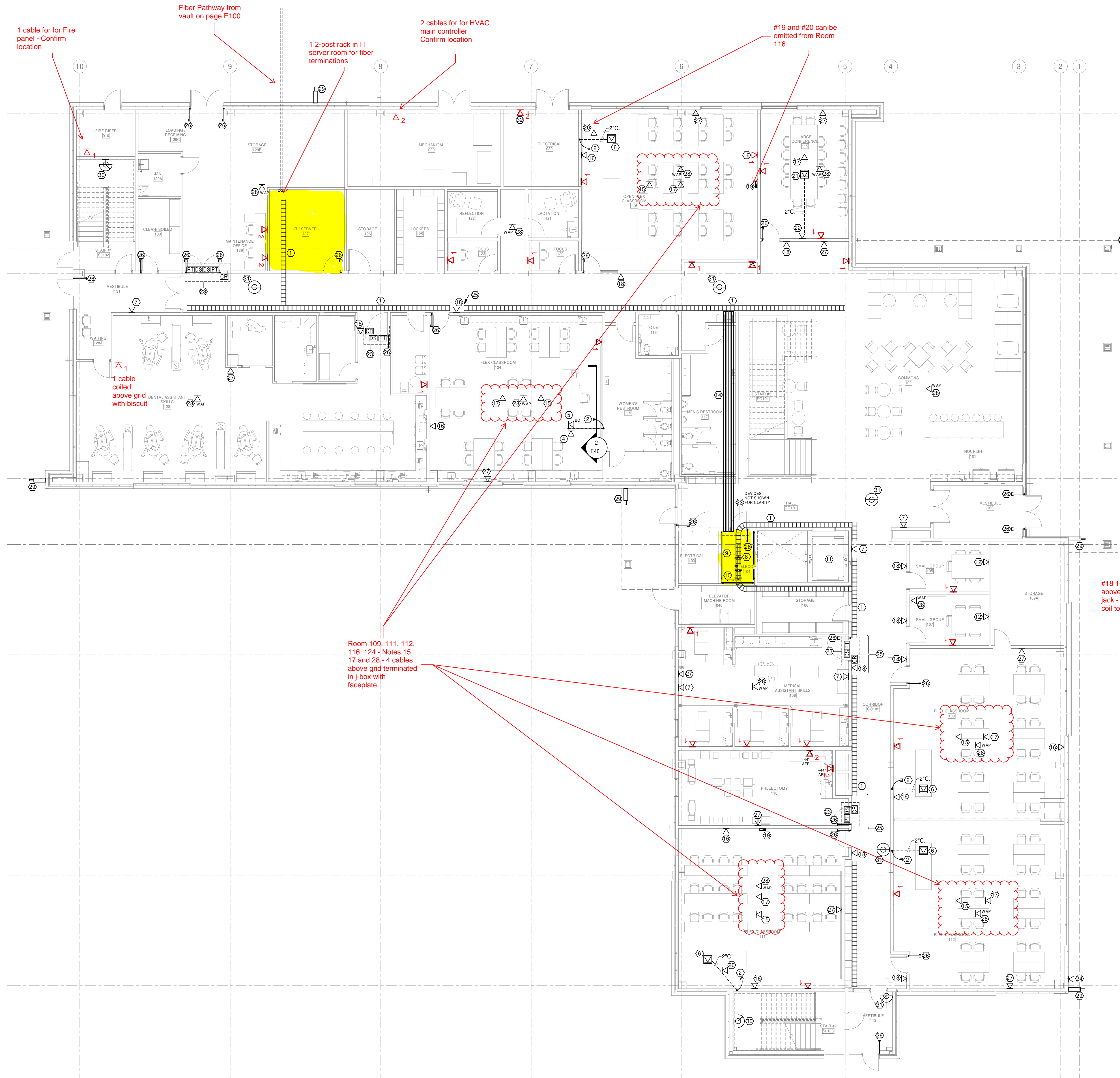
- A. COMPLY WITH LATEST ADOPTED NEC, NFPA 72 AND LATEST ADOPTED IBC/IFC.
- B. LABEL ALL COVER PLATES WITH PATCH PANEL IDENTIFICATION NUMBER ON FACE OF PLATE, SEE SPECIFICATIONS FOR ADDITIONAL INFORMATION.
- C. COORDINATE WALL MOUNTED DEVICE LOCATIONS WITH ARCHITECTURAL ELEVATIONS PRIOR TO ROUGH-IN.
- D. SEAL ALL PENETRATIONS OF RATED WALLS PER SPECIFICATIONS. SEE ARCHITECTURAL DRAWINGS FOR WALL RATINGS.
- E. ALL DATA/TELEPHONE DEVICES SHALL HAVE A #30, 2-1/8" DEEP BOX, 1-GANG MUDRING WITH 1" CONDUIT STUBBED ABOVE ACCESSIBLE CEILING SPACE, UNLESS NOTED OTHERWISE. ALL CONDUITS SHALL HAVE INSULATED THROAT BUSHINGS.
- F. PROVIDE PULLCORDS IN ALL DATA/TELEPHONE CONDUITS.
- G. ALL DATA/TELEPHONE CABLES TO BE FURNISHED AND INSTALLED BY OWNER'S LOW VOLTAGE CONTRACTOR.
- H. ALL DATA/TELEPHONE CABLES TO BE PLENUM-RATED AND CATE.
- I. ALL DATA/TELEPHONE DEVICES AND COVER PLATES TO BE FURNISHED AND INSTALLED BY OWNER'S LOW VOLTAGE CONTRACTOR.
- J. ALL DATA/TELEPHONE DEVICES TO HAVE 2 CAT 6 CABLES/JACKS PER DEVICE UNLESS NOTED OTHERWISE.
- K. PROVIDE AND INSTALL SOUND ISOLATION PADS FOR ALL JUNCTION BOXES LOCATED IN ACOUSTIC WALLS. REFER TO DETAILS ON ARCHITECTURAL DRAWINGS FOR REQUIREMENTS AND LOCATIONS.
- L. REFER TO DETAILS ON ARCHITECTURAL DRAWINGS FOR SEALING REQUIREMENTS FOR ACOUSTIC WALL AND FLOOR/CEILING PENETRATIONS.

FIRE ALARM SYSTEM IS A DELEGATED DESIGN SUBMITTAL BY THE FIRE ALARM CONTRACTOR.

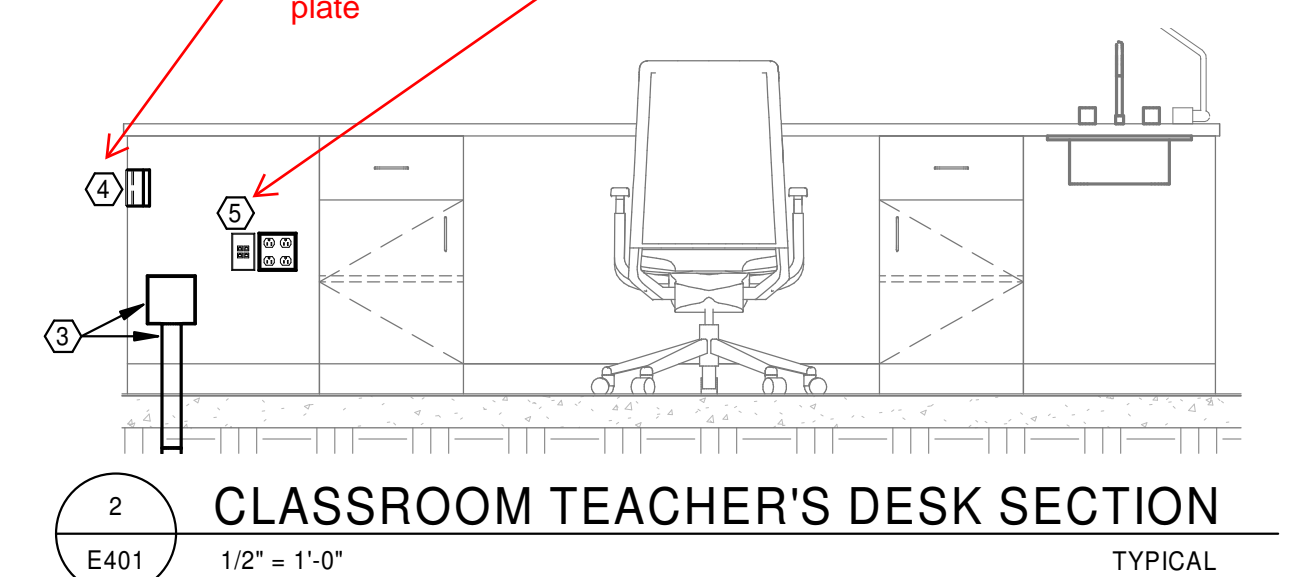
KEYNOTES

1. 12"x4" WIRE BASKET CABLE TRAY, BOTTOM MOUNTED AT 11'-0" AFF. PROVIDE ALL HARDWARE FOR WALL MOUNTING AND CEILING SUPPORT TRAPEZE FOR SECTIONS NOT ON WALL.
2. 2" C. STUBBED ABOVE ACCESSIBLE CEILING WITH PULLCORD AND INSULATED THROAT BUSHINGS.
3. #50, x 3/8" JUNCTION BOX WITH 1-1/2" CONDUIT TO ABOVE ACCESSIBLE CEILING. JUNCTION BOX MOUNTED IN CASEWORK FOR DATA CABLING. SEE DETAIL 2.
4. DATA JACK, MOUNTED HORIZONTALLY IN SIDE OF CASEWORK AT +26" AFF.
5. DATA JACK, MOUNTED IN CLASSROOM TEACHER'S DESK. SEE DETAIL 2.
6. FLOOR BOX. SEE E301 FOR ADDITIONAL INFORMATION.
7. TV BOX AT +72" AFF. SEE E301 FOR ADDITIONAL INFORMATION. PROVIDE 1" CONDUIT WITH PULLCORD AND INSULATED THROAT BUSHINGS TO ABOVE ACCESSIBLE CEILING SPACE.
8. DATA RACKS AND EQUIPMENT, PROVIDED AND INSTALLED BY OWNER'S LOW VOLTAGE CONTRACTOR.
9. PROVIDE 8H x 3/4" FIRE-RATED PLYWOOD TELECOM BACKBOARD ON ALL WALLS. SEE SPECIFICATIONS FOR ADDITIONAL INFORMATION.
10. TELECOMMUNICATIONS GROUND BAR. SEE SPECIFICATIONS FOR ADDITIONAL INFORMATION. PROVIDE #6GU GROUND IN 1/2" C. TO MAIN SERVICE GROUND BAR.
11. ELEVATOR PHONE CONNECTION. COORDINATE CONNECTION AND LOCATION WITH ELEVATOR MANUFACTURER/INSTALLER.
12. TV BOX AT +72" AFF AND JUNCTION BOX AT +18" AFF BELOW WITH 1" CONDUIT CONNECTING BOTH. SEE E301 FOR ADDITIONAL INFORMATION. PROVIDE 1" CONDUIT WITH PULLCORD AND INSULATED THROAT BUSHINGS TO ABOVE ACCESSIBLE CEILING SPACE.
13. NOTE NOT USED.
14. 4" CONDUITS FOR COMMUNICATION CABLING WITH PULLCORD AND INSULATED THROAT BUSHINGS. MOUNTED AT 8" AFF.
15. CEILING PROJECTOR LOCATION. EQUIPMENT AND CABLING BY OTHERS LOCATED ABOVE CEILING.
16. WALL MOUNTED CAMERA AT 6'-0" AFF. PROVIDE JUNCTION BOX AND 1/2" C. TO ABOVE ACCESSIBLE CEILING SPACE. COORDINATE LOCATION, HEIGHT AND ROUGH-IN REQUIREMENTS WITH OWNER PRIOR TO ROUGH-IN.
17. CEILING MOUNTED MICROPHONE. EQUIPMENT AND CABLING BY OTHERS LOCATED ABOVE CEILING.
18. ROOM SCHEDULER AT +42" AFF. PROVIDE 2-GANG JUNCTION BOX WITH 1/2" EMPTY CONDUIT WITH INSULATED THROAT BUSHINGS TO ABOVE ACCESSIBLE CEILING SPACE.
19. DATA ROUGH-IN LOCATION FOR REAR DISPLAY WALL BOX. PROVIDE 2" EMPTY CONDUIT WITH INSULATED THROAT BUSHINGS TO ABOVE ACCESSIBLE CEILING SPACE. COORDINATE BOX LOCATION WITH OWNER'S LOW VOLTAGE CONTRACTOR PRIOR TO ROUGH-IN.
20. DATA ROUGH-IN LOCATION FOR FRONT DISPLAY CEILING BOX.
21. FLOOR BOX. SEE E301 FOR ADDITIONAL INFORMATION.
22. TV BOX AT +72" AFF. SEE E301 FOR ADDITIONAL INFORMATION. PROVIDE 2" CONDUIT WITH PULLCORD AND INSULATED THROAT BUSHINGS TO ABOVE ACCESSIBLE CEILING SPACE AND TO FLOOR BOX.
23. ACCESS CONTROL EQUIPMENT, PROVIDED AND INSTALLED BY OTHERS. ELECTRICAL TO PROVIDE AND INSTALL CONDUIT AND JUNCTION BOXES. COORDINATE CONDUIT AND JUNCTION BOX LOCATIONS WITH ACCESS CONTROL INSTALLER AND DOOR HARDWARE CONTRACTOR PRIOR TO ROUGH-IN. SEE E307 FOR ADDITIONAL INFORMATION.
24. WP JUNCTION BOX FOR IRRIGATION COMMUNICATION WIRING. PROVIDE 1/2" EMPTY CONDUIT WITH INSULATED THROAT BUSHINGS TO ABOVE ACCESSIBLE CEILING SPACE.
25. THIS PORTION OF CABLE TRAY NOT SHOWN FOR CLARITY.
26. 3/4" EMPTY CONDUIT WITH INSULATED THROAT BUSHINGS FROM CENTER HINGE TO ABOVE ACCESSIBLE CEILING SPACE FOR ACCESS CONTROL WIRING.
27. PSE CLOCK AT +96" AFF. EQUIPMENT AND CABLING BY OTHERS.
28. WIRELESS ACCESS POINT, ABOVE CEILING, EQUIPMENT AND CABLING BY OTHERS.
29. EXTERIOR CAMERA, PROVIDED AND INSTALLED BY OTHERS. PROVIDE WP JUNCTION BOX AND 1/2" C. INTO BUILDING TO ABOVE ACCESSIBLE CEILING SPACE. COORDINATE LOCATION, HEIGHT AND ROUGH-IN REQUIREMENTS WITH OWNER PRIOR TO ROUGH-IN.
30. INTERIOR CAMERA, PROVIDED AND INSTALLED BY OTHERS. PROVIDE JUNCTION BOX AND 1/2" C. TO ABOVE ACCESSIBLE CEILING SPACE. COORDINATE LOCATION, HEIGHT AND ROUGH-IN REQUIREMENTS WITH OWNER PRIOR TO ROUGH-IN.
31. CEILING-MOUNTED INTERIOR CAMERA, PROVIDED AND INSTALLED BY OTHERS. COORDINATE LOCATION AND ROUGH-IN REQUIREMENTS WITH OWNER PRIOR TO ROUGH-IN.
32. DATA DEVICE FOR CONNECTION OF POWER METERING TO NETWORK. MOUNT AT 8'-0" AFF NEXT TO MSB.

Note J: All locations to have a single cable unless otherwise noted



- #4 2-Cables on side of console
- #5 6-Cables inside console
- #7 2-Cables for digital signage
- #8 See CWI cabling specs document
- #11 2-Cables Elevator Phone
- #12 2-cables for monitor and pc wall mounted
- #15 1-Cable terminated in j-box w/ wallplate
- #16 1-Cable for camera
- #17 2-Cable terminated in j-box w/ wallplate
- #18 1-Cable coiled above grid w/ rj45 jack - Long enough coil to reach floor.
- #19 4-Cables for wall mounted TV
- #20 4-Cables in ceiling mounted box
- #22 4-cables for TV
- #24 1-Cable for Irrig control
- #26 1-Cable coiled above grid with biscuit
- #27 1-Cable for POE clock - wallplate
- #28 1-Cable terminated in j-box w/ wallplate
- #29 1-Cable for Security Camera - Coiled inside with biscuit
- #30 1-Cable terminated in wall plate
- #31 1-Cable for Security Camera - Coiled above grid with biscuit
- #32 2-Cables terminated in wall plate
- #5 6-Cable inside cabinet
- #4 2-Cables in wall plate



GENERAL NOTES - SYSTEMS

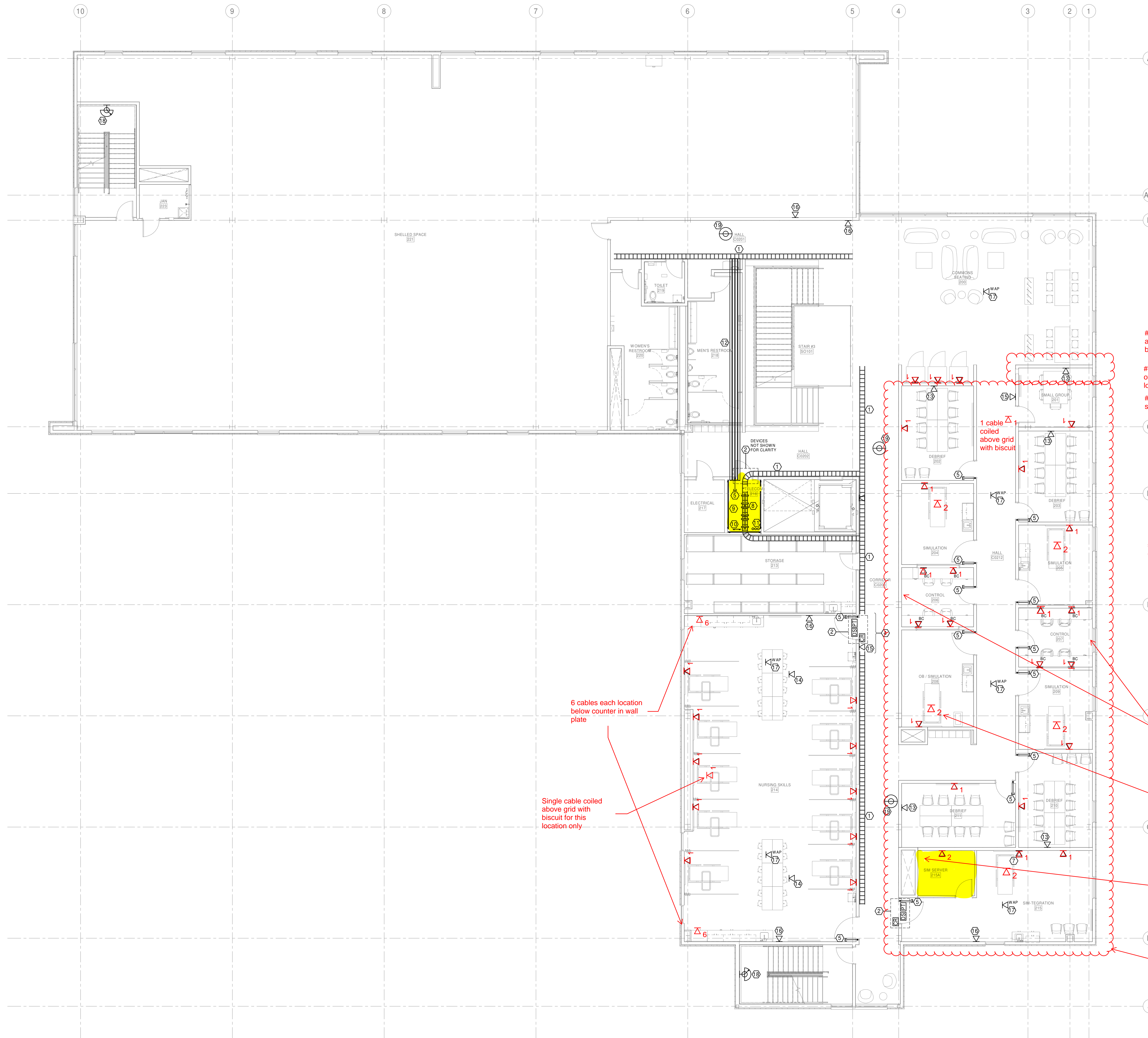
- A. COMPLY WITH LATEST ADOPTED NEC, NFPA 72 AND LATEST ADOPTED IBC/IFC.
- B. LABEL ALL COVER PLATES WITH PATCH PANEL IDENTIFICATION NUMBER ON FACE OF PLATE, SEE SPECIFICATIONS FOR ADDITIONAL INFORMATION.
- C. COORDINATE WALL MOUNTED DEVICE LOCATIONS WITH ARCHITECTURAL ELEVATIONS PRIOR TO ROUGH-IN.
- D. SEAL ALL PENETRATIONS OF RATED WALLS PER SPECIFICATIONS. SEE ARCHITECTURAL DRAWINGS FOR WALL RATINGS.
- E. ALL DATA/TELEPHONE DEVICES SHALL HAVE A #302, 2-1/8" DEEP BOX, 1-GANG MUDRING WITH 1" CONDUIT STUBBED ABOVE ACCESSIBLE CEILING SPACE, UNLESS NOTED OTHERWISE. ALL CONDUITS SHALL HAVE INSULATED THROAT BUSHINGS.
- F. PROVIDE PULLCORDS IN ALL DATA/TELEPHONE CONDUITS.
- G. **ALL DATA/TELEPHONE CABLES TO BE FURNISHED AND INSTALLED BY OWNER'S LOW VOLTAGE CONTRACTOR.**
- H. **ALL DATA/TELEPHONE CABLES TO BE PLENUM-RATED AND CATE FURNISHED AND INSTALLED BY OWNER'S LOW VOLTAGE CONTRACTOR.**
- I. **ALL DATA/TELEPHONE DEVICES AND COVER PLATES TO BE FURNISHED AND INSTALLED BY OWNER'S LOW VOLTAGE CONTRACTOR.**
- J. ALL DATA/TELEPHONE DEVICES TO HAVE 2 CAT 6 CABLES/JACKS PER DEVICE UNLESS NOTED OTHERWISE.
- K. PROVIDE AND INSTALL SOUND ISOLATION PADS FOR ALL JUNCTION BOXES LOCATED IN ACOUSTIC WALLS. REFER TO DETAILS ON ARCHITECTURAL DRAWINGS FOR REQUIREMENTS AND LOCATIONS.
- L. REFER TO DETAILS ON ARCHITECTURAL DRAWINGS FOR SEALING REQUIREMENTS FOR ACOUSTIC WALL AND FLOOR/CEILING PENETRATIONS.

FIRE ALARM SYSTEM IS A DELEGATED DESIGN SUBMITTAL BY THE FIRE ALARM CONTRACTOR.

KEYNOTES

- 1. 12"x4" WIRE BASKET CABLE TRAY, BOTTOM MOUNTED AT 11'-0" AFF. PROVIDE ALL HARDWARE FOR WALL MOUNTING AND CEILING SUPPORT TRAPEZE FOR SECTIONS NOT ON WALL.
- 2. ACCESS CONTROL EQUIPMENT, PROVIDED AND INSTALLED BY OTHERS. ELECTRICAL TO PROVIDE AND INSTALL CONDUIT AND JUNCTION BOXES. COORDINATE CONDUIT AND JUNCTION BOX LOCATIONS WITH ACCESS CONTROL INSTALLER AND DOOR HARDWARE CONTRACTOR PRIOR TO ROUGH-IN. SEE E007 FOR ADDITIONAL INFORMATION.
- 3. NOTE NOT USED.
- 4. THIS PORTION OF CABLE TRAY NOT SHOWN FOR CLARITY.
- 5. 3/4" EMPTY CONDUIT WITH INSULATED THROAT BUSHINGS FROM CENTER HINGE TO ABOVE ACCESSIBLE CEILING SPACE FOR ACCESS CONTROL WIRING.
- 6. NOTE NOT USED.
- 7. TV BOX AT +72" AFF. SEE E302 FOR ADDITIONAL INFORMATION. PROVIDE 1" CONDUIT WITH PULLCORD AND INSULATED THROAT BUSHINGS TO ABOVE ACCESSIBLE CEILING SPACE.
- 8. DATA RACKS AND EQUIPMENT, PROVIDED AND INSTALLED BY OWNER'S LOW VOLTAGE CONTRACTOR.
- 9. PROVIDE 3/4" x 3/4" FIRE-RATED PLYWOOD TELECOM BACKBOARD ON ALL WALLS. SEE SPECIFICATIONS FOR ADDITIONAL INFORMATION.
- 10. TELECOMMUNICATIONS GROUND BAR, SEE SPECIFICATIONS FOR ADDITIONAL INFORMATION. PROVIDE #60 GROUND IN 1/2" TO MAIN SERVICE GROUND BAR.
- 11. (3) 4" CONDUIT SLEEVES WITH INSULATED THROAT BUSHINGS THRU FLOOR.
- 12. (4) 4" CONDUITS FOR COMMUNICATION CABLING WITH PULLCORD AND INSULATED THROAT BUSHINGS, MOUNTED AT 11'-0" AFF.
- 13. TV BOX AT +72" AFF AND JUNCTION BOX AT +18" AFF BELOW WITH 1" CONDUIT CONNECTING BOTH. SEE E302 FOR ADDITIONAL INFORMATION. PROVIDE 1" CONDUIT WITH PULLCORD AND INSULATED THROAT BUSHINGS TO ABOVE ACCESSIBLE CEILING SPACE.
- 14. CEILING PROJECTOR LOCATION, EQUIPMENT AND CABLING BY OTHERS LOCATED ABOVE CEILING.
- 15. ROOM SCHEDULER AT +42" AFF. PROVIDE 2-GANG JUNCTION BOX WITH 1/2" EMPTY CONDUIT WITH INSULATED THROAT BUSHINGS TO ABOVE ACCESSIBLE CEILING SPACE.
- 16. PoE CLOCK AT +96" AFF. EQUIPMENT AND CABLING BY OTHERS.
- 17. WIRELESS ACCESS POINT, ABOVE CEILING, EQUIPMENT AND CABLING BY OTHERS.
- 18. INTERIOR CAMERA, PROVIDED AND INSTALLED BY OTHERS. PROVIDE JUNCTION BOX AND 1/2" TO ABOVE ACCESSIBLE CEILING SPACE. COORDINATE LOCATION, HEIGHT AND ROUGH-IN REQUIREMENTS WITH OWNER PRIOR TO ROUGH-IN.
- 19. CEILING MOUNTED INTERIOR CAMERA, PROVIDED AND INSTALLED BY OTHERS. COORDINATE LOCATION AND ROUGH-IN REQUIREMENTS WITH OWNER PRIOR TO ROUGH-IN.

Note J: All locations to have a single cable unless otherwise noted



#5 1- Cable coiled above grid with biscuit

#7 2- cables at head of each SIM bed 5 locations

#8 See CWI cabling specs document

#13 2- cables each debris room display and pc

#14 1- Cable coiled above grid terminated with biscuit

#15 1- Cable coiled above grid w/ r145 jack - Long enough coil to reach floor.

#16 1- Cable for POE clock - wallplate

#17 1- Cable for WAP coiled above grid with biscuit

#18 1- Cable in wallplate

#19 1- Cable for Security Camera - Coiled above grid with biscuit

1 cable for each control room for audio controls above grid RM# 206 207

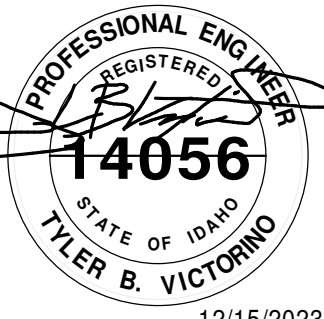
Each bed in SIM lab will need 2 cables coiled above grid and 1 cable in 16 AFF Rm 204 205 208 209 215

SIM Server Room - 2 post rack w/ vertical mgmt and pathway to above grid. 6 Copper cables back to 2nd floor telco.

Notes #5, 15, 16, 17, 19 pull back to telco RM 216. all other cables go back to SIM Server Rack

6 cables each location below counter in wall plate

Single cable coiled above grid with biscuit for this location only



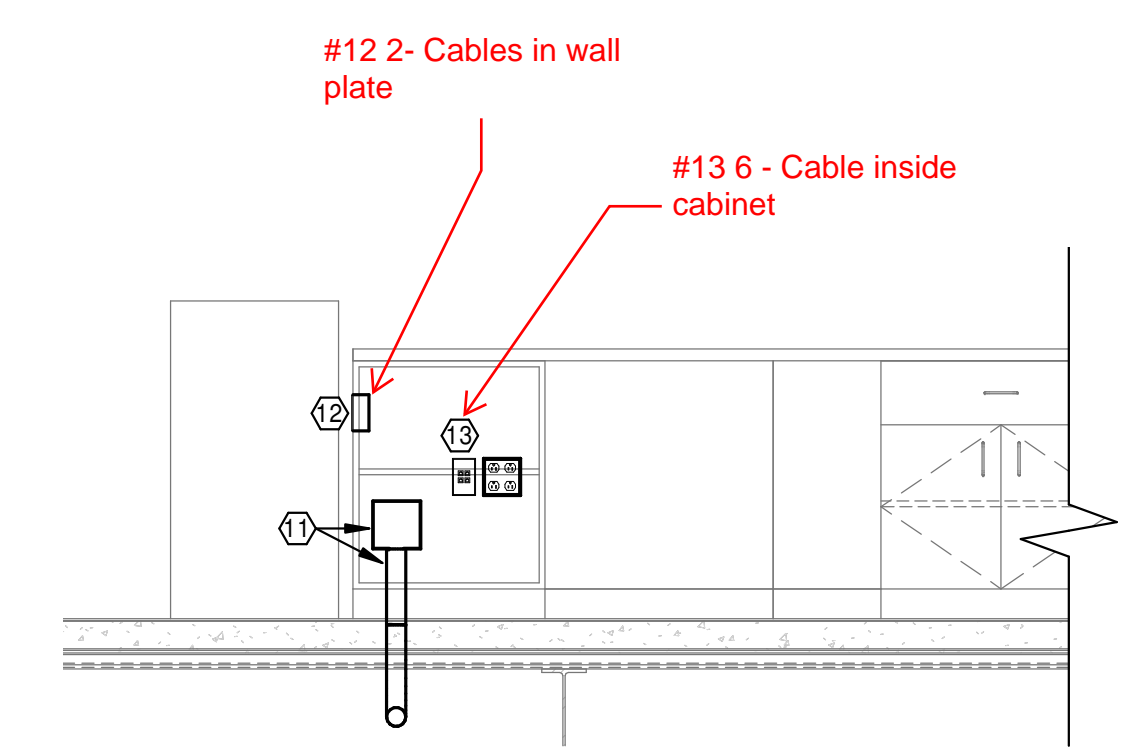
GENERAL NOTES - SYSTEMS

- A. COMPLY WITH LATEST ADOPTED NEC, NFPA 72 AND LATEST ADOPTED IBC/IFC.
- B. LABEL ALL COVER PLATES WITH PATCH PANEL IDENTIFICATION NUMBER ON FACE OF PLATE, SEE SPECIFICATIONS FOR ADDITIONAL INFORMATION.
- C. COORDINATE WALL MOUNTED DEVICE LOCATIONS WITH ARCHITECTURAL ELEVATIONS PRIOR TO ROUGH-IN.
- D. SEAL ALL PENETRATIONS OF RATED WALLS PER SPECIFICATIONS. SEE ARCHITECTURAL DRAWINGS FOR WALL RATINGS.
- E. ALL DATA TELEPHONE DEVICES SHALL HAVE A 4" SQ. 2-1/8" DEEP BOX, 1-GANG MUDRING WITH 1" CONDUIT STUBBED ABOVE ACCESSIBLE CEILING SPACE, UNLESS NOTED OTHERWISE. ALL CONDUITS SHALL HAVE INSULATED THROAT BUSHINGS.
- F. PROVIDE PULLCORDS IN ALL DATA TELEPHONE CONDUITS.
- G. ALL DATA TELEPHONE CABLES TO BE FURNISHED AND INSTALLED BY OWNER'S LOW VOLTAGE CONTRACTOR.
- H. ALL DATA TELEPHONE CABLES TO BE PLENUM-RATED AND CATE.
- I. ALL DATA TELEPHONE DEVICES AND COVER PLATES TO BE FURNISHED AND INSTALLED BY OWNER'S LOW VOLTAGE CONTRACTOR.
- J. ALL DATA TELEPHONE DEVICES TO HAVE 2 CAT 6 CABLES/JACKS PER DEVICE UNLESS NOTED OTHERWISE.
- K. PROVIDE AND INSTALL SOUND ISOLATION PADS FOR ALL JUNCTION BOXES LOCATED IN ACOUSTIC WALLS. REFER TO DETAILS ON ARCHITECTURAL DRAWINGS FOR REQUIREMENTS AND LOCATIONS. REFER TO DETAILS ON ARCHITECTURAL DRAWINGS FOR SEALING REQUIREMENTS FOR ACOUSTIC WALL AND FLOOR/CEILING PENETRATIONS.

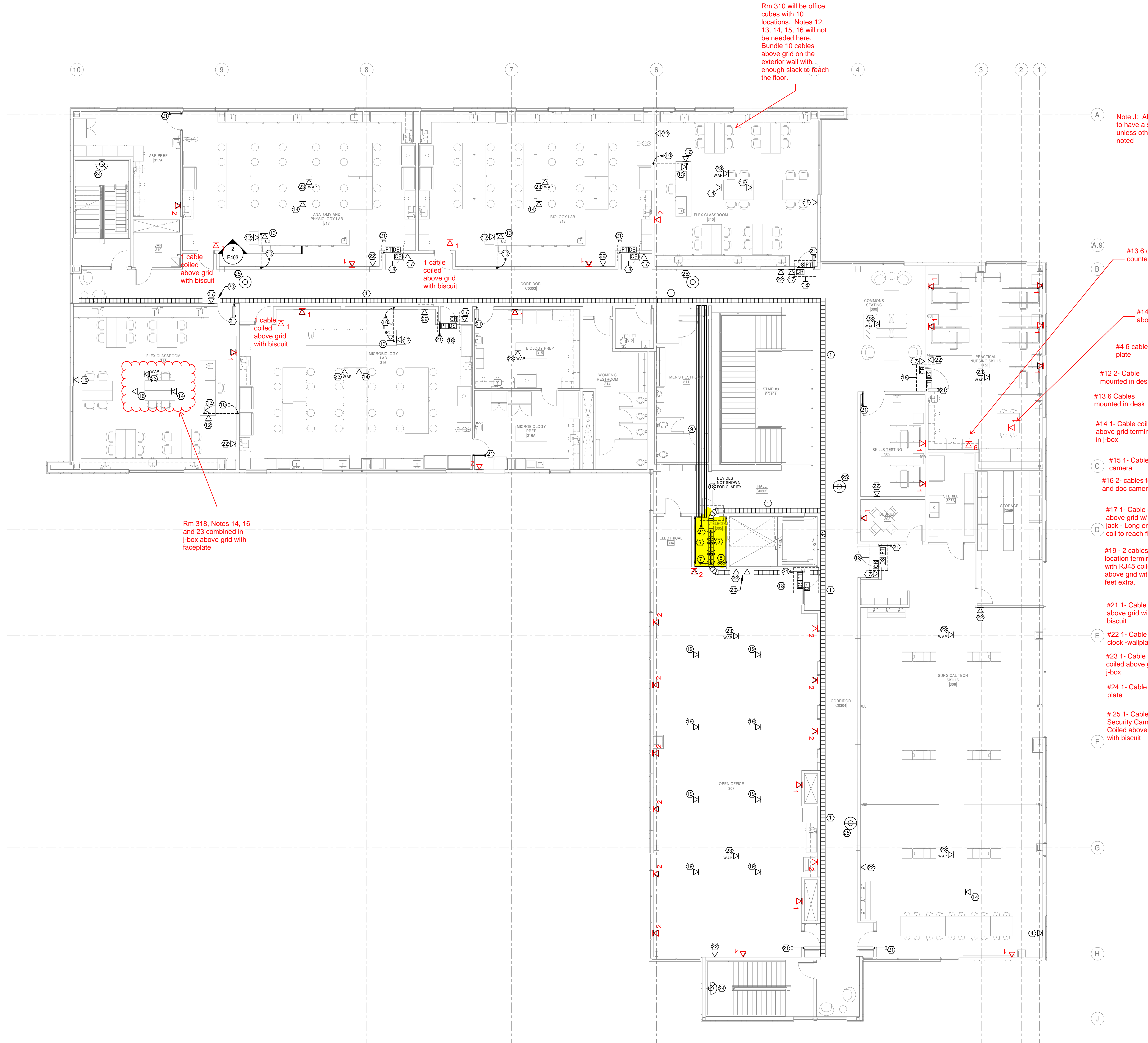
FIRE ALARM SYSTEM IS A DELEGATED DESIGN SUBMITTAL BY THE FIRE ALARM CONTRACTOR.

KEYNOTES

- 1. 12"x4" WIRE BASKET CABLE TRAY, BOTTOM MOUNTED AT 11'-0" AFF. PROVIDE ALL HARDWARE FOR WALL MOUNTING AND CEILING SUPPORT TRAPEZE FOR SECTIONS NOT ON WALL.
- 2. NOTE NOT USED.
- 3. NOTE NOT USED.
- 4. TV BOX AT 7'2" AFF. SEE E303 FOR ADDITIONAL INFORMATION. PROVIDE 1" CONDUIT WITH PULLCORD AND INSULATED THROAT BUSHINGS TO ABOVE ACCESSIBLE CEILING SPACE.
- 5. DATA RACKS AND EQUIPMENT PROVIDED AND INSTALLED BY OWNER'S LOW VOLTAGE CONTRACTOR.
- 6. PROVIDE 8H x 3/4" FIRE-RATED PLYWOOD TELECOM BACKBOARD ON ALL WALLS. SEE SPECIFICATIONS FOR ADDITIONAL INFORMATION.
- 7. TELECOMMUNICATIONS GROUND BAR. SEE SPECIFICATIONS FOR ADDITIONAL INFORMATION. PROVIDE #6CU GROUND IN 1/2" C. TO MAIN SERVICE GROUND BAR.
- 8. (3) 4" CONDUIT SLEEVES WITH INSULATED THROAT BUSHINGS THRU FLOOR.
- 9. (4) 4" CONDUITS FOR COMMUNICATION CABLING WITH PULLCORD AND INSULATED THROAT BUSHINGS. MOUNTED AT 11'-6" AFF.
- 10. 2" C. STUBBED ABOVE ACCESSIBLE CEILING WITH PULLCORD AND INSULATED THROAT BUSHINGS.
- 11. 6" SQ. x 3" D. JUNCTION BOX WITH 2" CONDUIT TO ABOVE ACCESSIBLE CEILING. JUNCTION BOX MOUNTED IN CASEWORK FOR DATA CABLING. SEE DETAIL 2.
- 12. DATA JACK, MOUNTED HORIZONTALLY IN SIDE OF CASEWORK AT +26" AFF.
- 13. DATA JACK, MOUNTED IN LAB TEACHER'S DESK. SEE DETAIL 2.
- 14. CEILING PROJECTOR LOCATION, EQUIPMENT AND CABLING BY OTHERS LOCATED ABOVE CEILING.
- 15. WALL MOUNTED CAMERA AT 5'-0" AFF. PROVIDE JUNCTION BOX AND 1/2" C. TO ABOVE ACCESSIBLE CEILING SPACE. COORDINATE LOCATION, HEIGHT AND ROUGH-IN REQUIREMENTS WITH OWNER PRIOR TO ROUGH-IN.
- 16. CEILING MOUNTED MICROPHONE, EQUIPMENT AND CABLING BY OTHERS LOCATED ABOVE CEILING.
- 17. ROOM SCHEDULER AT +42" AFF. PROVIDE 2-GANG JUNCTION BOX WITH 1/2" EMPTY CONDUIT WITH INSULATED THROAT BUSHINGS TO ABOVE ACCESSIBLE CEILING SPACE.
- 18. ACCESS CONTROL EQUIPMENT, PROVIDED AND INSTALLED BY OTHERS. ELECTRICAL TO PROVIDE AND INSTALL CONDUIT AND JUNCTION BOXES. COORDINATE CONDUIT AND JUNCTION BOX LOCATIONS WITH ACCESS CONTROL INSTALLER AND DOOR HARDWARE CONTRACTOR PRIOR TO ROUGH-IN. SEE E007 FOR ADDITIONAL INFORMATION.
- 19. FURNITURE DATA CONNECTION ABOVE CEILING. COORDINATE CONNECTION LOCATIONS WITH FURNITURE VENDOR.
- 20. THIS PORTION OF CABLE TRAY NOT SHOWN FOR CLARITY.
- 21. 3/4" EMPTY CONDUIT WITH INSULATED THROAT BUSHINGS FROM CENTER HINGE TO ABOVE ACCESSIBLE CEILING SPACE FOR ACCESS CONTROL WIRING.
- 22. PACE CLOCK AT +88" AFF. EQUIPMENT AND CABLING BY OTHERS.
- 23. WIRELESS ACCESS POINT, ABOVE CEILING, EQUIPMENT AND CABLING BY OTHERS.
- 24. INTERIOR CAMERA, PROVIDED AND INSTALLED BY OTHERS. PROVIDE JUNCTION BOX AND 1/2" C. TO ABOVE ACCESSIBLE CEILING SPACE. COORDINATE LOCATION, HEIGHT AND ROUGH-IN REQUIREMENTS WITH OWNER PRIOR TO ROUGH-IN.
- 25. CEILING-MOUNTED INTERIOR CAMERA, PROVIDED AND INSTALLED BY OTHERS. COORDINATE LOCATION AND ROUGH-IN REQUIREMENTS WITH OWNER PRIOR TO ROUGH-IN.



2 LAB TEACHER'S DESK SECTION
E403 1/2" = 1'-0" TYPICAL



1 THIRD FLOOR SPECIAL SYSTEMS PLAN
E403 1/8" = 1'-0"

