

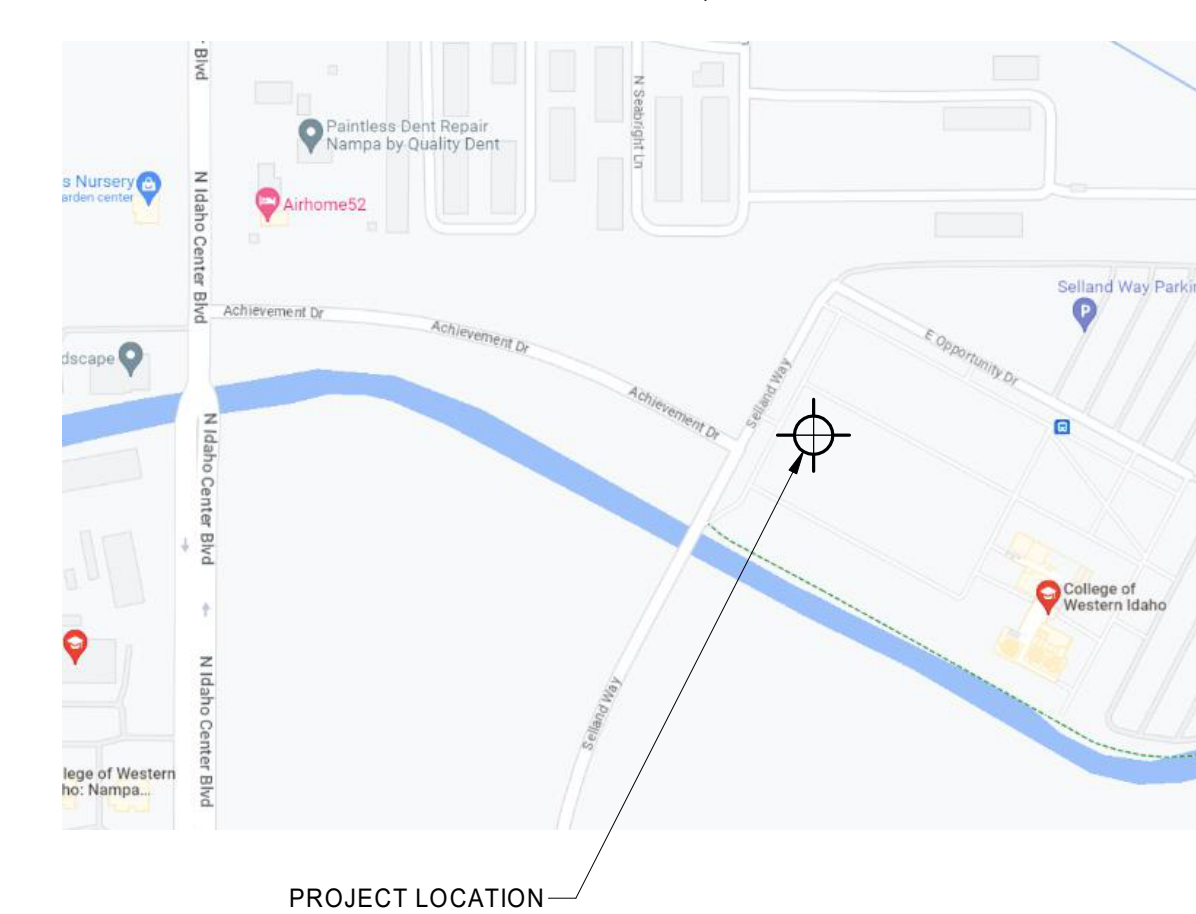
Exhibit A

December 15, 2023
 HEALTH SCIENCES BUILDING
 DPW22461_CWIHS
COLLEGE OF WESTERN IDAHO HEALTH SCIENCES
 CONSTRUCTION DOCUMENTS



PROJECT ADDRESS
 5500 East Opportunity Drive
 Nampa, ID 83687

VICINITY MAP: *Locator*



CONTRACTOR
 ESI INC
 3330 EAST LOUISE DRIVE #300
 MERIDIAN, IDAHO 83642
 208.362.3040
 CORY WILTSHIRE

ARCHITECT/ENGINEER
 CUSHING TERRELL
 800 W MAIN ST SUITE 800
 BOISE ID 83702
 208.336.4900
 TRACY BAKER

CIVIL AND LANDSCAPE
 THE LAND GROUP
 462 E SHORE DRIVE #100
 EAGLE ID 83616
 208.939.4041
 MATTHEW ADAMS

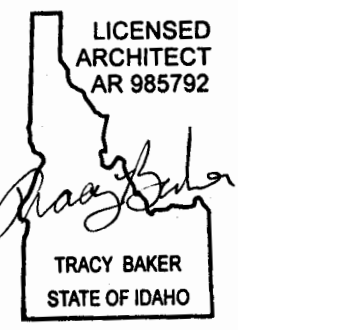
STRUCTURAL
 AXIOM PLLC
 121 N 9TH ST #401
 BOISE ID 83702
 208.639.4520
 WILL SLAVEN

MECHANICAL / PLUMBING
 CUSHING TERRELL
 800 W MAIN ST SUITE 800
 BOISE ID 83702
 208.336.4900
 LAURA RANKIN

ELECTRICAL
 CUSHINGTERRELL
 800 W MAIN ST SUITE 800
 BOISE ID 83702
 208.336.4900
 DAVE BURFEIND

SHEET INDEX

GENERAL	ARCHITECTURAL	MECHANICAL
G001 COVER SHEET	A5100 ARCHITECTURAL SITE PLAN & DETAILS	M001 MECHANICAL LEGENDS, NOTES, ABBREVI.
G101 FIRST FLOOR CODE PLAN AND ANALYSIS	A101 FIRST FLOOR PLAN	M002 MECHANICAL SCHEDULES
G102 SECOND FLOOR CODE PLAN	A102 SECOND FLOOR PLAN	M003 MECHANICAL SCHEDULES
G103 THIRD FLOOR CODE PLAN	A103 THIRD FLOOR PLAN	M004 MECHANICAL SCHEDULES
G200 ASSEMBLIES, UL RATING DETAIL	A110 INTERIOR PLAN DETAILS	M101 FIRST FLOOR HVAC
G201 UL FIRE RESISTANCE RATINGS	A120 ROOF PLAN	M102 SECOND FLOOR HVAC
G202 UL FIRE RESISTANCE RATINGS	A121 ENLARGED CANOPY PLANS	M103 THIRD FLOOR HVAC
G203 UL FIRE RESISTANCE RATINGS	A122 ENLARGED CANOPY PLANS	M104 ROOF HVAC
	A131 ROOF DETAILS	M201 FIRST FLOOR HYDRONIC PIPING PLAN
	A132 ROOF DETAILS	M202 SECOND FLOOR HYDRONIC PIPING PLAN
	A133 CANOPY SECTIONS AND DETAILS	M203 THIRD FLOOR HYDRONIC PIPING PLAN
CIVIL	A201 EXTERIOR ELEVATIONS	M300 ENLARGED MECHANICAL ROOM PLAN
C0.00 COVER AND NOTES	A202 EXTERIOR ELEVATIONS	M400 HEATING WATER SYSTEM DIAGRAM
C1.00 EXISTING CONDITIONS & DEMOLITION	A301 BUILDING SECTIONS	M402 MECHANICAL DETAILS
C2.00 SITE PLAN	A311 WALL SECTIONS	M403 MECHANICAL DETAILS
C2.10 LAYOUT PLAN	A312 WALL SECTIONS	M404 MECHANICAL DETAILS
C2.50 SITE DETAILS	A313 WALL SECTIONS	M409 HVAC DETAILS
C4.00 GRADING PLAN	A314 WALL SECTIONS	M500 MECHANICAL SYSTEM CONTROLS
C4.50 GRADING DETAILS	A315 WALL SECTIONS	M501 MECHANICAL SYSTEM CONTROLS
C5.00 DRAINAGE AND UTILITY PLAN	A316 WALL SECTIONS	M502 MECHANICAL SYSTEM CONTROLS
C5.50 DRAINAGE AND UTILITY DETAILS	A317 WALL SECTIONS	
	A321 EXTERIOR DETAILS	PLUMBING
LANDSCAPE	A322 EXTERIOR DETAILS	P001 PLUMBING SCHEDULES AND LEGENDS
L1.00 LANDSCAPE PLAN	A323 EXTERIOR DETAILS	P100 DWV FOUNDATION FLOOR PLAN
L1.50 LANDSCAPE DETAILS	A324 EXTERIOR DETAILS	P101 DWV FIRST FLOOR PLAN
L2.00 IRRIGATION PLAN	A401 ELEVATOR PLANS & SECTIONS	P102 DWV SECOND FLOOR PLAN
L2.50 IRRIGATION DETAIL	A402 NORTH STAIR PLANS & SECTIONS	P103 DWV THIRD FLOOR PLAN
	A403 SOUTH STAIR PLANS & SECTIONS	P104 ROOF PLUMBING PLAN
STRUCTURAL	A404 ELEVATOR AND STAIR DETAILS	P201 PLUMBING FIRST FLOOR PLAN
S001 STRUCTURAL COVER SHEET	A405 GRAND STAIR PLANS & SECTIONS	P202 PLUMBING SECOND FLOOR PLAN
S002 GENERAL NOTES	A406 GRAND STAIR DETAILS	P203 PLUMBING THIRD FLOOR PLAN
S003 GENERAL NOTES	A501 FIRST FLOOR FINISH PLAN	P301 ENLARGED DWV PLANS
S005 LOADING PLANS	A502 SECOND FLOOR FINISH PLAN	P302 ENLARGED PLUMBING PLANS
S100 FOUNDATION DIMENSION PLAN	A503 THIRD FLOOR FINISH PLAN	P303 ENLARGED MECHANICAL 112 PLUMBING PLANS
S101 FOUNDATION PLAN	A504 FINISH MATERIAL LIST	P401 PLUMBING DETAILS
S111 LEVEL 2 FRAMING PLAN	A601 DOOR SCHEDULE	P402 PLUMBING DETAILS
S112 LEVEL 3 FRAMING PLAN	A602 WINDOW ELEVATIONS	P403 PLUMBING DETAILS
S113 ROOF FRAMING PLAN	A603 WINDOW ELEVATIONS	
S201 BRACED FRAME ELEVATIONS	A701 ENLARGED PLANS / INTERIOR ELEVATIONS	ELECTRICAL
S202 BRACED FRAME ELEVATIONS	A702 ENLARGED PLANS / INTERIOR ELEVATIONS	E001 ELECTRICAL LEGENDS
S251 BRACED FRAME DETAILS	A703 ENLARGED PLANS / INTERIOR ELEVATIONS	E002 ONE-LINE DIAGRAM
S401 ENLARGED CANOPY PLANS	A704 ENLARGED PLANS / INTERIOR ELEVATIONS	E003 PANEL SCHEDULES
S402 ENLARGED ELEVATOR PLANS	A705 ENLARGED PLANS / INTERIOR ELEVATIONS	E004 PANEL SCHEDULES
S403 ENLARGED STAIR FRAMING PLANS	A706 ENLARGED PLANS / INTERIOR ELEVATIONS	E005 PANEL SCHEDULES
S404 GRAND STAIR DETAILS	A707 ENLARGED PLANS / INTERIOR ELEVATIONS	E006 LIGHTING SCHEDULES
S501 CONCRETE DETAILS	A708 ENLARGED PLANS / INTERIOR ELEVATIONS	E007 ELECTRICAL DETAILS
S502 CONCRETE DETAILS	A801 INTERIOR ELEVATIONS / CASEWORK DETAILS	E100 ELECTRICAL SITE PLAN
S503 CONCRETE DETAILS	A802 INTERIOR ELEVATIONS / CASEWORK DETAILS	E201 FIRST FLOOR LIGHTING PLAN
S531 STEEL DETAILS	A803 INTERIOR ELEVATIONS / CASEWORK DETAILS	E202 SECOND FLOOR LIGHTING PLAN
S532 STEEL DETAILS	A804 INTERIOR ELEVATIONS	E203 THIRD FLOOR LIGHTING PLAN
S533 STEEL DETAILS	A805 INTERIOR ELEVATIONS	E301 FIRST FLOOR POWER PLAN
S534 STEEL DETAILS	A901 FIRST FLOOR REFLECTED CEILING PLAN	E302 SECOND FLOOR POWER PLAN
S601 CONCRETE SCHEDULES	A902 SECOND FLOOR REFLECTED CEILING PLAN	E303 THIRD FLOOR POWER PLAN
S631 STEEL SCHEDULES	A903 THIRD FLOOR REFLECTED CEILING PLAN	E304 ROOF POWER PLAN
S700 OVERALL SECTIONS AND ELEVATIONS		E401 FIRST FLOOR SPECIAL SYSTEMS PLAN
S701 ELEVATIONS		E402 SECOND FLOOR SPECIAL SYSTEMS PLAN
S702 ELEVATIONS		E403 THIRD FLOOR SPECIAL SYSTEMS PLAN
S703 SECTIONS		
S704 SECTIONS		
S705 SECTIONS		
S771 COLD FORMED DETAILS		
S772 COLD FORMED DETAILS		
S773 COLD FORMED DETAILS		



© 2023 | ALL RIGHTS RESERVED

CONSTRUCTION DOCUMENTS

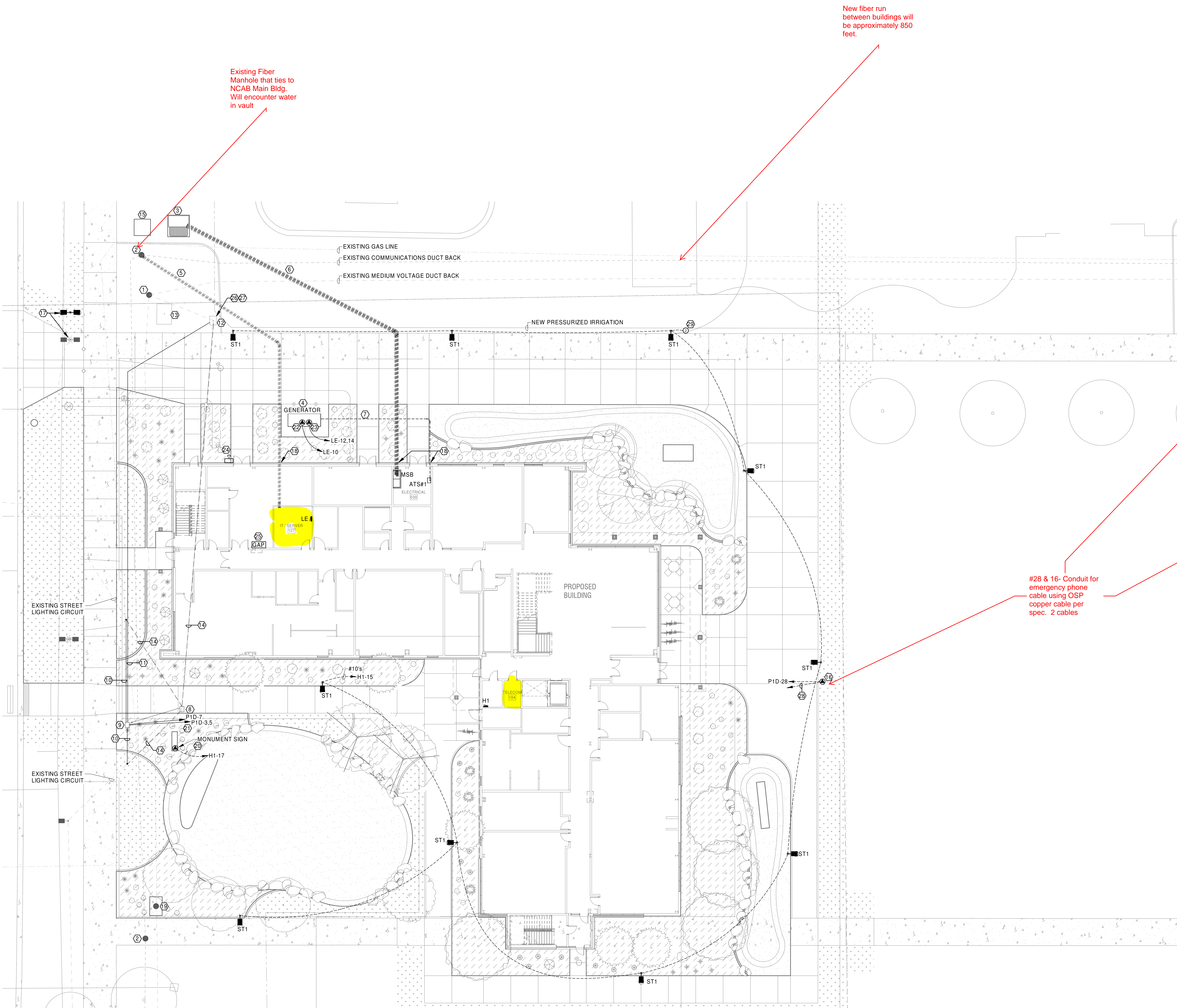
December 15, 2023
 PROJ.# | DPW22461_CWIHS
 DESIGNED BY | DEESE
 DRAWN BY | LAST NAME
 REVIEWED BY | BAKER
 REVISIONS

GENERAL NOTES - SITE

- A. COMPLY WITH LATEST ADOPTED NEC AND APPLICABLE CODES/STANDARDS.
- B. SHARED NEUTRALS ARE NOT ALLOWED FOR SINGLE PHASE BRANCH CIRCUITS.
- C. ALL SITE CONDUITS TO BE 3/4" MINIMUM.
- D. ALL SITE CONDUITS TO BE FURNISHED WITH PULLCORDS.
- E. ALL SITE CONDUCTORS TO BE #10 CU MINIMUM.

KEYNOTES

1. EXISTING MEDIUM VOLTAGE POWER MANHOLE MH#13.
2. EXISTING FIBER/TELECOM MANHOLE.
3. NEW UTILITY TRANSFORMER, INSTALLED UNDER SEPERATE CONTRACT.
4. NEW NATURAL GAS GENERATOR. SEE ONE-LINE DIAGRAM AND SPECIFICATIONS FOR ADDITIONAL INFORMATION.
5. (2) 4" CONDUITS WITH COMMUNICATION BENDS. COORDINATE ROUTING AND DEPTH WITH EXISTING UNDERGROUND UTILITIES.
6. SECONDARY POWER FEEDER. SEE ONE-LINE DIAGRAM FOR ADDITIONAL INFORMATION. COORDINATE ROUTING AND DEPTH WITH EXISTING UNDERGROUND UTILITIES.
7. GENERATOR POWER FEEDER. SEE ONE-LINE DIAGRAM FOR ADDITIONAL INFORMATION. COORDINATE ROUTING AND DEPTH WITH EXISTING UNDERGROUND UTILITIES.
8. RELOCATE EXISTING STREET LIGHTING PULLBOX AS SHOWN.
9. RELOCATED STREET LIGHTING PULLBOX.
10. INTERCEPT EXISTING STREET LIGHTING CIRCUIT AND EXTEND TO NEW PULLBOX LOCATION.
11. NEW 2" CONDUIT AND CONDUCTORS FOR STREET LIGHTING CIRCUITS TO EXISTING PANELBOARD TO TEMPORARY POWER STREET LIGHTING DURING BUILDING CONSTRUCTION.
12. EXISTING STREET LIGHTING PANELBOARD ENCLOSURE. PANELBOARD TO BE REMOVED AND SALVAGED TO OWNER ONCE ALL CIRCUITS FROM PANELBOARD HAVE BEEN EXTENDED AND ENERGIZED.
13. EXISTING PAD MOUNT TRANSFORMER. TRANSFORMER TO BE REMOVED AND SALVAGED TO OWNER ONCE ALL CIRCUITS FROM PANELBOARD HAVE BEEN EXTENDED AND ENERGIZED.
14. EXISTING STREET LIGHTING CIRCUITS TO BE REMOVED AND RE-ROUTED/EXTENDED IN NEW CONDUIT (NOTES 10 & 11).
15. NEW MEDIUM VOLTAGE SWITCH, INSTALLED UNDER SEPERATE CONTRACT.
16. EMERGENCY PHONE TOWER. TALKPHONE ETP-MTR OR APPROVED EQUAL COORDINATE SPECIFICATION WITH OWNER PRIOR TO ORDERING. PROVIDE CONCRETE FOUNDATION PER INSTALLATION INSTRUCTIONS.
17. EXISTING STREET LIGHT POLE TO BE RELOCATED 10'-0". PROVIDE NEW POLE BASE AND RECONNECT TO EXISTING LIGHTING CIRCUIT. ROUTE CONDUITS BELOW STRUCTURAL FOOTINGS. COORDINATE WITH STRUCTURAL DRAWINGS FOR MINIMUM DEPTH BELOW FOOTINGS.
19. EXISTING MEDIUM VOLTAGE POWER MANHOLE MH#14. THIS MANHOLE WILL BE USED TO PROVIDE POWER FOR FUTURE BUILDING EXPANSION.
20. PROVIDE ACUITY BRANDS (SBOR 10 NA G2 FIXTURE MOUNTED SENSOR FOR MONUMENT SIGN CONTROL. CONNECT PER MANUFACTURERS INSTALLATION DIAGRAM.
21. NEW 2" CONDUIT AND EXTEND EXISTING CONDUCTORS FOR STREET AND BRIDGE LIGHTING CIRCUITS. ENERGIZE CIRCUITS ONCE PERMANENT BUILDING POWER HAS BEEN ESTABLISHED.
22. GENERATOR BATTERY CHARGER. COORDINATE WITH GENERATOR MANUFACTURER.
23. GENERATOR COOLANT HEATER. COORDINATE WITH GENERATOR MANUFACTURER.
24. GENERATOR EMERGENCY STOP BUTTON. COORDINATE WITH GENERATOR MANUFACTURER.
25. GENERATOR ANNUNCIATOR PANEL. COORDINATE EXACT LOCATION WITH OWNER PRIOR TO ROUGH-IN.
26. PROVIDE JUNCTION BOX FOR EXTENSION OF EXISTING CIRCUITS TO BUILDING.
27. PROVIDE CONDUIT AND CONDUCTORS FOR EXTENSION OF EXISTING IRRIGATION TIMECLOCK CIRCUIT TO PANEL LE-16.
28. 3/4" EMPTY CONDUIT TO TIE IN TELECOM 104.
29. PROVIDE JUNCTION BOX AND 3/4" CONDUIT FOR FUTURE EXTENSION.



1 ELECTRICAL SITE PLAN
E100 1/16" = 1'-0"



HEALTH SCIENCES BUILDING
DPW22461_CWHS
COLLEGE OF WESTERN IDAHO HEALTH SCIENCES



© 2023 | ALL RIGHTS RESERVED

CONSTRUCTION DOCUMENTS

December 15, 2023
PROJ.# DPW22461_CWHS
DESIGNED BY | BURFEND
DRAWN BY | BURFEND
REVIEWED BY | VICTORINO
REVISIONS

ELECTRICAL SITE PLAN

E100

GENERAL NOTES - SYSTEMS

- A. COMPLY WITH LATEST ADOPTED NEC, NFPA 72 AND LATEST ADOPTED IBC/IFC.
- B. LABEL ALL COVER PLATES WITH PATCH PANEL IDENTIFICATION NUMBER ON FACE OF PLATE, SEE SPECIFICATIONS FOR ADDITIONAL INFORMATION.
- C. COORDINATE WALL MOUNTED DEVICE LOCATIONS WITH ARCHITECTURAL ELEVATIONS PRIOR TO ROUGH-IN.
- D. SEAL ALL PENETRATIONS OF RATED WALLS PER SPECIFICATIONS. SEE ARCHITECTURAL DRAWINGS FOR WALL RATINGS.
- E. ALL DATA/TELEPHONE DEVICES SHALL HAVE A #30, 2-1/8" DEEP BOX, 1-GANG MUDRING WITH 1" CONDUIT STUBBED ABOVE ACCESSIBLE CEILING SPACE, UNLESS NOTED OTHERWISE. ALL CONDUITS SHALL HAVE INSULATED THROAT BUSHINGS.
- F. PROVIDE PULLCORDS IN ALL DATA/TELEPHONE CONDUITS.
- G. ALL DATA/TELEPHONE CABLES TO BE FURNISHED AND INSTALLED BY OWNER'S LOW VOLTAGE CONTRACTOR.
- H. ALL DATA/TELEPHONE CABLES TO BE PLENUM-RATED AND CATE.
- I. ALL DATA/TELEPHONE DEVICES AND COVER PLATES TO BE FURNISHED AND INSTALLED BY OWNER'S LOW VOLTAGE CONTRACTOR.
- J. ALL DATA/TELEPHONE DEVICES TO HAVE 2 CAT 6 CABLES/JACKS PER DEVICE UNLESS NOTED OTHERWISE.
- K. PROVIDE AND INSTALL SOUND ISOLATION PADS FOR ALL JUNCTION BOXES LOCATED IN ACOUSTIC WALLS. REFER TO DETAILS ON ARCHITECTURAL DRAWINGS FOR REQUIREMENTS AND LOCATIONS.
- L. REFER TO DETAILS ON ARCHITECTURAL DRAWINGS FOR SEALING REQUIREMENTS FOR ACOUSTIC WALL AND FLOOR/CEILING PENETRATIONS.

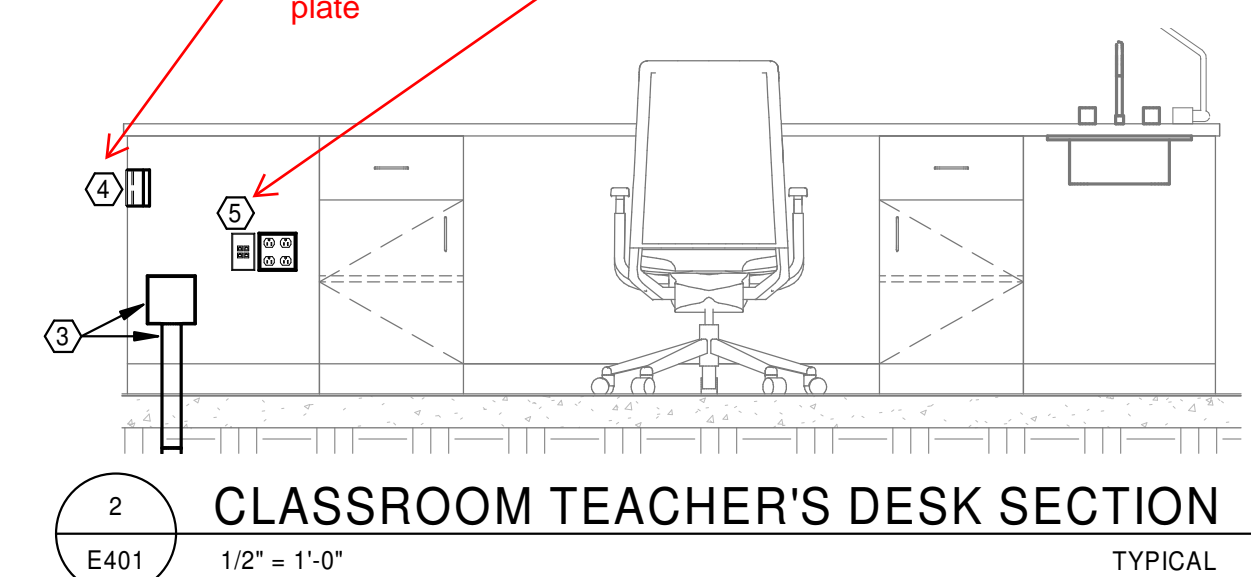
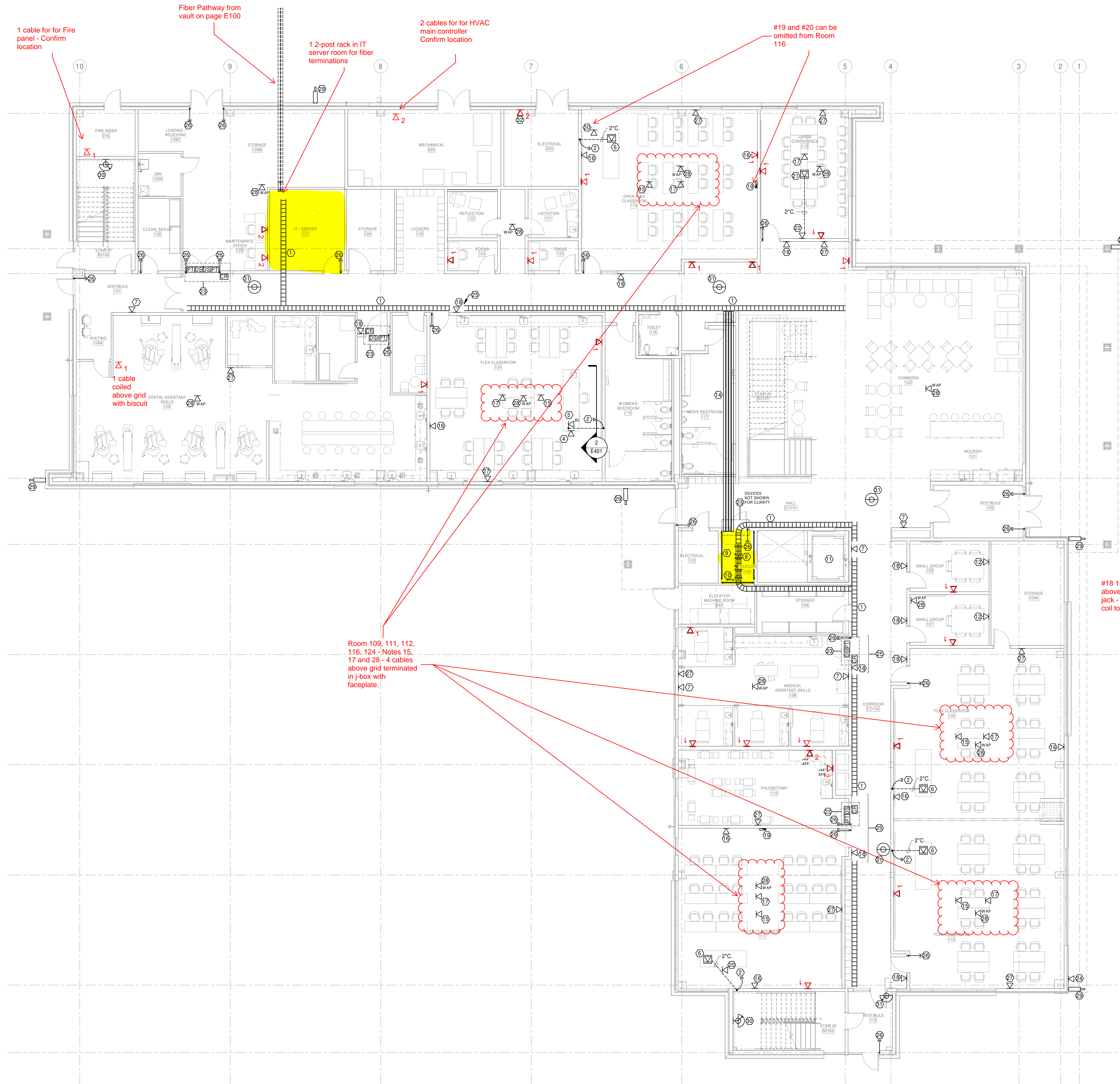
FIRE ALARM SYSTEM IS A DELEGATED DESIGN SUBMITTAL BY THE FIRE ALARM CONTRACTOR.

KEYNOTES

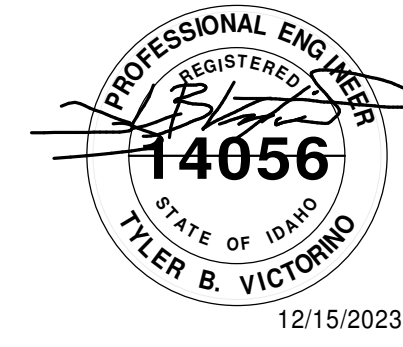
1. 12"x4" WIRE BASKET CABLE TRAY, BOTTOM MOUNTED AT 11'-0" AFF. PROVIDE ALL HARDWARE FOR WALL MOUNTING AND CEILING SUPPORT TRAPEZE FOR SECTIONS NOT ON WALL.
2. 2" C. STUBBED ABOVE ACCESSIBLE CEILING WITH PULLCORD AND INSULATED THROAT BUSHINGS.
3. #50, x 3/8" JUNCTION BOX WITH 1-1/2" CONDUIT TO ABOVE ACCESSIBLE CEILING. JUNCTION BOX MOUNTED IN CASEWORK FOR DATA CABLING. SEE DETAIL 2.
4. DATA JACK, MOUNTED HORIZONTALLY IN SIDE OF CASEWORK AT +26" AFF.
5. DATA JACK, MOUNTED IN CLASSROOM TEACHER'S DESK. SEE DETAIL 2.
6. FLOOR BOX. SEE E301 FOR ADDITIONAL INFORMATION.
7. TV BOX AT +72" AFF. SEE E301 FOR ADDITIONAL INFORMATION. PROVIDE 1" CONDUIT WITH PULLCORD AND INSULATED THROAT BUSHINGS TO ABOVE ACCESSIBLE CEILING SPACE.
8. DATA RACKS AND EQUIPMENT, PROVIDED AND INSTALLED BY OWNER'S LOW VOLTAGE CONTRACTOR.
9. PROVIDE 8H x 3/4" FIRE-RATED PLYWOOD TELECOM BACKBOARD ON ALL WALLS. SEE SPECIFICATIONS FOR ADDITIONAL INFORMATION.
10. TELECOMMUNICATIONS GROUND BAR. SEE SPECIFICATIONS FOR ADDITIONAL INFORMATION. PROVIDE #6GU GROUND IN 1/2" C. TO MAIN SERVICE GROUND BAR.
11. ELEVATOR PHONE CONNECTION. COORDINATE CONNECTION AND LOCATION WITH ELEVATOR MANUFACTURER/INSTALLER.
12. TV BOX AT +72" AFF AND JUNCTION BOX AT +18" AFF BELOW WITH 1" CONDUIT CONNECTING BOTH. SEE E301 FOR ADDITIONAL INFORMATION. PROVIDE 1" CONDUIT WITH PULLCORD AND INSULATED THROAT BUSHINGS TO ABOVE ACCESSIBLE CEILING SPACE.
13. NOTE NOT USED.
14. 4" CONDUITS FOR COMMUNICATION CABLING WITH PULLCORD AND INSULATED THROAT BUSHINGS. MOUNTED AT 11'-0" AFF.
15. CEILING PROJECTOR LOCATION. EQUIPMENT AND CABLING BY OTHERS LOCATED ABOVE CEILING.
16. WALL MOUNTED CAMERA AT 6'-0" AFF. PROVIDE JUNCTION BOX AND 1/2" C. TO ABOVE ACCESSIBLE CEILING SPACE. COORDINATE LOCATION, HEIGHT AND ROUGH-IN REQUIREMENTS WITH OWNER PRIOR TO ROUGH-IN.
17. CEILING MOUNTED MICROPHONE. EQUIPMENT AND CABLING BY OTHERS LOCATED ABOVE CEILING.
18. ROOM SCHEDULER AT +42" AFF. PROVIDE 2-GANG JUNCTION BOX WITH 1/2" EMPTY CONDUIT WITH INSULATED THROAT BUSHINGS TO ABOVE ACCESSIBLE CEILING SPACE.
19. DATA ROUGH-IN LOCATION FOR REAR DISPLAY WALL BOX. PROVIDE 2" EMPTY CONDUIT WITH INSULATED THROAT BUSHINGS TO ABOVE ACCESSIBLE CEILING SPACE. COORDINATE BOX LOCATION WITH OWNER'S LOW VOLTAGE CONTRACTOR PRIOR TO ROUGH-IN.
20. DATA ROUGH-IN LOCATION FOR FRONT DISPLAY CEILING BOX.
21. FLOOR BOX. SEE E301 FOR ADDITIONAL INFORMATION.
22. TV BOX AT +72" AFF. SEE E301 FOR ADDITIONAL INFORMATION. PROVIDE 2" CONDUIT WITH PULLCORD AND INSULATED THROAT BUSHINGS TO ABOVE ACCESSIBLE CEILING SPACE AND TO FLOOR BOX.
23. ACCESS CONTROL EQUIPMENT, PROVIDED AND INSTALLED BY OTHERS. ELECTRICAL TO PROVIDE AND INSTALL CONDUIT AND JUNCTION BOXES. COORDINATE CONDUIT AND JUNCTION BOX LOCATIONS WITH ACCESS CONTROL INSTALLER AND DOOR HARDWARE CONTRACTOR PRIOR TO ROUGH-IN. SEE E307 FOR ADDITIONAL INFORMATION.
24. WP JUNCTION BOX FOR IRRIGATION COMMUNICATION WIRING. PROVIDE 1/2" EMPTY CONDUIT WITH INSULATED THROAT BUSHINGS TO ABOVE ACCESSIBLE CEILING SPACE.
25. THIS PORTION OF CABLE TRAY NOT SHOWN FOR CLARITY.
26. 3/4" EMPTY CONDUIT WITH INSULATED THROAT BUSHINGS FROM CENTER HINGE TO ABOVE ACCESSIBLE CEILING SPACE FOR ACCESS CONTROL WIRING.
27. PSE CLOCK AT +96" AFF. EQUIPMENT AND CABLING BY OTHERS.
28. WIRELESS ACCESS POINT, ABOVE CEILING, EQUIPMENT AND CABLING BY OTHERS.
29. EXTERIOR CAMERA, PROVIDED AND INSTALLED BY OTHERS. PROVIDE WP JUNCTION BOX AND 1/2" C. INTO BUILDING TO ABOVE ACCESSIBLE CEILING SPACE. COORDINATE LOCATION, HEIGHT AND ROUGH-IN REQUIREMENTS WITH OWNER PRIOR TO ROUGH-IN.
30. INTERIOR CAMERA, PROVIDED AND INSTALLED BY OTHERS. PROVIDE JUNCTION BOX AND 1/2" C. TO ABOVE ACCESSIBLE CEILING SPACE. COORDINATE LOCATION, HEIGHT AND ROUGH-IN REQUIREMENTS WITH OWNER PRIOR TO ROUGH-IN.
31. CEILING-MOUNTED INTERIOR CAMERA, PROVIDED AND INSTALLED BY OTHERS. COORDINATE LOCATION AND ROUGH-IN REQUIREMENTS WITH OWNER PRIOR TO ROUGH-IN.
32. DATA DEVICE FOR CONNECTION OF POWER METERING TO NETWORK. MOUNT AT 8'-0" AFF NEXT TO MSB.

- #4 2-Cables on side of console
- #5 6-Cables inside console
- #7 2-Cables for digital signage
- #8 See CWI cabling specs document
- #11 2-Cables Elevator Phone
- #12 2-cables for monitor and pc wall mounted
- #15 1-Cable terminated in j-box w/ wallplate
- #16 1-Cable for camera
- #17 2-Cable terminated in j-box w/ wallplate
- #18 1-Cable coiled above grid w/ rj45 jack - Long enough coil to reach floor.
- #19 4-Cables for wall mounted TV
- #20 4-Cables in ceiling mounted box
- #22 4-cables for TV
- #24 1-Cable for Irrig control
- #26 1-Cable coiled above grid with biscuit
- #27 1-Cable for POE clock - wallplate
- #28 1-Cable terminated in j-box w/ wallplate
- #29 1-Cable for Security Camera - Coiled inside with biscuit
- #30 1-Cable terminated in wall plate
- #31 1-Cable for Security Camera - Coiled above grid with biscuit
- #32 2-Cables terminated in wall plate
- #5 6-Cable inside cabinet
- #4 2-Cables in wall plate

Note J: All locations to have a single cable unless otherwise noted



HEALTH SCIENCES BUILDING
DPW22461_CWHIS
COLLEGE OF WESTERN IDAHO HEALTH SCIENCES



12/15/2023

CONSTRUCTION DOCUMENTS

December 15, 2023
PROJ.# DPW22461_CWHIS
DESIGNED BY | BURFEND
DRAWN BY | BURFEND
REVIEWED BY | VICTORINO
REVISIONS

GENERAL NOTES - SYSTEMS

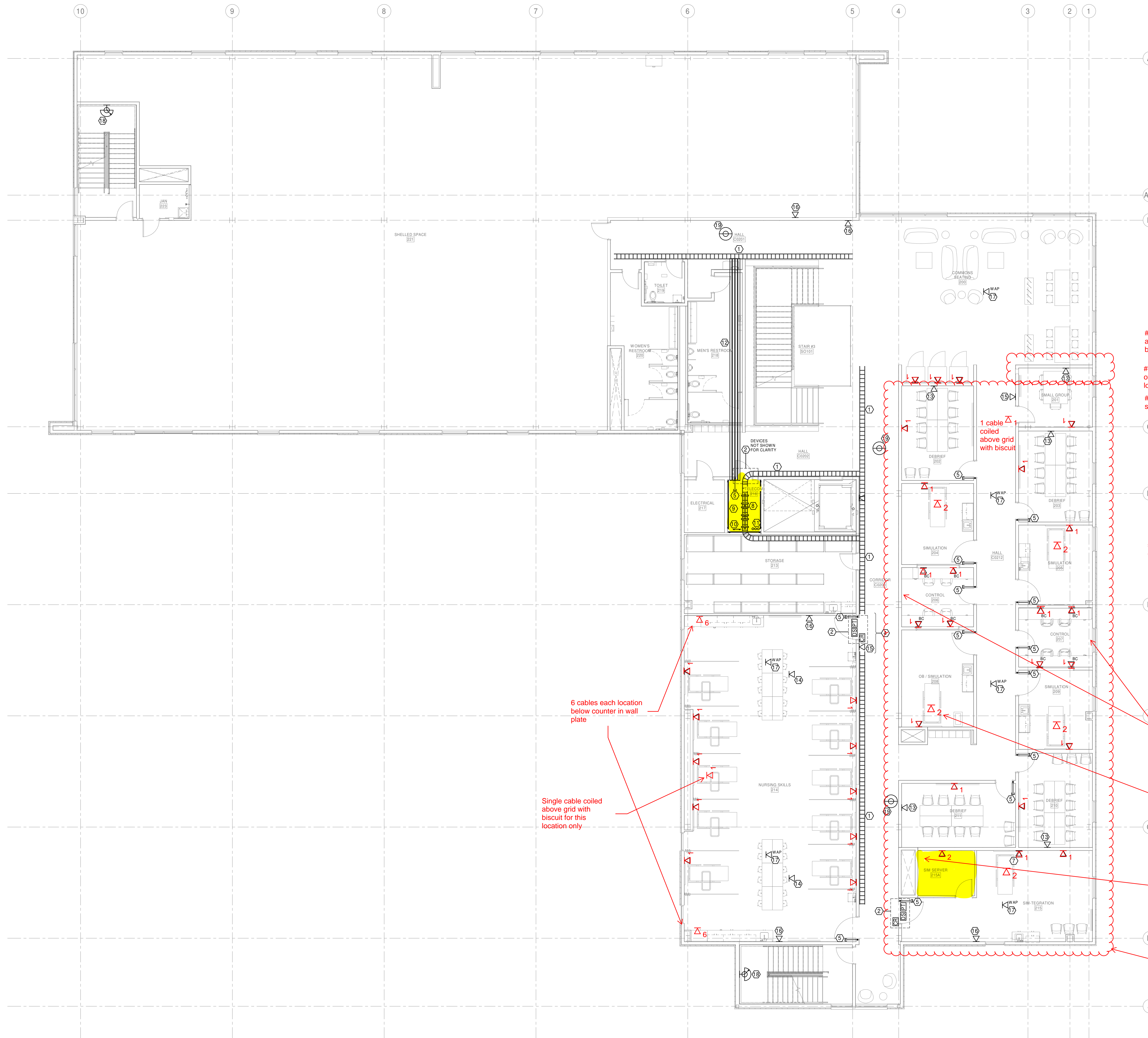
- A. COMPLY WITH LATEST ADOPTED NEC, NFPA 72 AND LATEST ADOPTED IBC/IFC.
- B. LABEL ALL COVER PLATES WITH PATCH PANEL IDENTIFICATION NUMBER ON FACE OF PLATE, SEE SPECIFICATIONS FOR ADDITIONAL INFORMATION.
- C. COORDINATE WALL MOUNTED DEVICE LOCATIONS WITH ARCHITECTURAL ELEVATIONS PRIOR TO ROUGH-IN.
- D. SEAL ALL PENETRATIONS OF RATED WALLS PER SPECIFICATIONS. SEE ARCHITECTURAL DRAWINGS FOR WALL RATINGS.
- E. ALL DATA/TELEPHONE DEVICES SHALL HAVE A #302, 2-1/8" DEEP BOX, 1-GANG MUDRING WITH 1" CONDUIT STUBBED ABOVE ACCESSIBLE CEILING SPACE, UNLESS NOTED OTHERWISE. ALL CONDUITS SHALL HAVE INSULATED THROAT BUSHINGS.
- F. PROVIDE PULLCORDS IN ALL DATA/TELEPHONE CONDUITS.
- G. **ALL DATA/TELEPHONE CABLES TO BE FURNISHED AND INSTALLED BY OWNER'S LOW VOLTAGE CONTRACTOR.**
- H. **ALL DATA/TELEPHONE CABLES TO BE PLENUM-RATED AND CATE.**
- I. **ALL DATA/TELEPHONE DEVICES AND COVER PLATES TO BE FURNISHED AND INSTALLED BY OWNER'S LOW VOLTAGE CONTRACTOR.**
- J. ALL DATA/TELEPHONE DEVICES TO HAVE 2 CAT 6 CABLES/JACKS PER DEVICE UNLESS NOTED OTHERWISE.
- K. PROVIDE AND INSTALL SOUND ISOLATION PADS FOR ALL JUNCTION BOXES LOCATED IN ACOUSTIC WALLS. REFER TO DETAILS ON ARCHITECTURAL DRAWINGS FOR REQUIREMENTS AND LOCATIONS.
- L. REFER TO DETAILS ON ARCHITECTURAL DRAWINGS FOR SEALING REQUIREMENTS FOR ACOUSTIC WALL AND FLOOR/CEILING PENETRATIONS.

FIRE ALARM SYSTEM IS A DELEGATED DESIGN SUBMITTAL BY THE FIRE ALARM CONTRACTOR.

KEYNOTES

- 1. 12"x4" WIRE BASKET CABLE TRAY, BOTTOM MOUNTED AT 11'-0" AFF. PROVIDE ALL HARDWARE FOR WALL MOUNTING AND CEILING SUPPORT TRAPEZE FOR SECTIONS NOT ON WALL.
- 2. ACCESS CONTROL EQUIPMENT, PROVIDED AND INSTALLED BY OTHERS. ELECTRICAL TO PROVIDE AND INSTALL CONDUIT AND JUNCTION BOXES. COORDINATE CONDUIT AND JUNCTION BOX LOCATIONS WITH ACCESS CONTROL INSTALLER AND DOOR HARDWARE CONTRACTOR PRIOR TO ROUGH-IN. SEE E007 FOR ADDITIONAL INFORMATION.
- 3. NOTE NOT USED.
- 4. THIS PORTION OF CABLE TRAY NOT SHOWN FOR CLARITY.
- 5. 3/4" EMPTY CONDUIT WITH INSULATED THROAT BUSHINGS FROM CENTER HINGE TO ABOVE ACCESSIBLE CEILING SPACE FOR ACCESS CONTROL WIRING.
- 6. NOTE NOT USED.
- 7. TV BOX AT +72" AFF. SEE E302 FOR ADDITIONAL INFORMATION. PROVIDE 1" CONDUIT WITH PULLCORD AND INSULATED THROAT BUSHINGS TO ABOVE ACCESSIBLE CEILING SPACE.
- 8. DATA RACKS AND EQUIPMENT, PROVIDED AND INSTALLED BY OWNER'S LOW VOLTAGE CONTRACTOR.
- 9. PROVIDE 3/4" x 3/4" FIRE-RATED PLYWOOD TELECOM BACKBOARD ON ALL WALLS. SEE SPECIFICATIONS FOR ADDITIONAL INFORMATION.
- 10. TELECOMMUNICATIONS GROUND BAR. SEE SPECIFICATIONS FOR ADDITIONAL INFORMATION. PROVIDE #60 GROUND IN 1/2"C. TO MAIN SERVICE GROUND BAR.
- 11. (3) 4" CONDUIT SLEEVES WITH INSULATED THROAT BUSHINGS THRU FLOOR.
- 12. (4) 4" CONDUITS FOR COMMUNICATION CABLING WITH PULLCORD AND INSULATED THROAT BUSHINGS. MOUNTED AT 11'-0" AFF.
- 13. TV BOX AT +72" AFF AND JUNCTION BOX AT +18" AFF BELOW WITH 1" CONDUIT CONNECTING BOTH. SEE E302 FOR ADDITIONAL INFORMATION. PROVIDE 1" CONDUIT WITH PULLCORD AND INSULATED THROAT BUSHINGS TO ABOVE ACCESSIBLE CEILING SPACE.
- 14. CEILING PROJECTOR LOCATION, EQUIPMENT AND CABLING BY OTHERS LOCATED ABOVE CEILING.
- 15. ROOM SCHEDULER AT +42" AFF. PROVIDE 2-GANG JUNCTION BOX WITH 1/2" EMPTY CONDUIT WITH INSULATED THROAT BUSHINGS TO ABOVE ACCESSIBLE CEILING SPACE.
- 16. PoE CLOCK AT +96" AFF. EQUIPMENT AND CABLING BY OTHERS.
- 17. WIRELESS ACCESS POINT, ABOVE CEILING, EQUIPMENT AND CABLING BY OTHERS.
- 18. INTERIOR CAMERA, PROVIDED AND INSTALLED BY OTHERS. PROVIDE JUNCTION BOX AND 1/2"C. TO ABOVE ACCESSIBLE CEILING SPACE. COORDINATE LOCATION, HEIGHT AND ROUGH-IN REQUIREMENTS WITH OWNER PRIOR TO ROUGH-IN.
- 19. CEILING MOUNTED INTERIOR CAMERA, PROVIDED AND INSTALLED BY OTHERS. COORDINATE LOCATION AND ROUGH-IN REQUIREMENTS WITH OWNER PRIOR TO ROUGH-IN.

Note J: All locations to have a single cable unless otherwise noted



#5 1- Cable coiled above grid with biscuit

#7 2- cables at head of each SIM bed 5 locations

#8 See CWI cabling specs document

#13 2- cables each debris room display and pc

#14 1- Cable coiled above grid terminated with biscuit

#15 1- Cable coiled above grid w/ r145 jack - Long enough coil to reach floor.

#16 1- Cable for POE clock - wallplate

#17 1- Cable for WAP coiled above grid with biscuit

#18 1- Cable in wallplate

#19 1- Cable for Security Camera - Coiled above grid with biscuit

1 cable for each control room for audio controls above grid RM# 206 207

Each bed in SIM lab will need 2 cables coiled above grid and 1 cable in 16 AFF Rm 204 205 208 209 215

SIM Server Room - 2 post rack w/ vertical mgmt and pathway to above grid. 6 Copper cables back to 2nd floor telco.

Notes #5, 15, 16, 17, 19 pull back to telco RM 216. all other cables go back to SIM Server Rack

6 cables each location below counter in wall plate

Single cable coiled above grid with biscuit for this location only



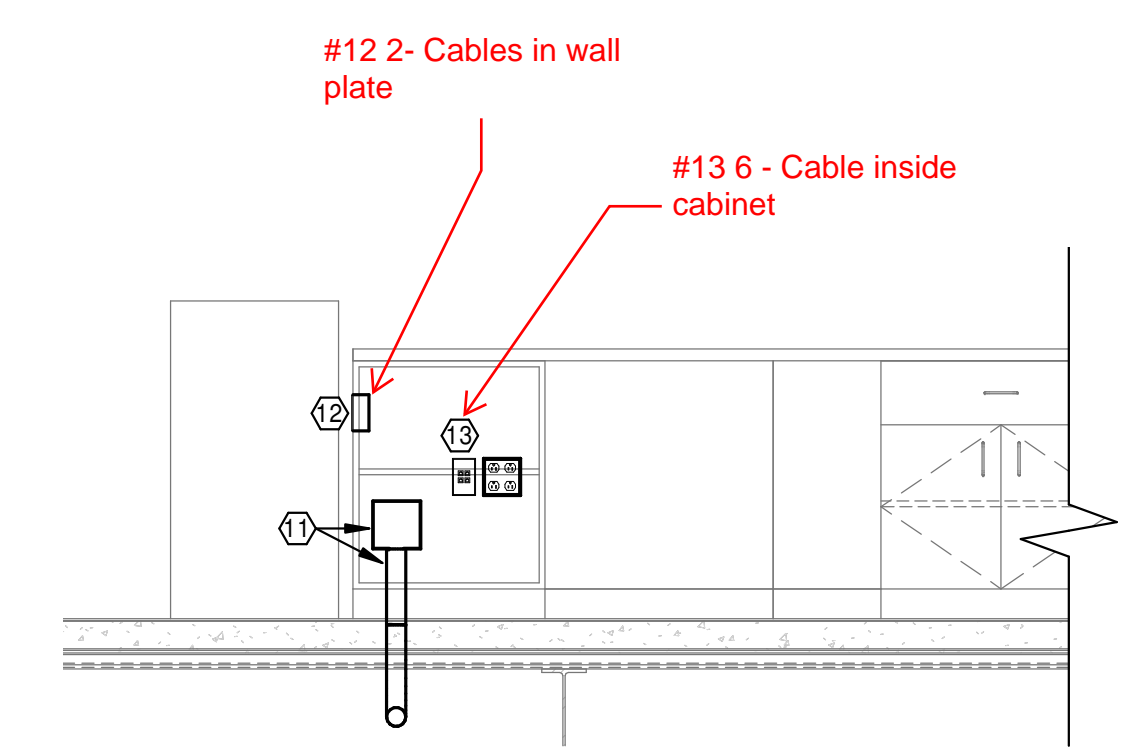
GENERAL NOTES - SYSTEMS

- A. COMPLY WITH LATEST ADOPTED NEC, NFPA 72 AND LATEST ADOPTED IBC/IFC.
- B. LABEL ALL COVER PLATES WITH PATCH PANEL IDENTIFICATION NUMBER ON FACE OF PLATE, SEE SPECIFICATIONS FOR ADDITIONAL INFORMATION.
- C. COORDINATE WALL MOUNTED DEVICE LOCATIONS WITH ARCHITECTURAL ELEVATIONS PRIOR TO ROUGH-IN.
- D. SEAL ALL PENETRATIONS OF RATED WALLS PER SPECIFICATIONS. SEE ARCHITECTURAL DRAWINGS FOR WALL RATINGS.
- E. ALL DATA/TELEPHONE DEVICES SHALL HAVE A 4" SQ. 2-1/8" DEEP BOX, 1-GANG MUDRING WITH 1" CONDUIT STUBBED ABOVE ACCESSIBLE CEILING SPACE, UNLESS NOTED OTHERWISE. ALL CONDUITS SHALL HAVE INSULATED THROAT BUSHINGS.
- F. PROVIDE PULLCORDS IN ALL DATA/TELEPHONE CONDUITS.
- G. **ALL DATA/TELEPHONE CABLES TO BE FURNISHED AND INSTALLED BY OWNER'S LOW VOLTAGE CONTRACTOR.**
- H. **ALL DATA/TELEPHONE CABLES TO BE PLENUM-RATED AND CATE.**
- I. **ALL DATA/TELEPHONE DEVICES AND COVER PLATES TO BE FURNISHED AND INSTALLED BY OWNER'S LOW VOLTAGE CONTRACTOR.**
- J. **ALL DATA/TELEPHONE DEVICES TO HAVE 2 CAT 6 CABLES/JACKS PER DEVICE UNLESS NOTED OTHERWISE.**
- K. PROVIDE AND INSTALL SOUND ISOLATION PADS FOR ALL JUNCTION BOXES LOCATED IN ACOUSTIC WALLS. REFER TO DETAILS ON ARCHITECTURAL DRAWINGS FOR REQUIREMENTS AND LOCATIONS. REFER TO DETAILS ON ARCHITECTURAL DRAWINGS FOR SEALING REQUIREMENTS FOR ACOUSTIC WALL AND FLOOR/CEILING PENETRATIONS.

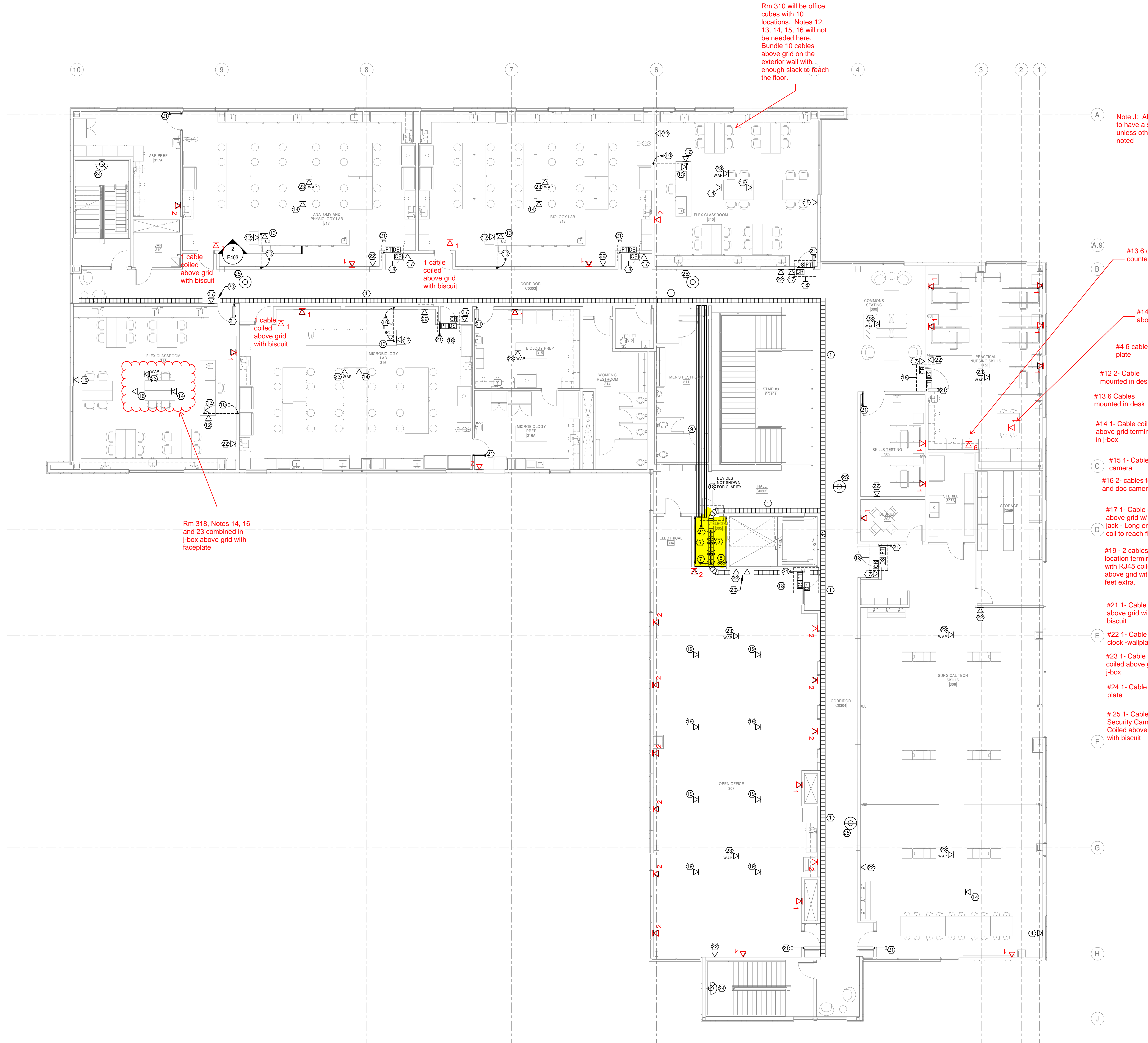
FIRE ALARM SYSTEM IS A DELEGATED DESIGN SUBMITTAL BY THE FIRE ALARM CONTRACTOR.

KEYNOTES

- 1. 12"x4" WIRE BASKET CABLE TRAY, BOTTOM MOUNTED AT 11'-0" AFF. PROVIDE ALL HARDWARE FOR WALL MOUNTING AND CEILING SUPPORT TRAPEZE FOR SECTIONS NOT ON WALL.
- 2. NOTE NOT USED.
- 3. NOTE NOT USED.
- 4. TV BOX AT 172" AFF. SEE E303 FOR ADDITIONAL INFORMATION. PROVIDE 1" CONDUIT WITH PULLCORD AND INSULATED THROAT BUSHINGS TO ABOVE ACCESSIBLE CEILING SPACE.
- 5. DATA RACKS AND EQUIPMENT PROVIDED AND INSTALLED BY OWNER'S LOW VOLTAGE CONTRACTOR.
- 6. PROVIDE 8H x 3/4" FIRE-RATED PLYWOOD TELECOM BACKBOARD ON ALL WALLS. SEE SPECIFICATIONS FOR ADDITIONAL INFORMATION.
- 7. TELECOMMUNICATIONS GROUND BAR. SEE SPECIFICATIONS FOR ADDITIONAL INFORMATION. PROVIDE #6CU GROUND IN 1/2" C. TO MAIN SERVICE GROUND BAR.
- 8. (3) 4" CONDUIT SLEEVES WITH INSULATED THROAT BUSHINGS THRU FLOOR.
- 9. (4) 4" CONDUITS FOR COMMUNICATION CABLEING WITH PULLCORD AND INSULATED THROAT BUSHINGS. MOUNTED AT 11'-6" AFF.
- 10. 2" C. STUBBED ABOVE ACCESSIBLE CEILING WITH PULLCORD AND INSULATED THROAT BUSHINGS.
- 11. 6" SQ. x 3"D. JUNCTION BOX WITH 2" CONDUIT TO ABOVE ACCESSIBLE CEILING. JUNCTION BOX MOUNTED IN CASEWORK FOR DATA CABLEING. SEE DETAIL 2.
- 12. DATA JACK, MOUNTED HORIZONTALLY IN SIDE OF CASEWORK AT +26" AFF.
- 13. DATA JACK, MOUNTED IN LAB TEACHER'S DESK. SEE DETAIL 2.
- 14. CEILING PROJECTOR LOCATION, EQUIPMENT AND CABLEING BY OTHERS LOCATED ABOVE CEILING.
- 15. WALL MOUNTED CAMERA AT 5'-0" AFF. PROVIDE JUNCTION BOX AND 1/2" C. TO ABOVE ACCESSIBLE CEILING SPACE. COORDINATE LOCATION, HEIGHT AND ROUGH-IN REQUIREMENTS WITH OWNER PRIOR TO ROUGH-IN.
- 16. CEILING MOUNTED MICROPHONE. EQUIPMENT AND CABLEING BY OTHERS LOCATED ABOVE CEILING.
- 17. ROOM SCHEDULER AT +42" AFF. PROVIDE 2-GANG JUNCTION BOX WITH 1/2" EMPTY CONDUIT WITH INSULATED THROAT BUSHINGS TO ABOVE ACCESSIBLE CEILING SPACE.
- 18. ACCESS CONTROL EQUIPMENT, PROVIDED AND INSTALLED BY OTHERS. ELECTRICAL TO PROVIDE AND INSTALL CONDUIT AND JUNCTION BOXES. COORDINATE CONDUIT AND JUNCTION BOX LOCATIONS WITH ACCESS CONTROL INSTALLER AND DOOR HARDWARE CONTRACTOR PRIOR TO ROUGH-IN. SEE E007 FOR ADDITIONAL INFORMATION.
- 19. FURNITURE DATA CONNECTION ABOVE CEILING. COORDINATE CONNECTION LOCATIONS WITH FURNITURE VENDOR.
- 20. THIS PORTION OF CABLE TRAY NOT SHOWN FOR CLARITY.
- 21. 3/4" EMPTY CONDUIT WITH INSULATED THROAT BUSHINGS FROM CENTER HINGE TO ABOVE ACCESSIBLE CEILING SPACE FOR ACCESS CONTROL WIRING.
- 22. PACE CLOCK AT +88" AFF. EQUIPMENT AND CABLEING BY OTHERS.
- 23. WIRELESS ACCESS POINT, ABOVE CEILING, EQUIPMENT AND CABLEING BY OTHERS.
- 24. INTERIOR CAMERA, PROVIDED AND INSTALLED BY OTHERS. PROVIDE JUNCTION BOX AND 1/2" C. TO ABOVE ACCESSIBLE CEILING SPACE. COORDINATE LOCATION, HEIGHT AND ROUGH-IN REQUIREMENTS WITH OWNER PRIOR TO ROUGH-IN.
- 25. CEILING-MOUNTED INTERIOR CAMERA. PROVIDED AND INSTALLED BY OTHERS. COORDINATE LOCATION AND ROUGH-IN REQUIREMENTS WITH OWNER PRIOR TO ROUGH-IN.



LAB TEACHER'S DESK SECTION
1/2" = 1'-0" TYPICAL



Rm 310 will be office cubes with 10 locations. Notes 12, 13, 14, 15, 16 will not be needed here. Bundle 10 cables above grid on the exterior wall with enough slack to reach the floor.

Note J: All locations to have a single cable unless otherwise noted

1 cable coiled above grid with biscuit

1 cable coiled above grid with biscuit

1 cable coiled above grid with biscuit

Rm 318, Notes 14, 16 and 23 combined in j-box above grid with faceplate

#13 6 cables under counter in wall plate

#14 1 cable projector above grid w/ biscuit

#4 6 cables in wall plate

#12 2- Cable mounted in desk

#13 6 Cables mounted in desk

#14 1- Cable coiled above grid terminated in j-box

#15 1- Cable for camera

#16 2- cables for Mic and doc camera j-box

#17 1- Cable coiled above grid w/ rj45 jack - Long enough coil to reach floor.

#19 - 2 cables per location terminated with RJ45 coiled above grid with 25 feet extra.

#21 1- Cable coiled above grid with biscuit

#22 1- Cable for POE clock - wallplate

#23 1- Cable for WAP coiled above grid in j-box

#24 1- Cable in wall plate

#25 1- Cable for Security Camera - Coiled above grid with biscuit

#12 2- Cables in wall plate

#13 6 - Cable inside cabinet

